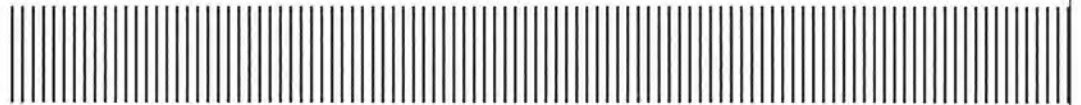
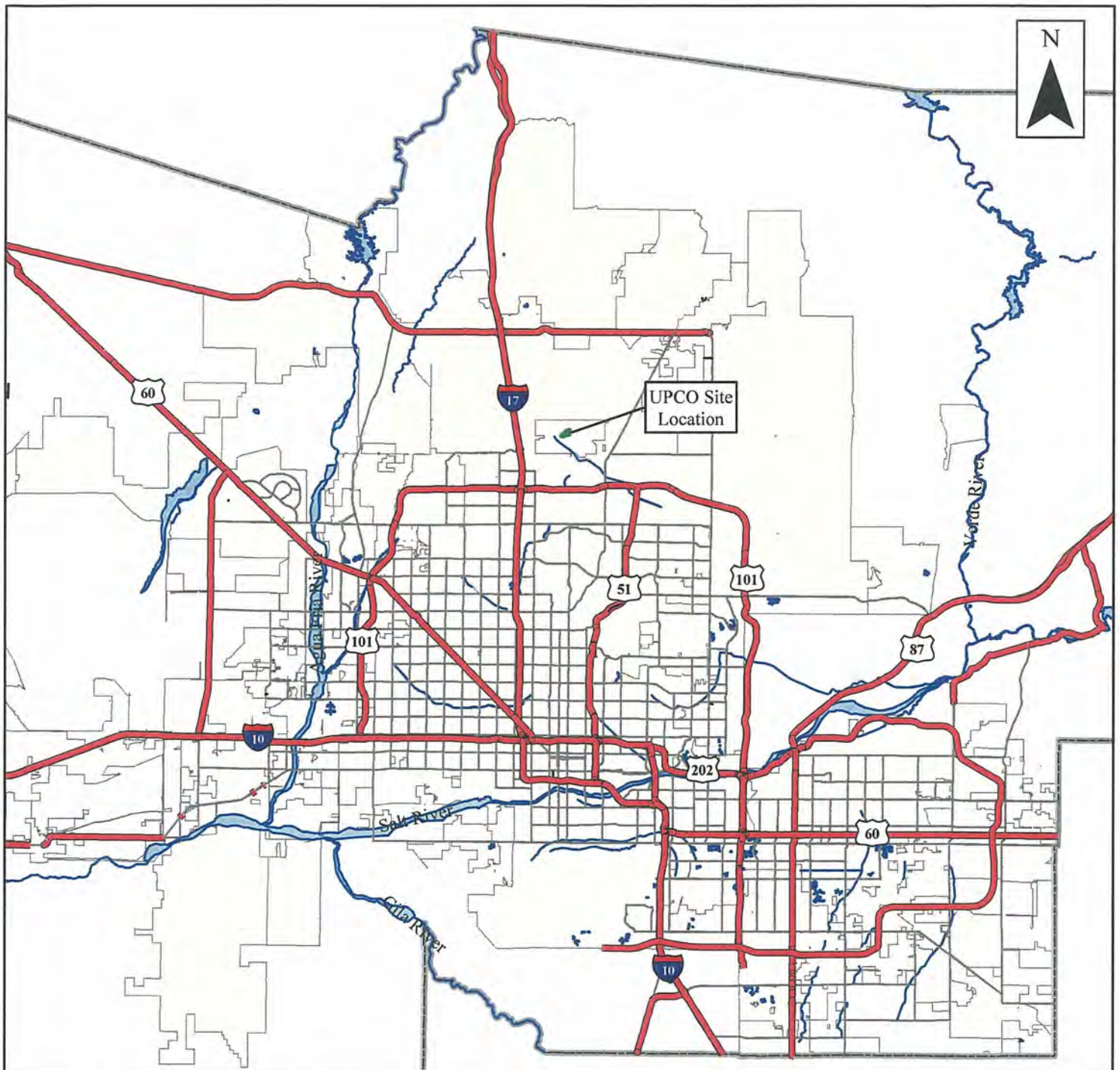


**Universal Propulsion Company**  
2011 Annual Monitoring Report

---

## **Figures**





### Legend

- |                    |                   |
|--------------------|-------------------|
| Highways, Freeways | County Boundaries |
| Primary Roads      | Lakes             |
| Rivers             | City Boundaries   |
| Site Location      |                   |

0 2.5 5 10 15  
  
 Miles

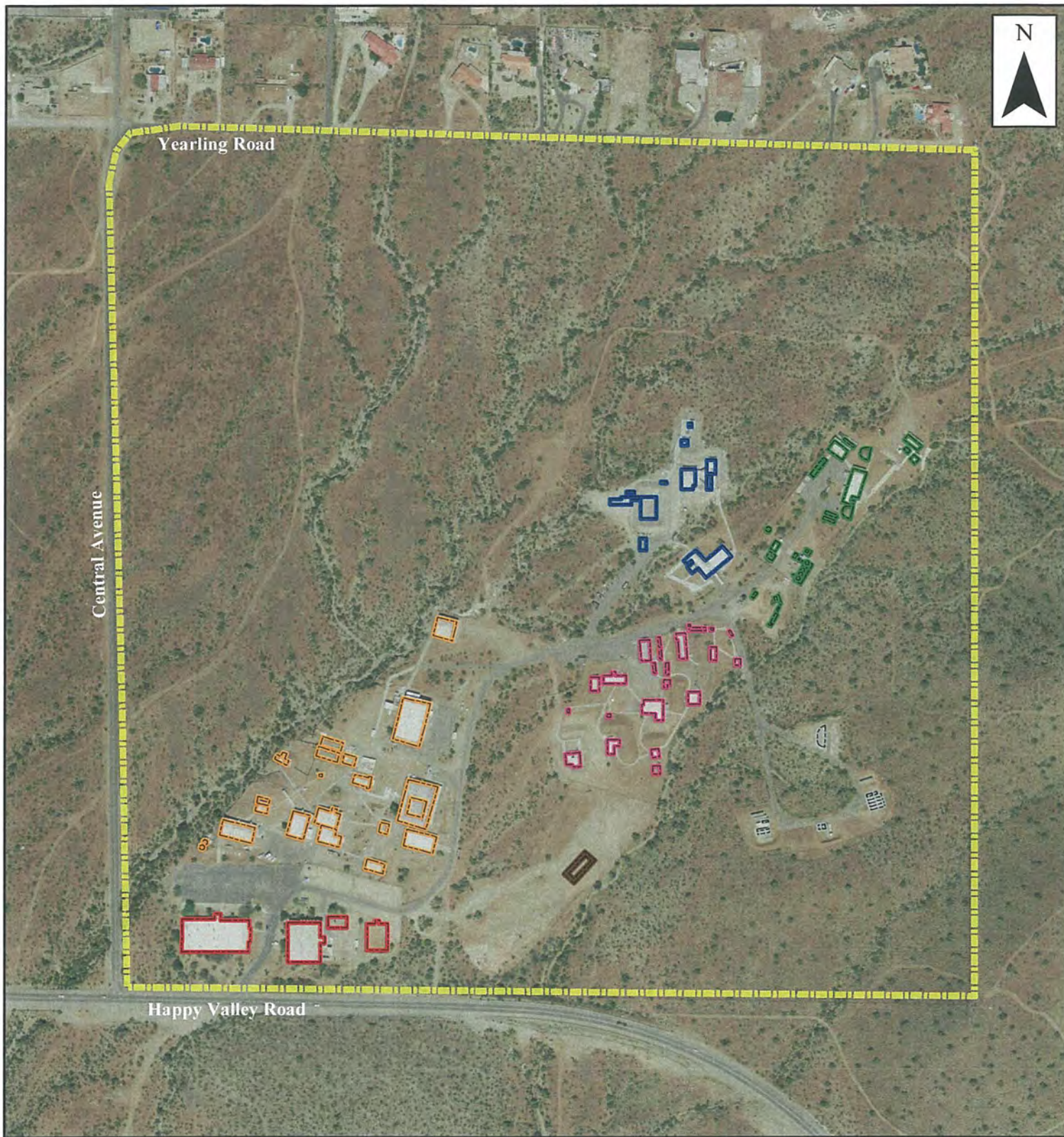


Site Location Map  
 2011 Annual Monitoring Report









February 2012

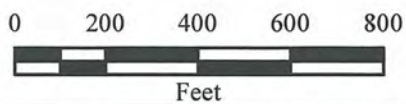
**Figure 1**





## Legend

	A-Complex		E-Complex
	B-Complex		F-Complex
	C-Complex		Open Burn Unit
	D-Complex		Lease Property Boundary

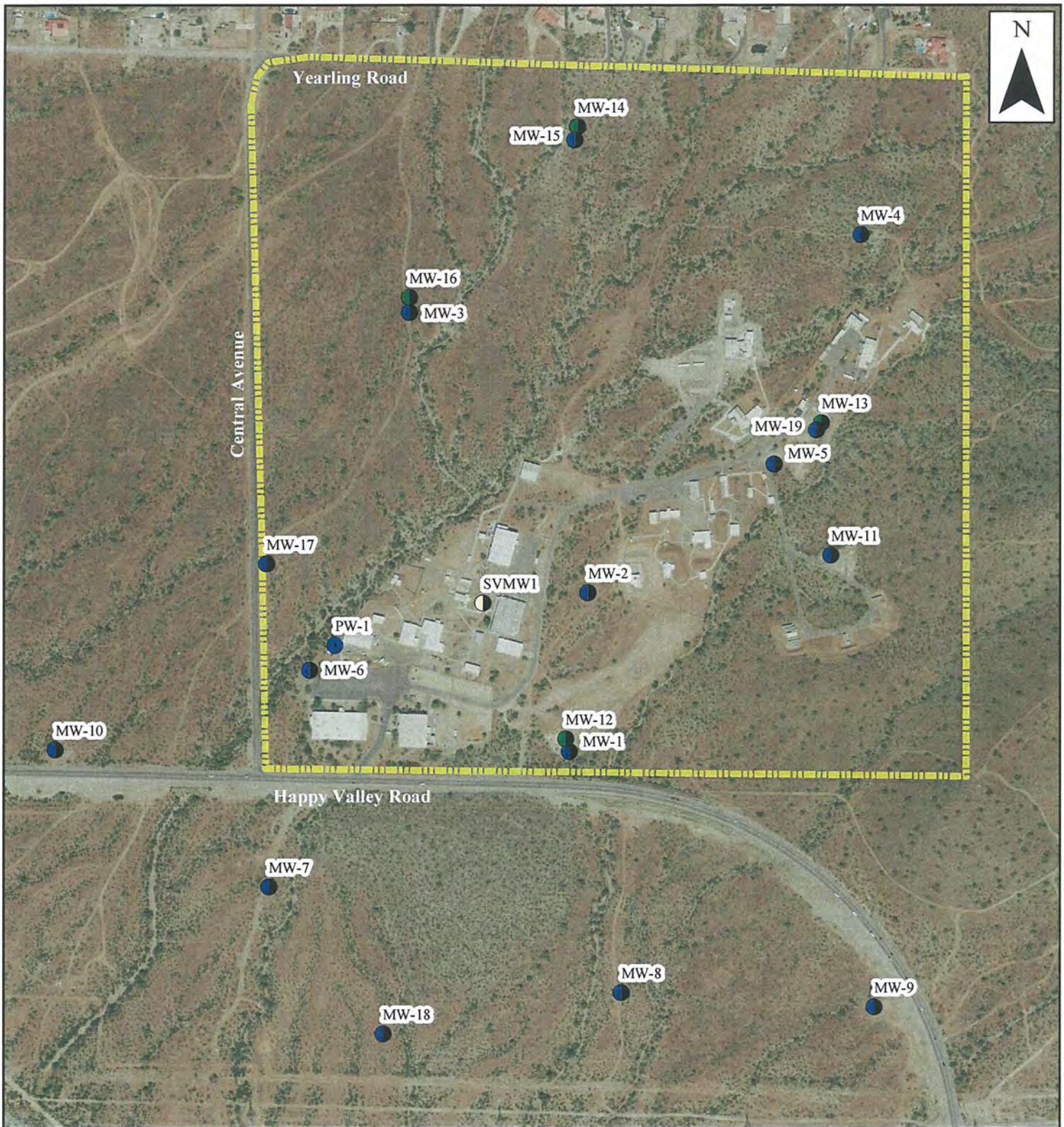


Site Facilities Map  
2011 Annual Monitoring Report

February 2012

Figure 2

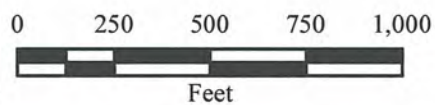




## Legend

- Deep Monitor Well
- Monitor Well
- Former Production Well
- Soil Vapor Monitor Well
- Lease Property Boundary

Notes:  
 SVMW-1 is a soil vapor monitoring well installed above water level.  
 PW-1 was converted to a monitor well on September 2, 2011.

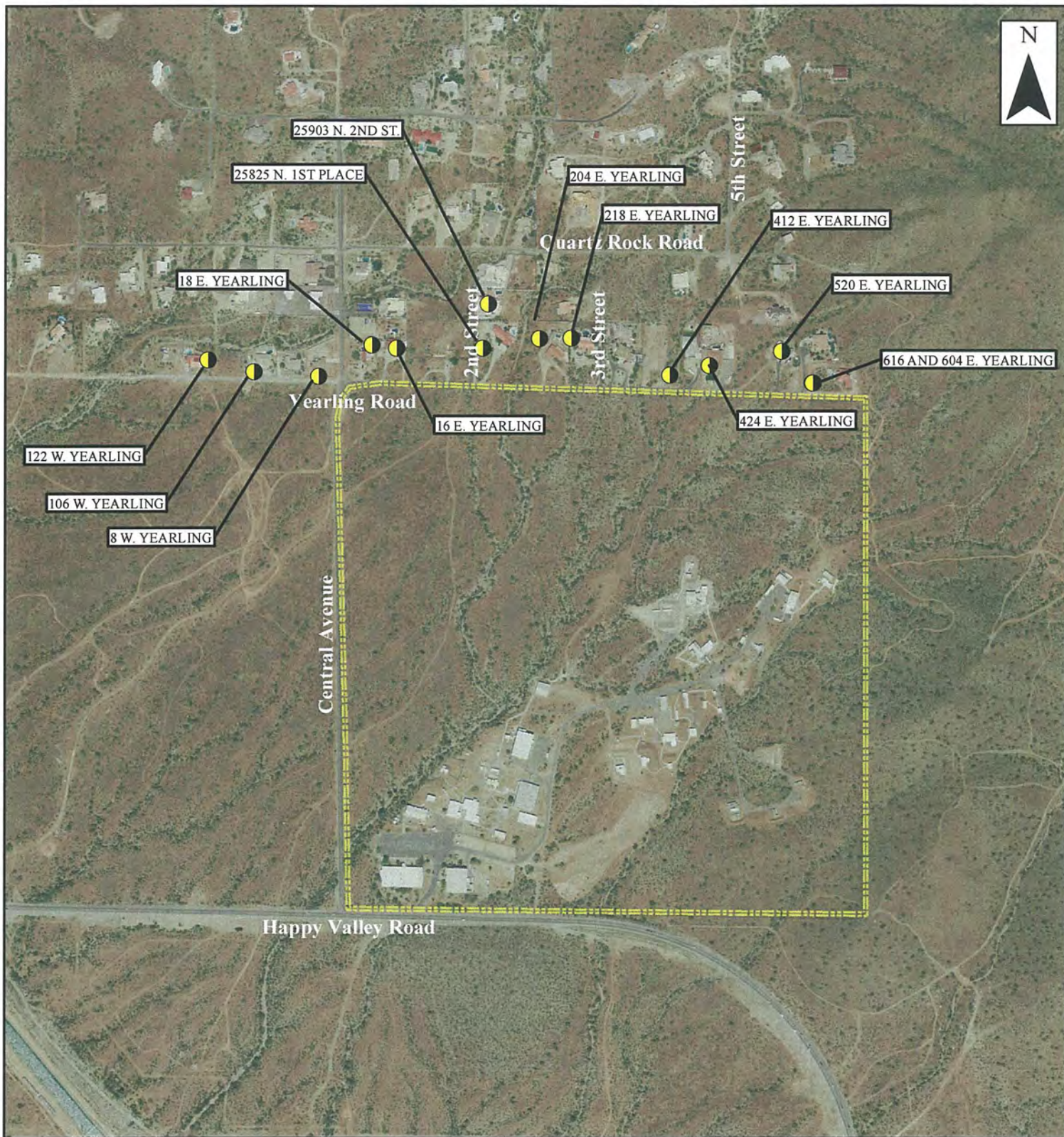


UPCO Monitor Wells  
 2011 Annual Monitoring Report



February 2012


Figure 3





## Legend

-  Private Domestic Wells
-  Lease Property Boundary

0 250 500 750 1,000  
  
 Feet

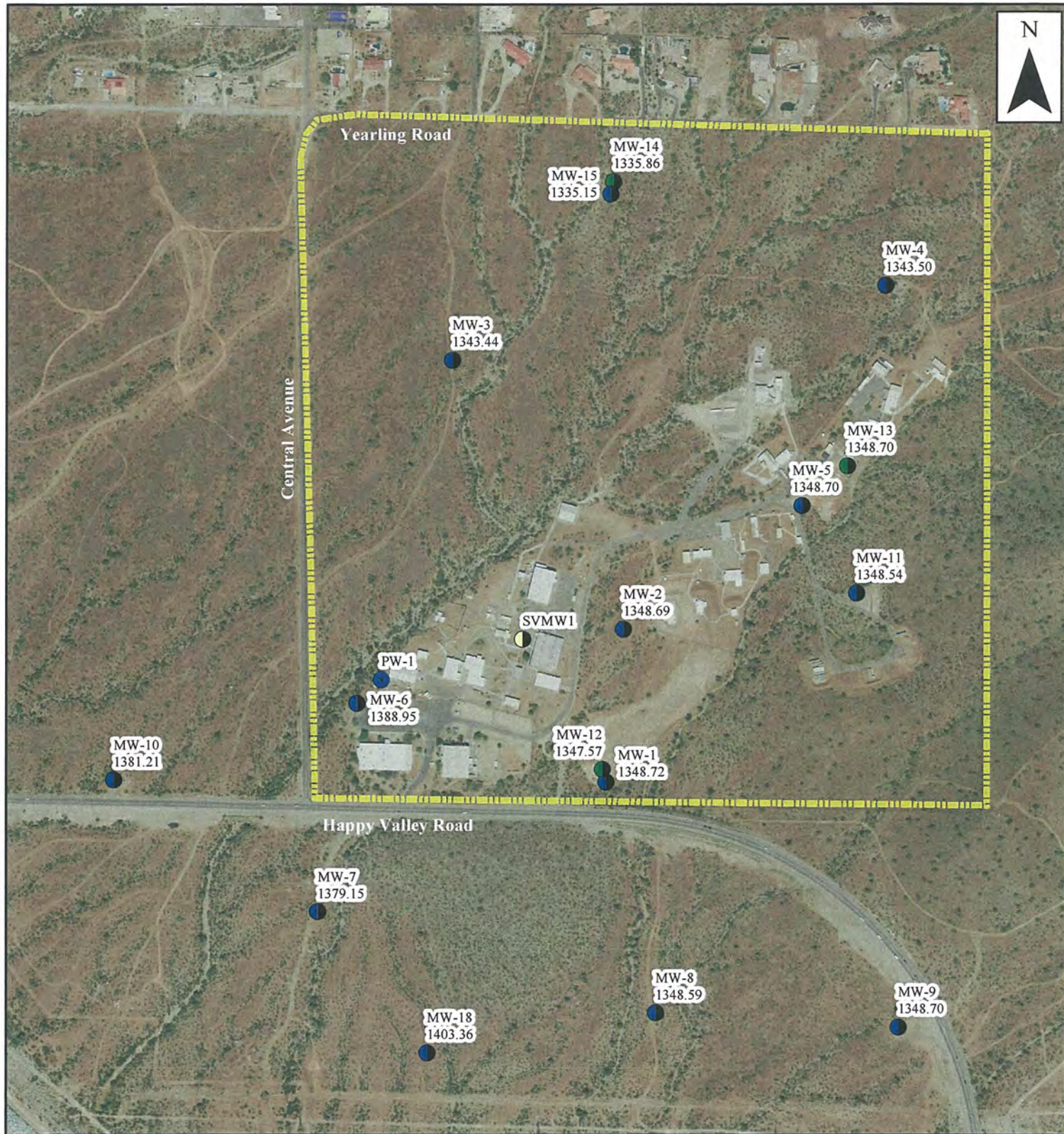


Private Wells  
 2011 Annual Monitoring Report

February 2012

Figure 4





## Legend

- Deep Monitor Well
- Monitor Well
- Former Production Well
- Soil Vapor Monitor Well



Lease Property Boundary

MW-1 / Well ID  
1348.72 \ Groundwater Elevation  
(ft amsl)

0 250 500 750 1,000



Feet

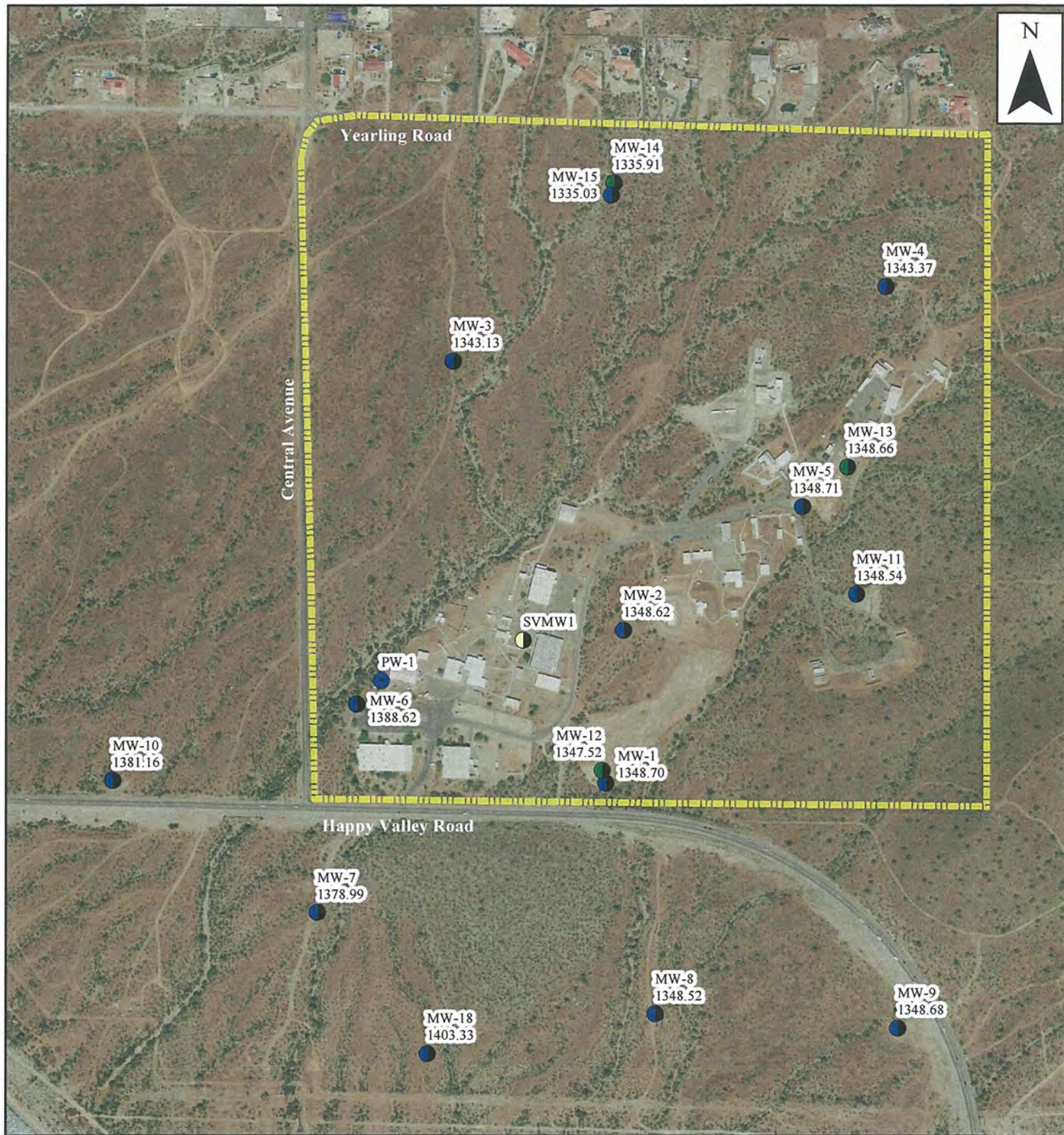


Groundwater Elevation  
February 23, 2011  
2011 Annual Monitoring Report

February 2012

Figure 5

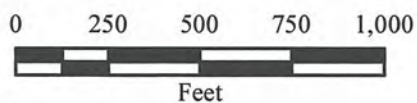




## Legend

- Deep Monitor Well
- Monitor Well
- Former Production Well
- Soil Vapor Monitor Well
- Lease Property Boundary

MW-1 / Well ID  
1348.70 / Groundwater Elevation (ft amsl)

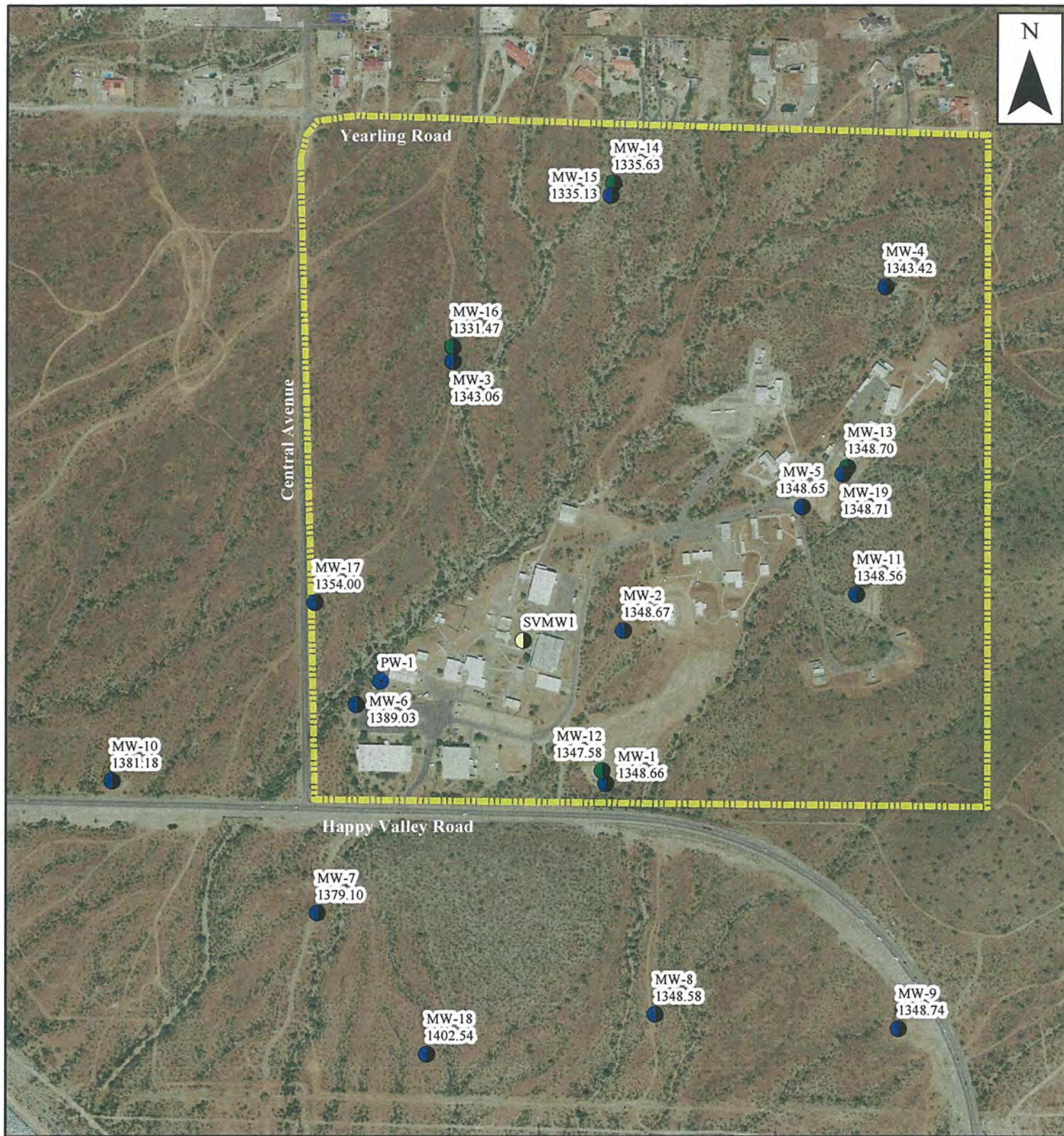


Groundwater Elevation  
March 22, 2011  
2011 Annual Monitoring Report

February 2012

Figure 6



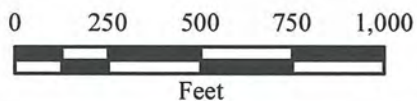


## Legend

- Deep Monitor Well
- Monitor Well
- Former Production Well
- Soil Vapor Monitor Well

MW-1 / Well ID  
1348.66 / Groundwater Elevation (ft amsl)

Lease Property Boundary

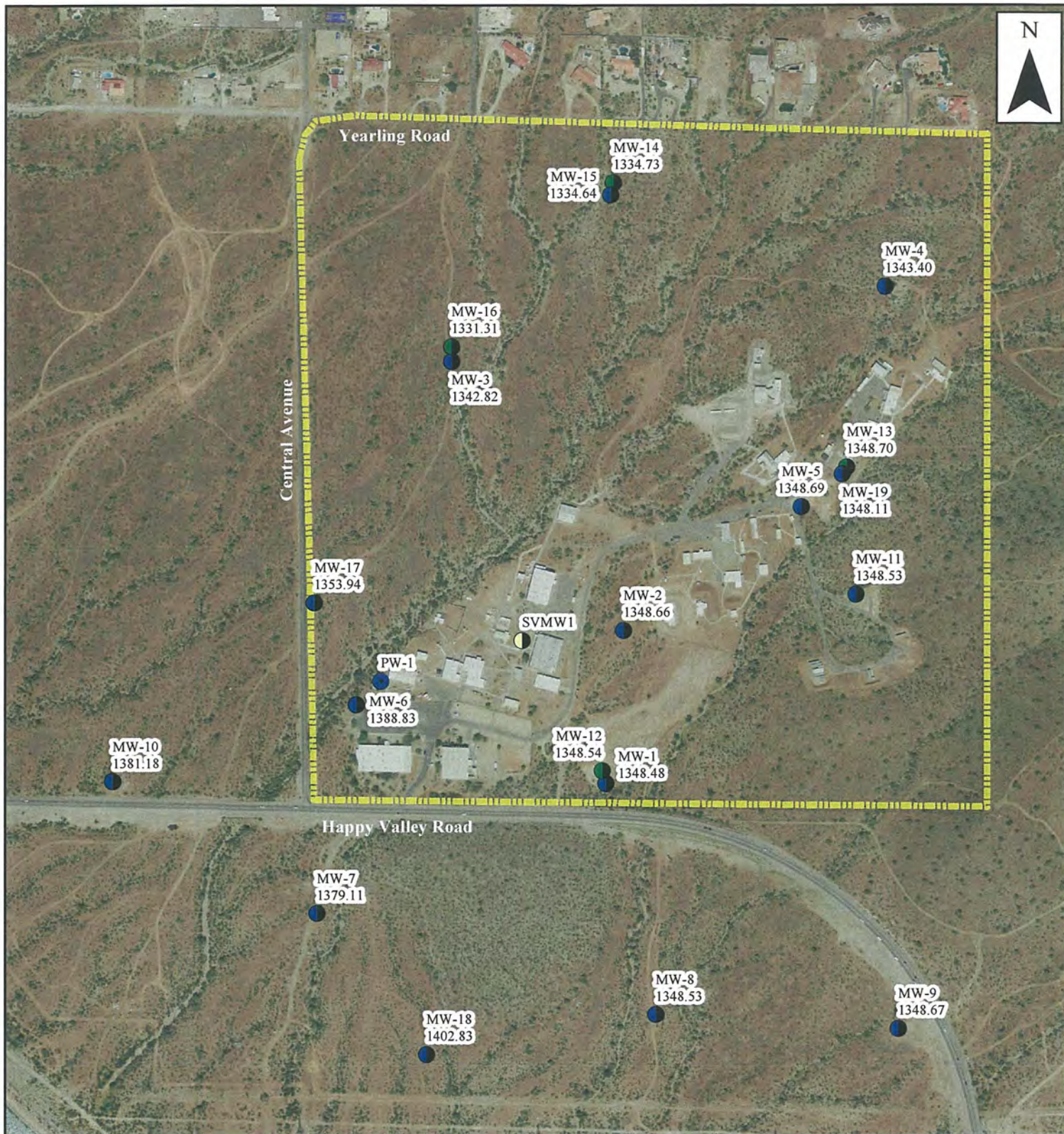


Groundwater Elevation  
April 25-26, 2011  
2011 Annual Monitoring Report

February 2012

Figure 7





## Legend

- Deep Monitor Well
- Monitor Well
- Former Production Well
- Soil Vapor Monitor Well

MW-1 / Well ID  
1348.48 / Groundwater Elevation (ft amsl)

Lease Property Boundary

0 250 500 750 1,000

Feet

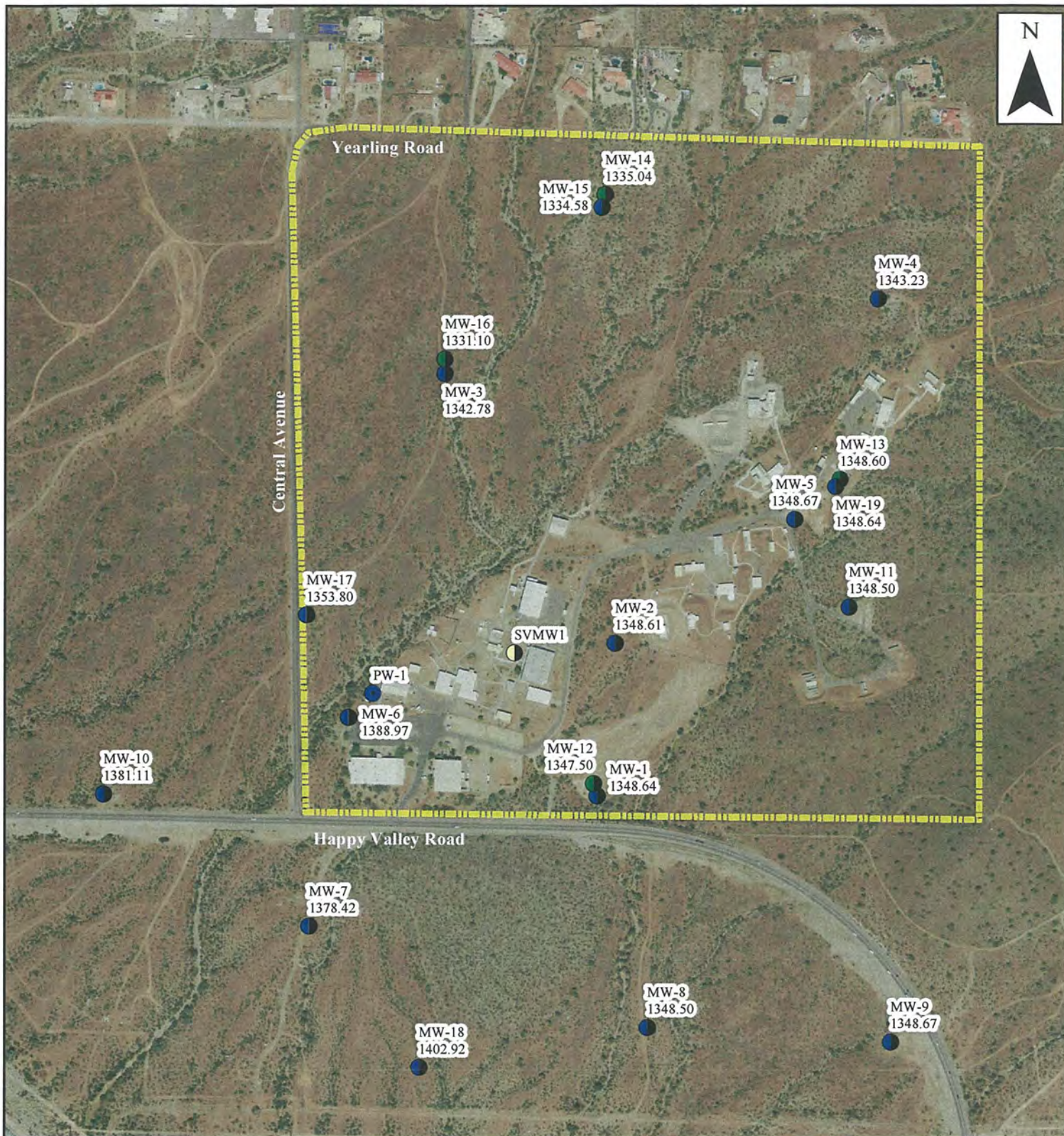


Groundwater Elevation  
May 27, 2011  
2011 Annual Monitoring Report

February 2012

Figure 8



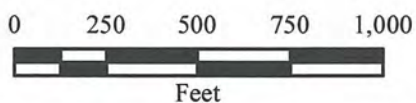


## Legend

- Deep Monitor Well
- Monitor Well
- Former Production Well
- Soil Vapor Monitor Well

MW-1 / Well ID  
1348.64 / Groundwater Elevation (ft amsl)

Lease Property Boundary

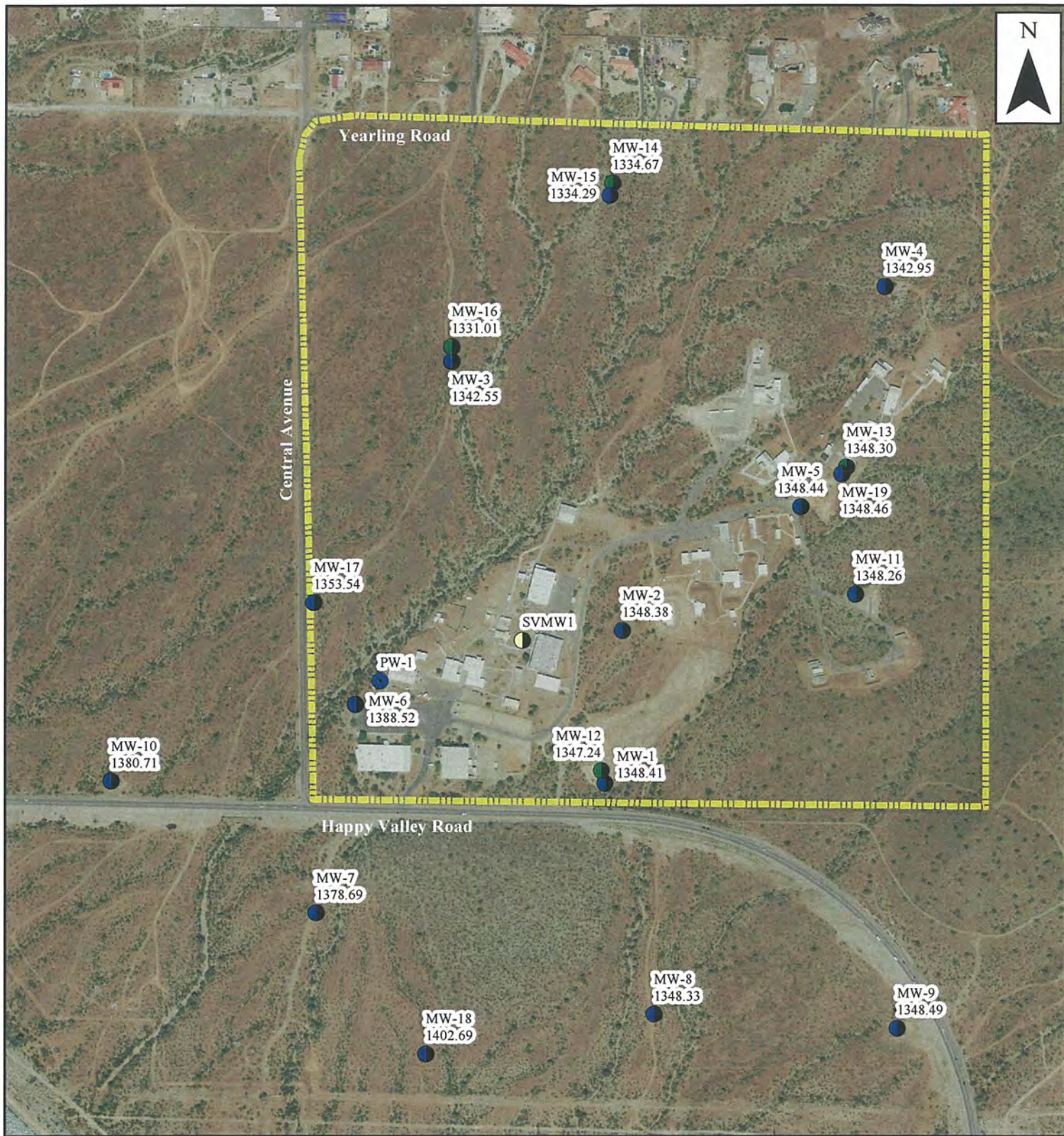


Groundwater Elevation  
June 30, 2011  
2011 Annual Monitoring Report

February 2012

Figure 9

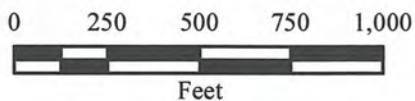




## Legend

- Deep Monitor Well
- Monitor Well
- Former Production Well
- Soil Vapor Monitor Well
- ▭ Lease Property Boundary

MW-1 / Well ID  
1348.41 / Groundwater Elevation (ft amsl)

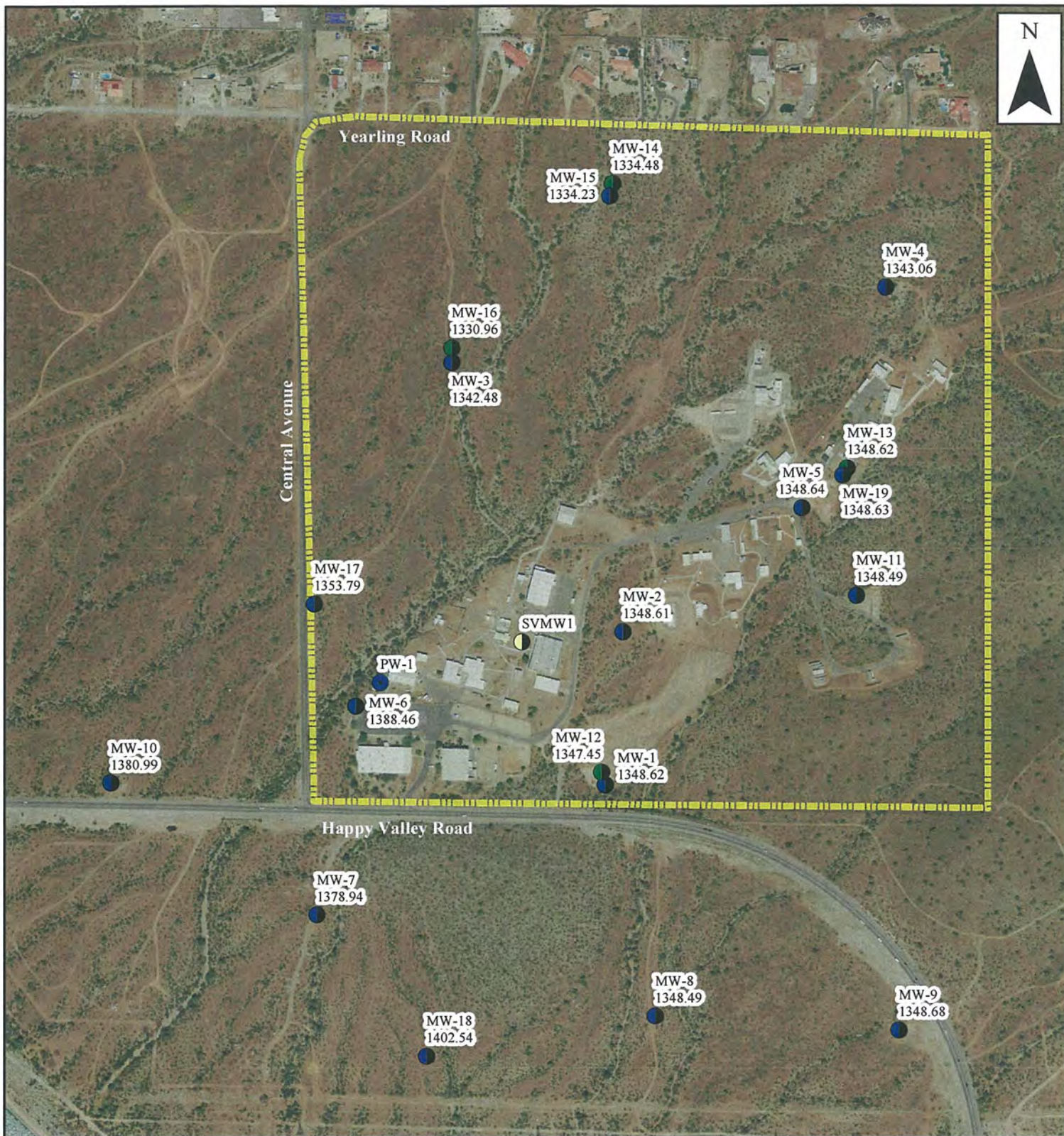


Groundwater Elevation  
July 25, 2011  
2011 Annual Monitoring Report

February 2012

Figure 10





## Legend

- Deep Monitor Well
- Monitor Well
- Former Production Well
- Soil Vapor Monitor Well



Lease Property Boundary

MW-1 / Well ID  
1348.62 / Groundwater Elevation (ft amsl)

0 250 500 750 1,000



Feet

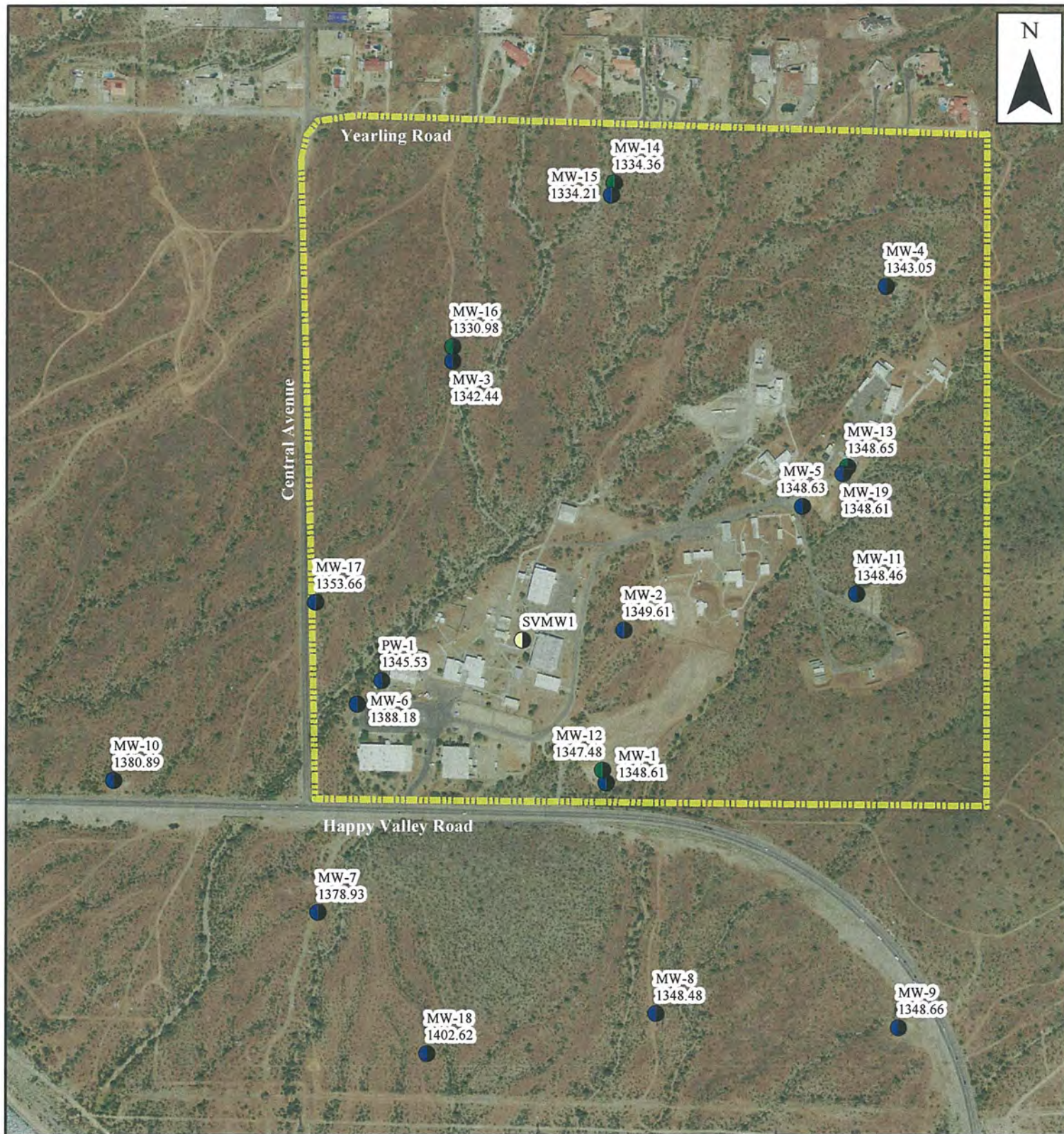


Groundwater Elevation  
September 2, 2011  
2011 Annual Monitoring Report

February 2012

Figure 11

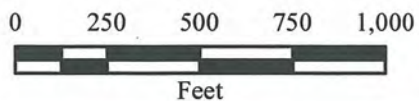




## Legend

- Deep Monitor Well
- Monitor Well
- Soil Vapor Monitor Well
- Lease Property Boundary

MW-1 / Well ID  
1348.61 / Groundwater Elevation (ft amsl)

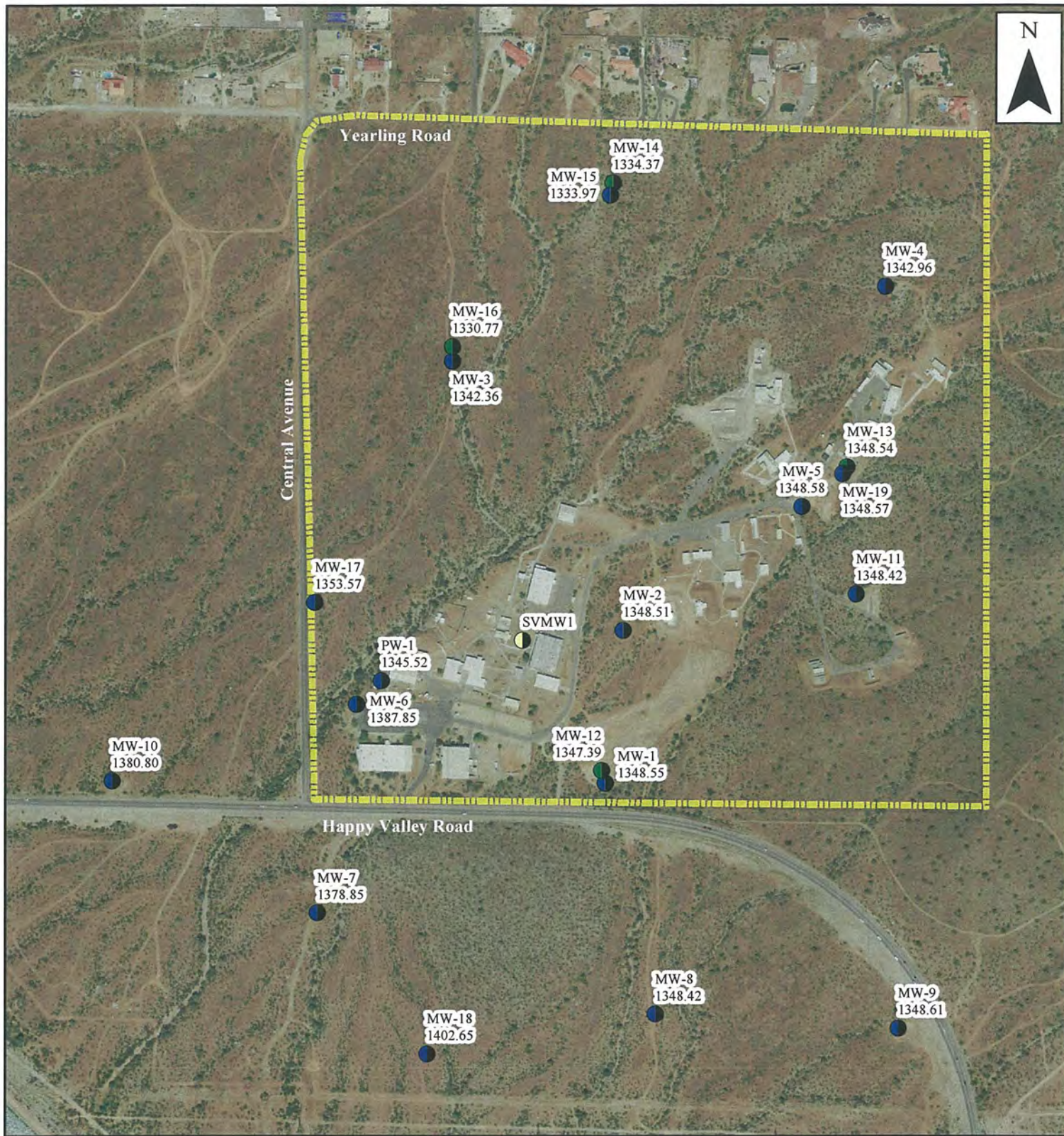


Groundwater Elevation  
September 27, 2011  
2011 Annual Monitoring Report

February 2012

Figure 12

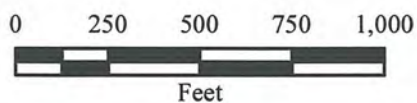




## Legend

- Deep Monitor Well
- Monitor Well
- Soil Vapor Monitor Well
- Lease Property Boundary

MW-1 / Well ID  
1348.55 / Groundwater Elevation (ft amsl)

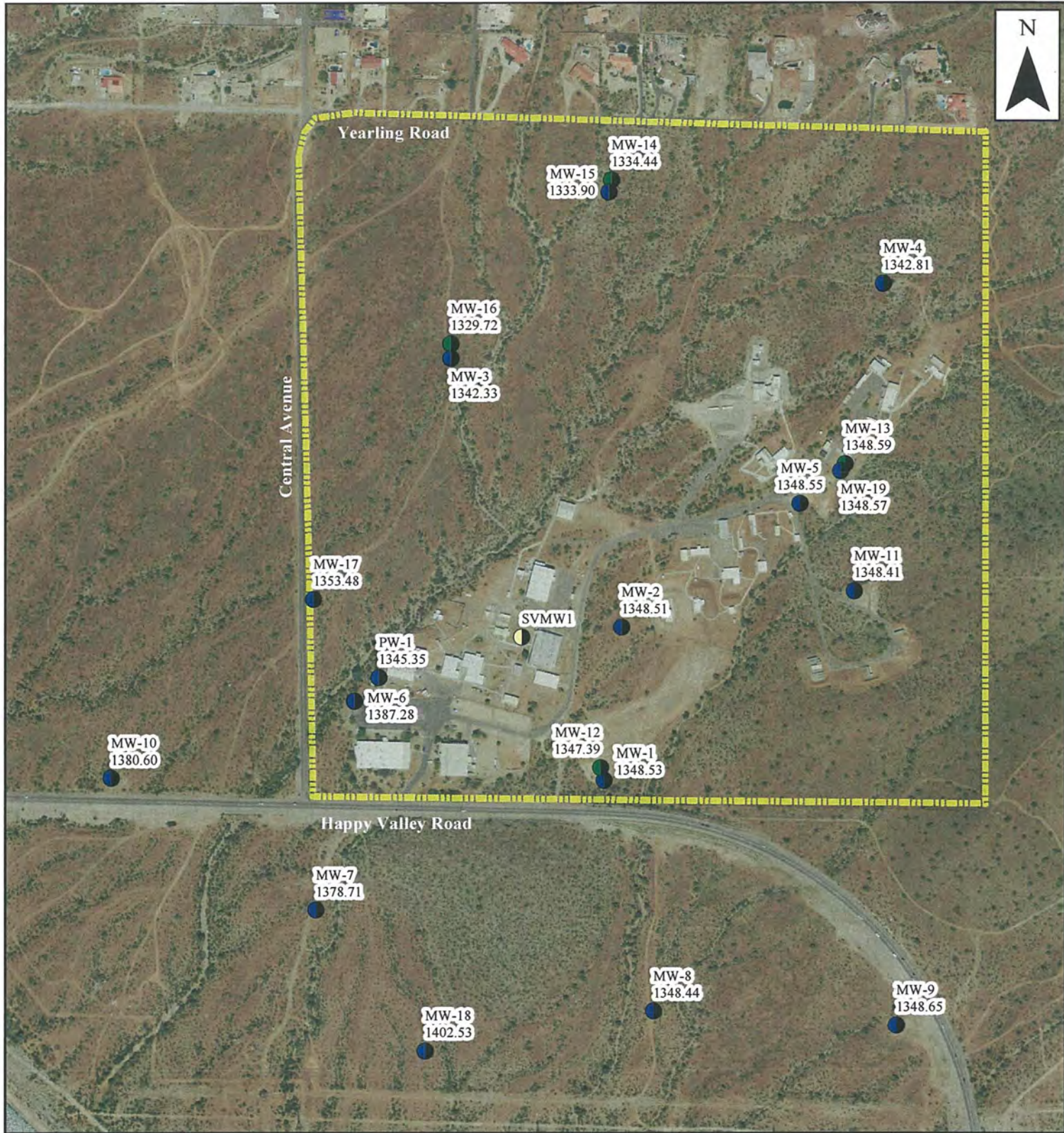


Groundwater Elevation  
October 24, 2011  
2011 Annual Monitoring Report

February 2012

Figure 13



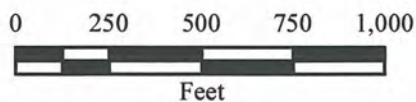


## Legend

- Deep Monitor Well
- Monitor Well
- Soil Vapor Monitor Well

Lease Property Boundary

MW-1 / Well ID  
1348.53 / Groundwater Elevation (ft amsl)

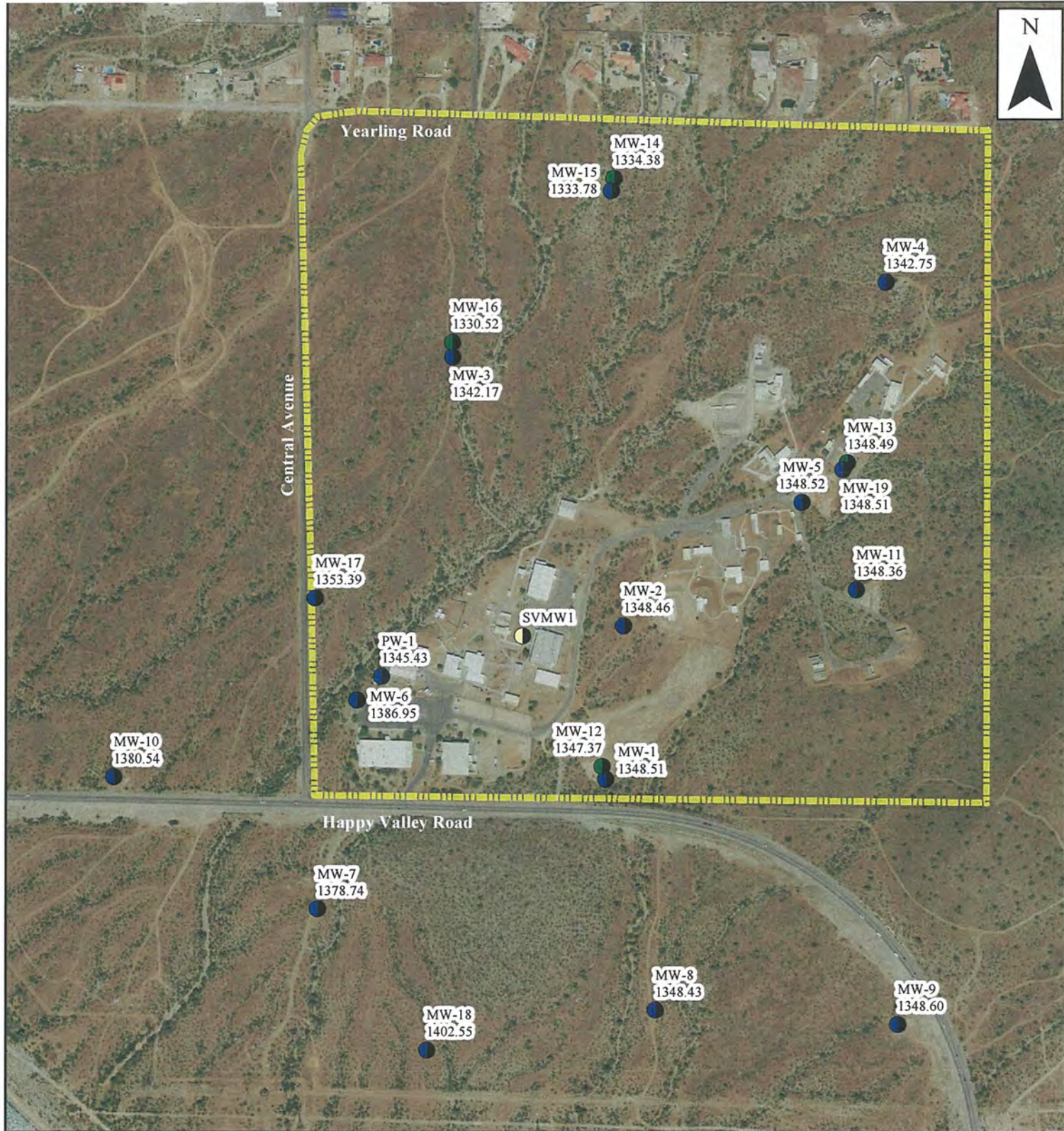


Groundwater Elevation  
November 28, 2011  
2011 Annual Monitoring Report

February 2012

Figure 14

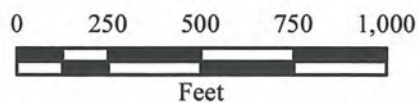




## Legend

- Deep Monitor Well
- Monitor Well
- Soil Vapor Monitor Well
- Lease Property Boundary

MW-1 / Well ID  
1348.51 / Groundwater Elevation (ft amsl)

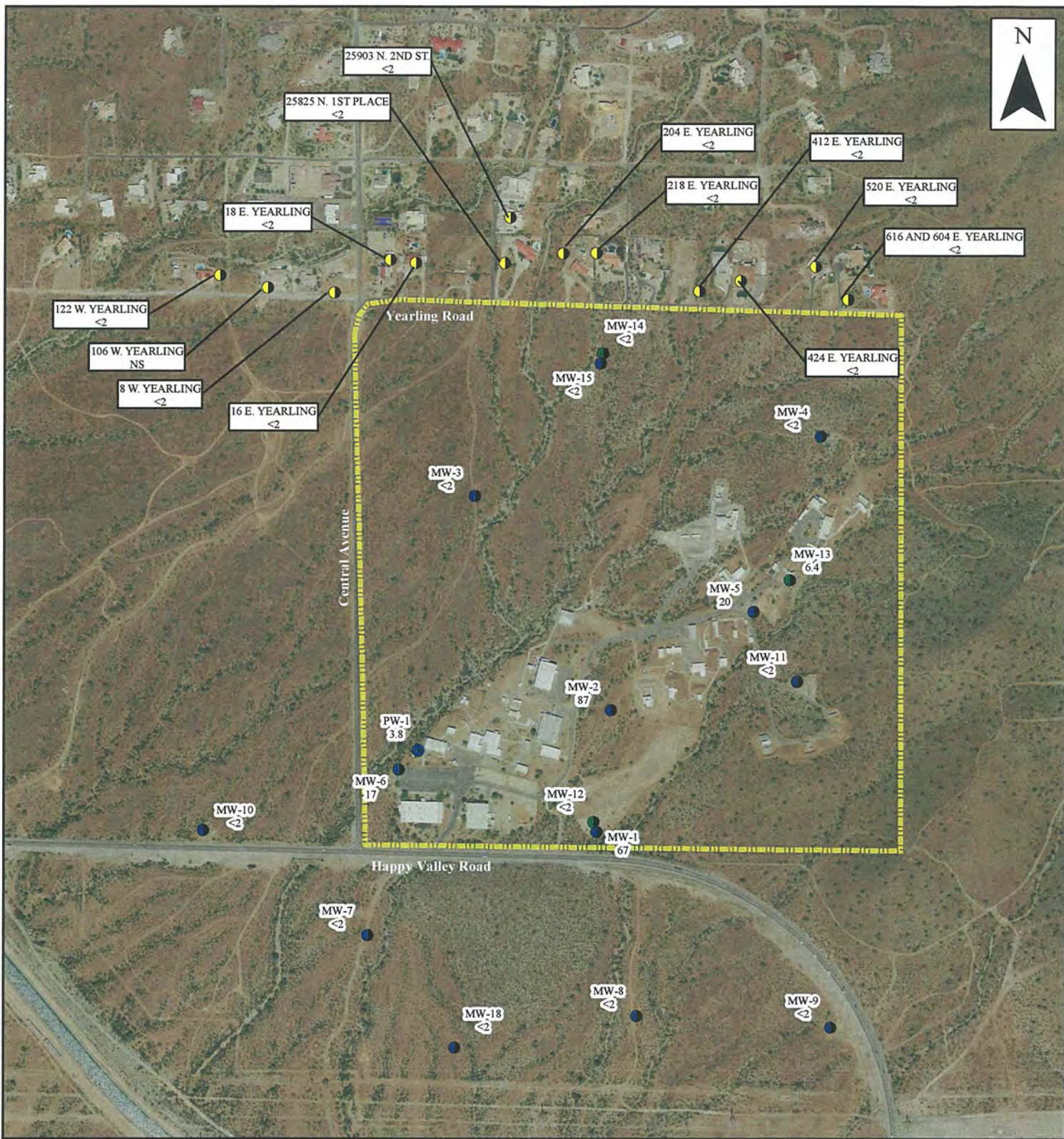


Groundwater Elevation  
December 27, 2011  
2011 Annual Monitoring Report

February 2012

Figure 15





## Legend

- Deep Monitor Well
- Monitor Well
- Former Production Well
- Private Domestic Wells



Lease Property Boundary

MW-1 / Well ID  
67 / Perchlorate Concentration (µg/L)

NS = not sampled

0 250 500 750 1,000



Feet

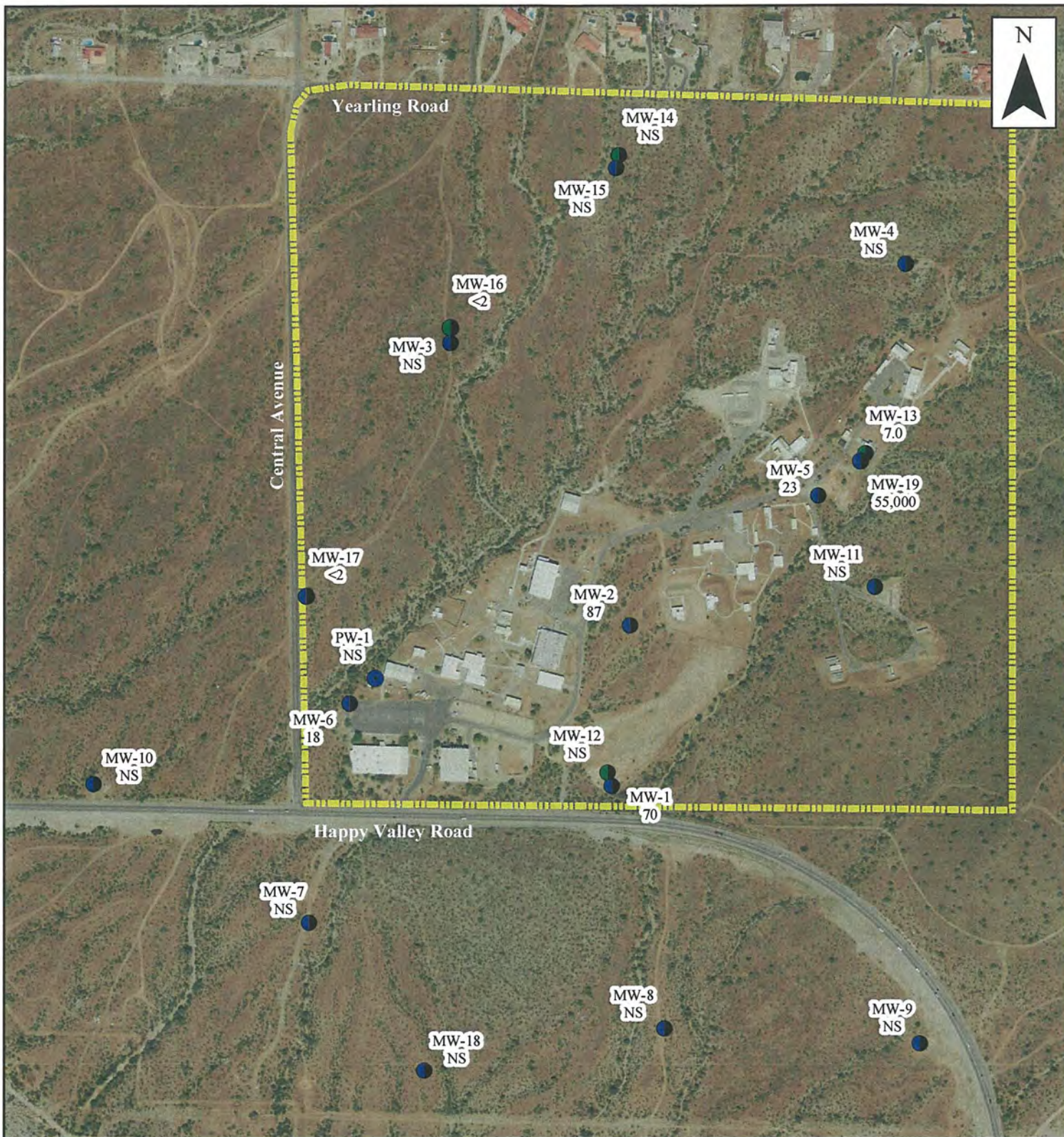


First Quarter 2011  
Perchlorate Concentration Map  
2011 Annual Monitoring Report

February 2012

Figure 16





## Legend

- Deep Monitor Well
- Monitor Well
- Former Production Well
- Lease Property Boundary

MW-1 / Well ID  
70 / Perchlorate Concentration (µg/L)

NS = not sampled

0 250 500 750 1,000



Feet

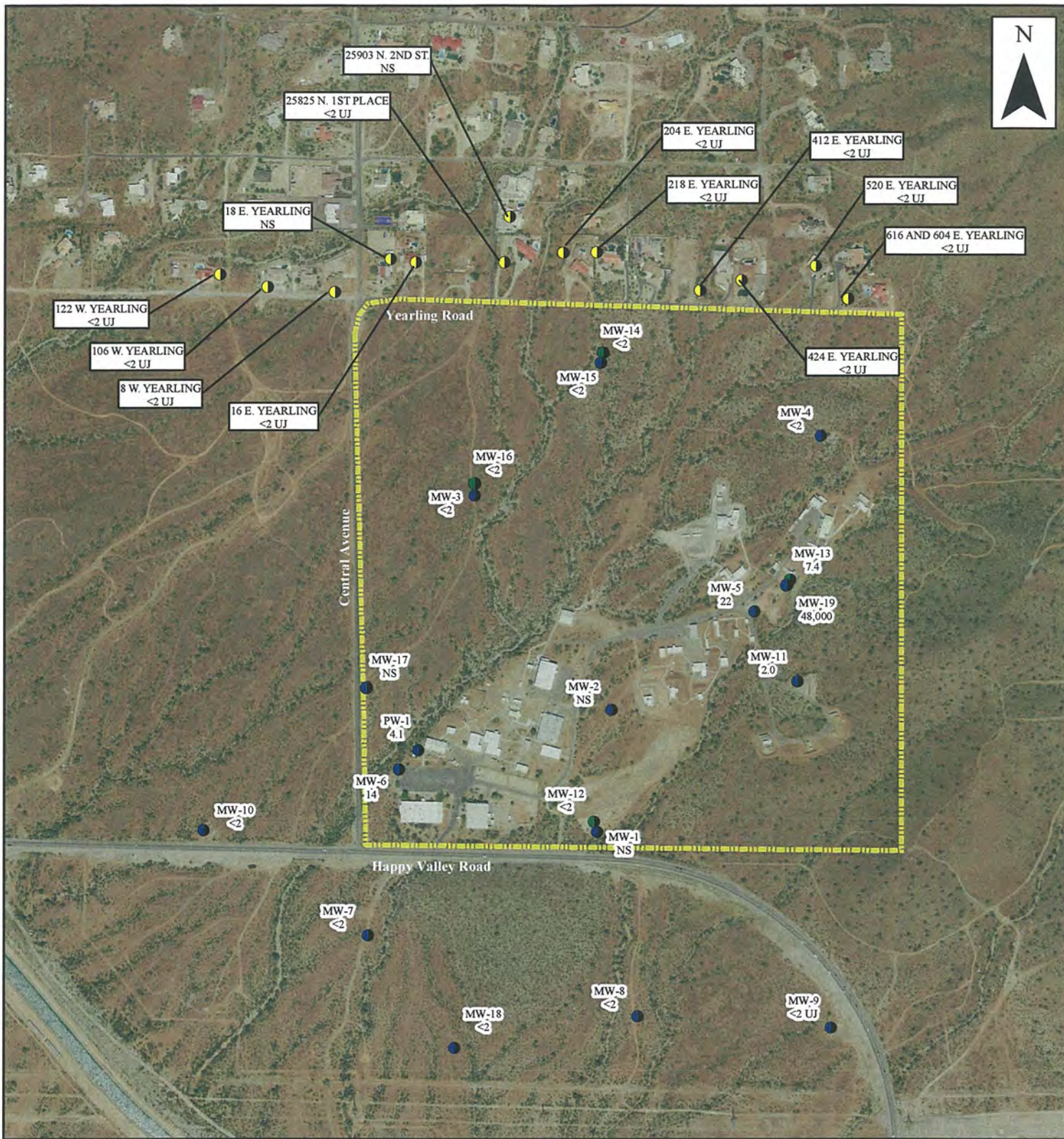


Second Quarter 2011  
Perchlorate Concentration Map  
2011 Annual Monitoring Report

February 2012

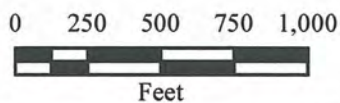
**Figure 17**





## Legend

- Deep Monitor Well
- Monitor Well
- ▭ Lease Property Boundary
- MW-5 / 22 Well ID / Perchlorate Concentration (µg/L)
- NS = not sampled

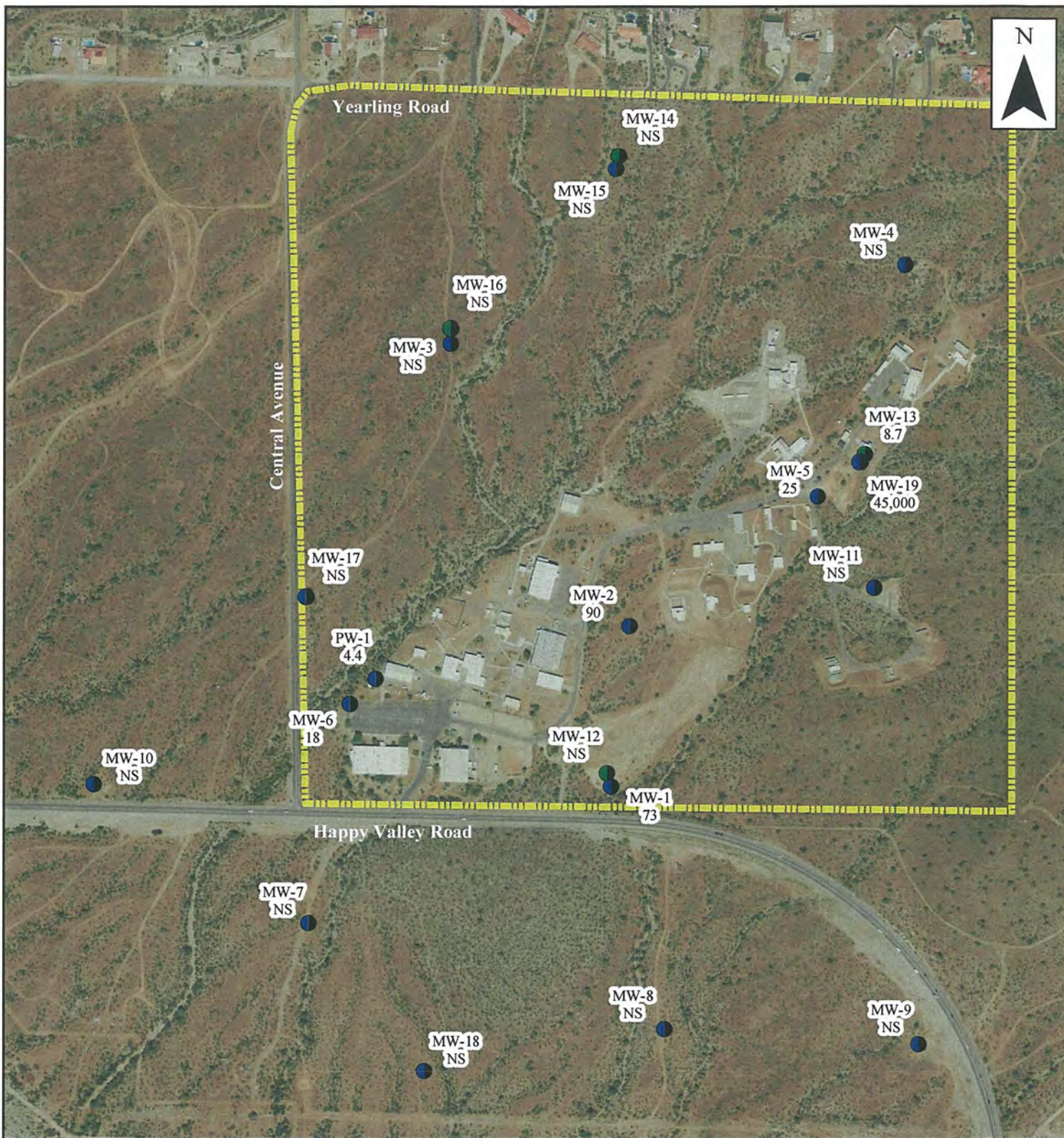


Third Quarter 2011  
Perchlorate Concentration Map  
2011 Annual Monitoring Report

February 2012

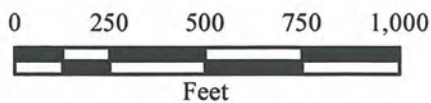
Figure 18





## Legend

- Deep Monitor Well
- Monitor Well
- Lease Property Boundary
- MW-1 / 73 Well ID / Perchlorate Concentration (µg/L)
- NS = not sampled



Fourth Quarter 2011  
Perchlorate Concentration Map  
2011 Annual Monitoring Report

February 2012

Figure 19