

FIGURES



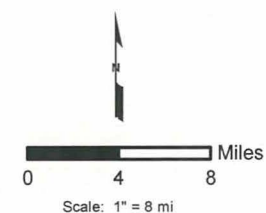


LEGEND

★ Approximate site location

NOTES

Basemap source: ESRI National Geographic World Map.

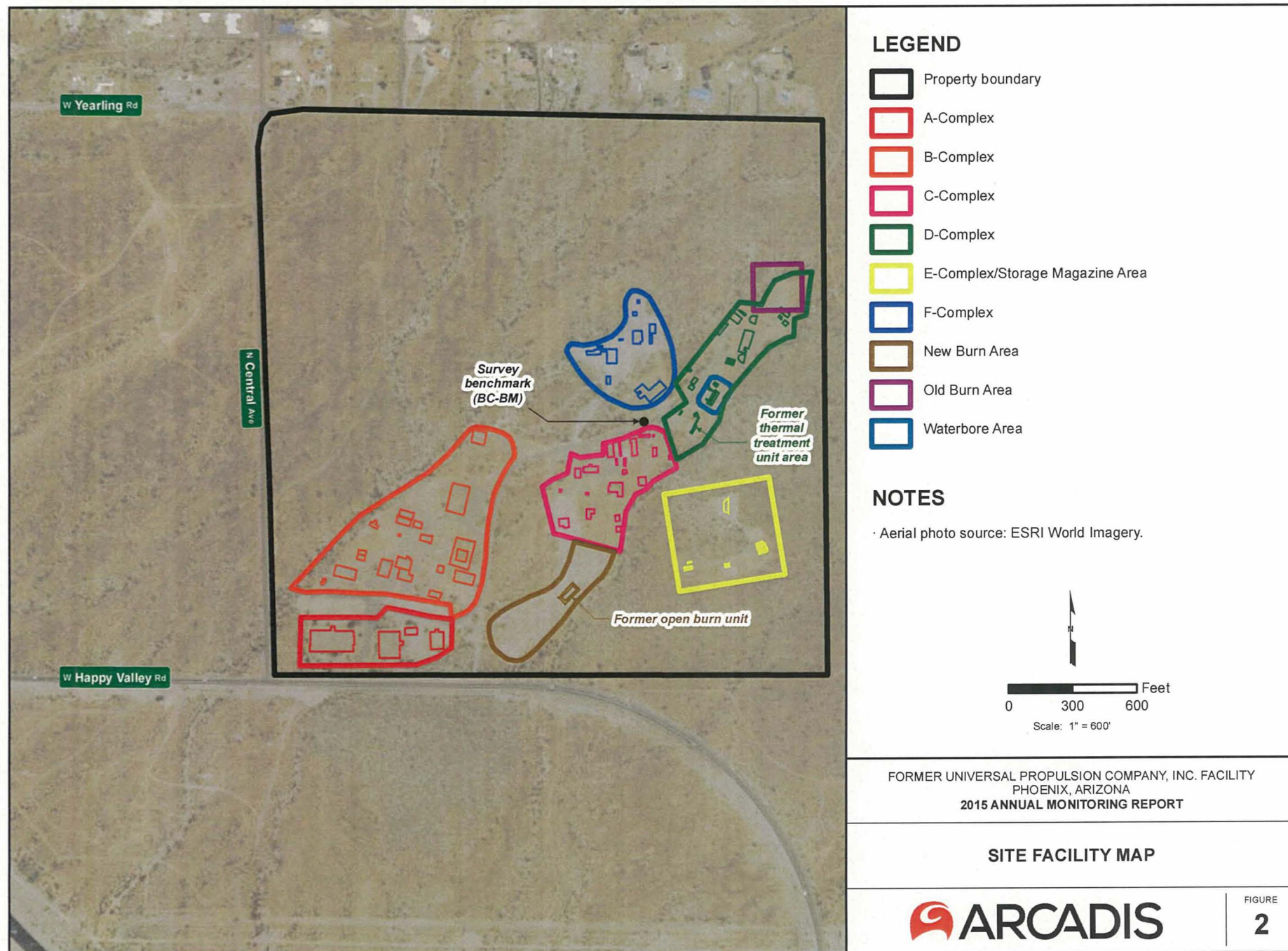


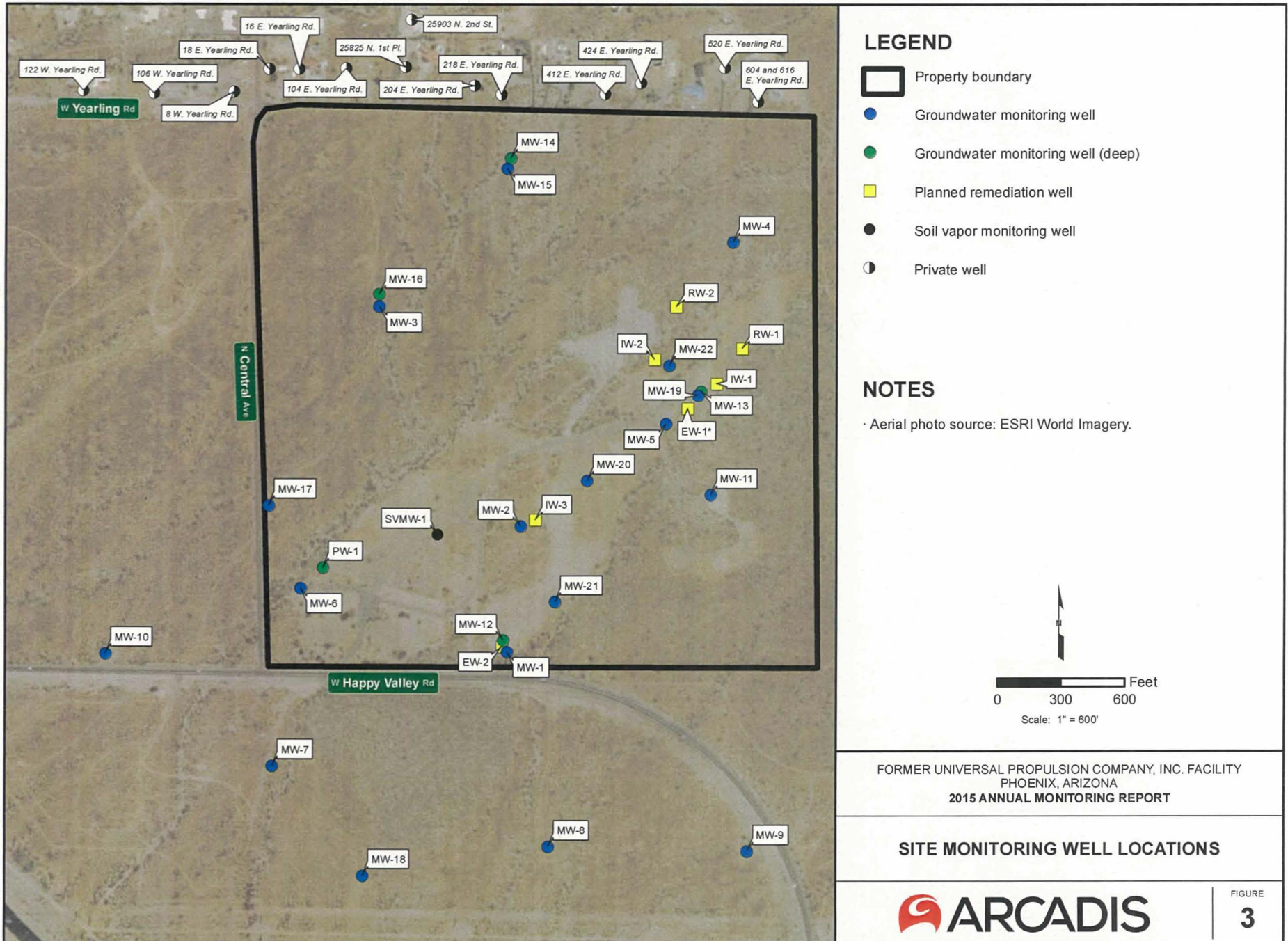
FORMER UNIVERSAL PROPULSION COMPANY, INC. FACILITY
PHOENIX, ARIZONA
2015 ANNUAL MONITORING REPORT

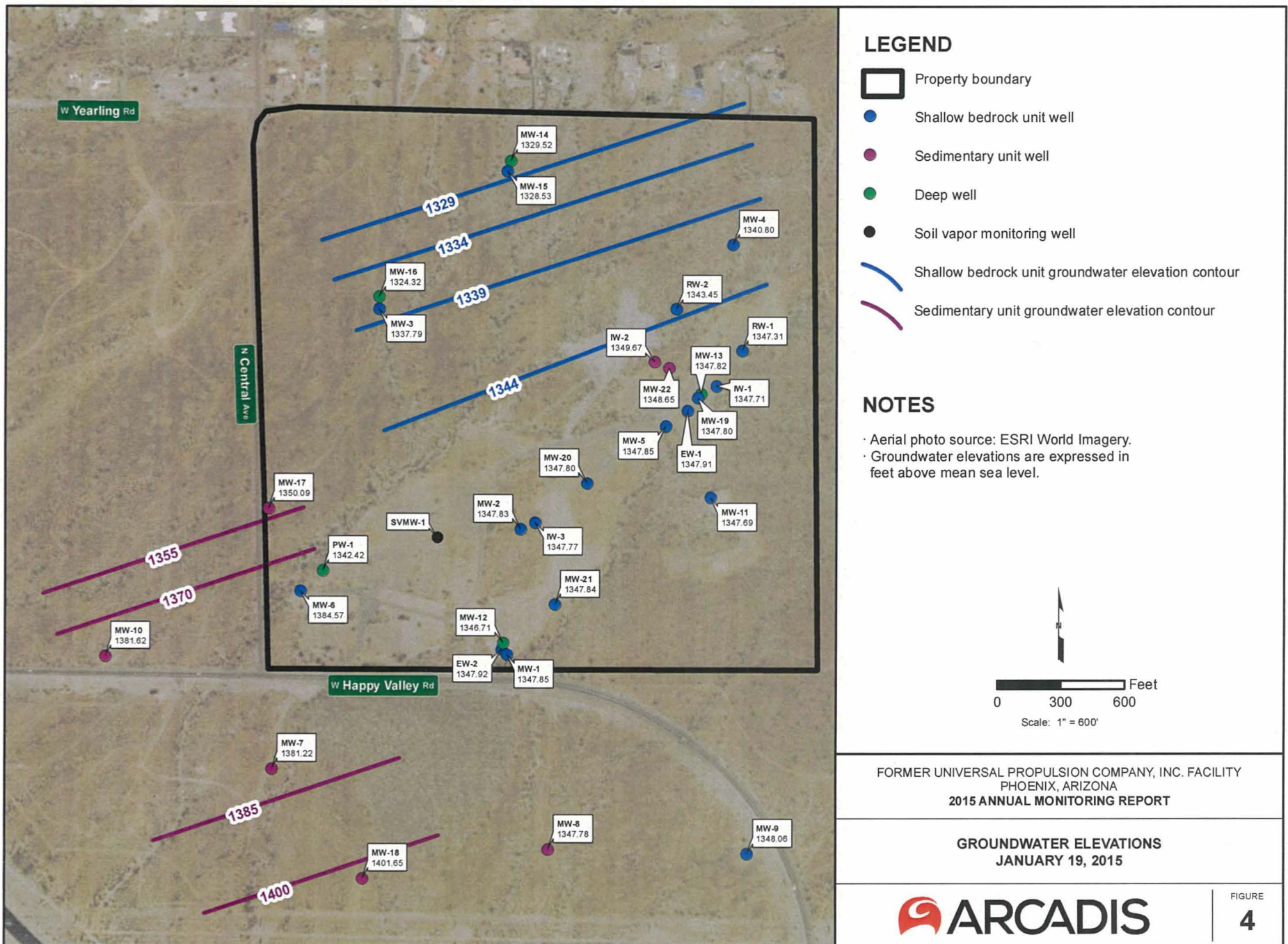
SITE LOCATION MAP

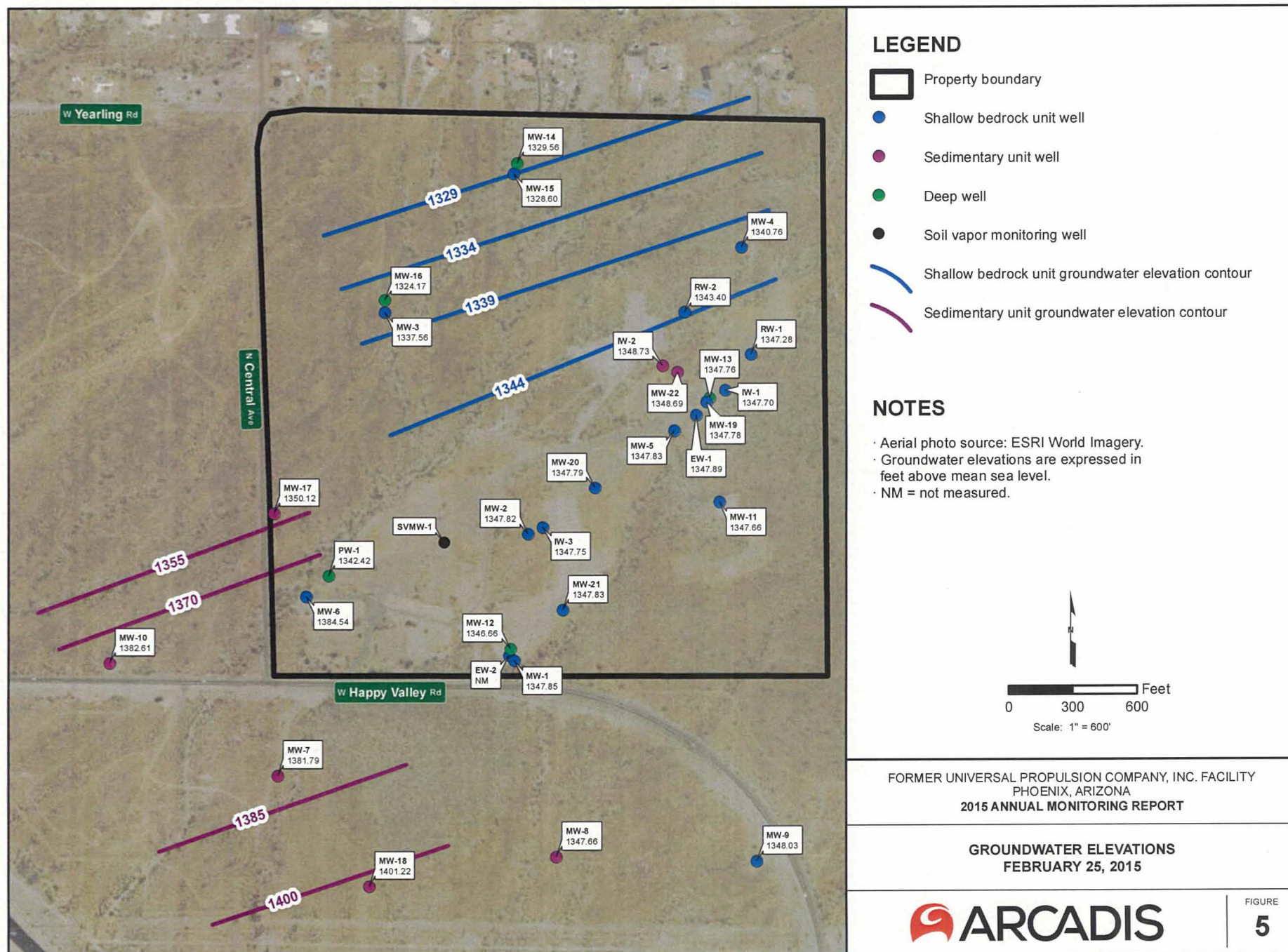


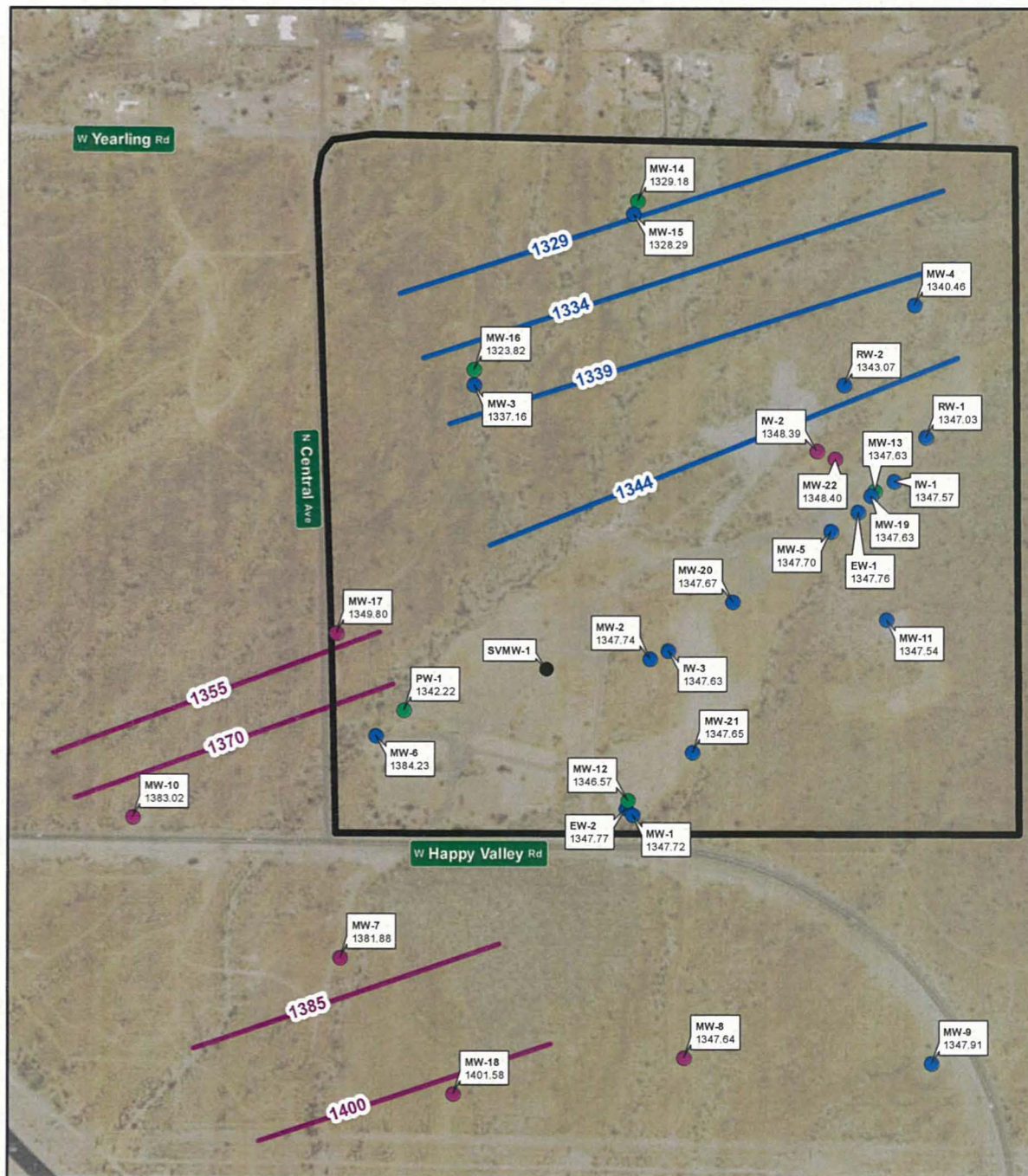
FIGURE
1









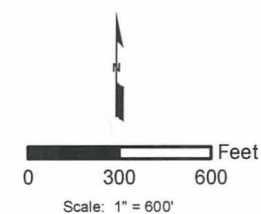


LEGEND

- Property boundary
- Shallow bedrock unit well
- Sedimentary unit well
- Deep well
- Soil vapor monitoring well
- Shallow bedrock unit groundwater elevation contour
- Sedimentary unit groundwater elevation contour

NOTES

- Aerial photo source: ESRI World Imagery.
- Groundwater elevations are expressed in feet above mean sea level.

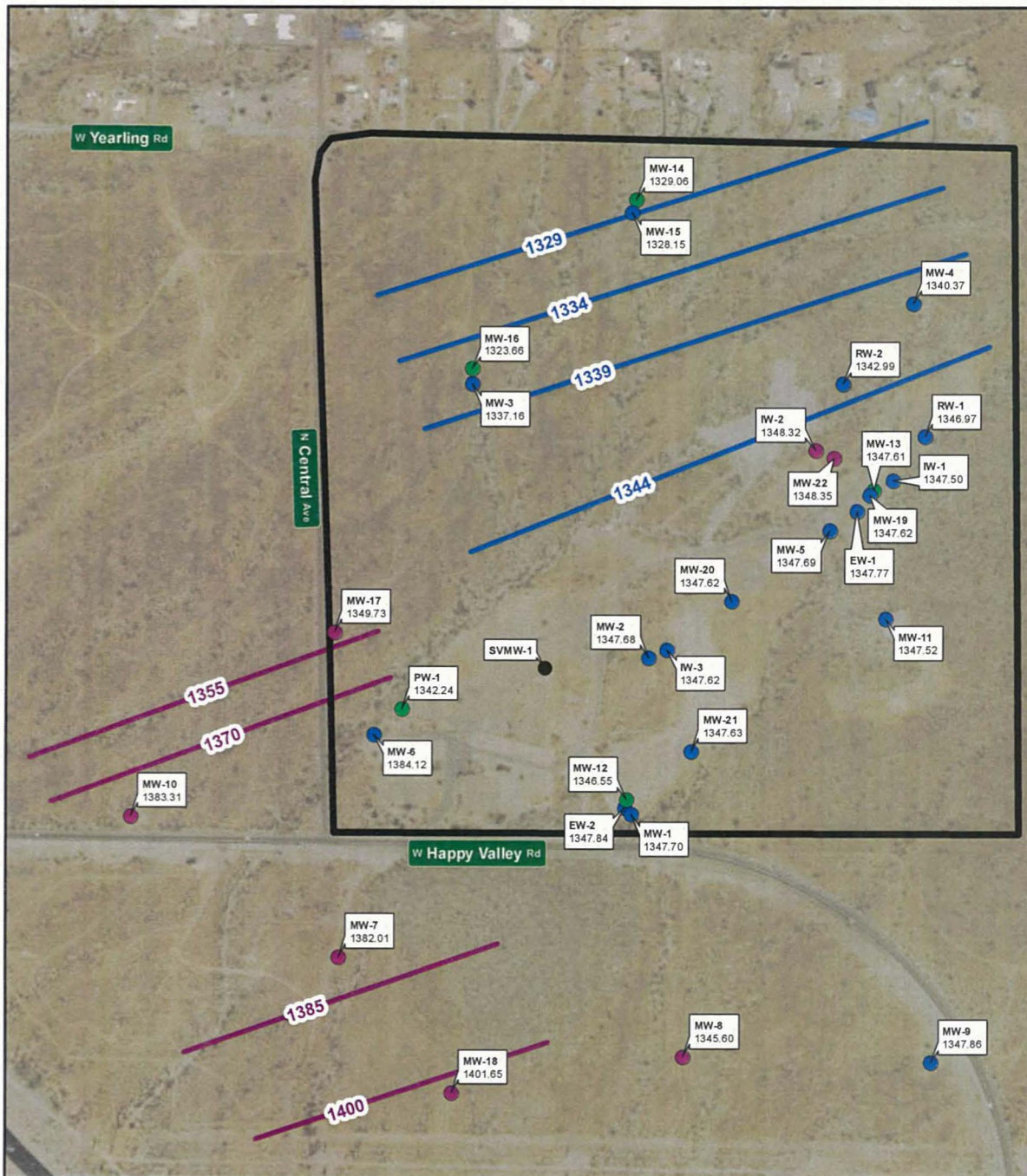


FORMER UNIVERSAL PROPULSION COMPANY, INC. FACILITY
PHOENIX, ARIZONA
2015 ANNUAL MONITORING REPORT

GROUNDWATER ELEVATIONS
MARCH 26, 2015



FIGURE
6

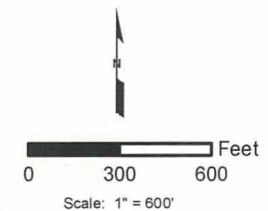


LEGEND

- Property boundary
- Shallow bedrock unit well
- Sedimentary unit well
- Deep well
- Soil vapor monitoring well
- Shallow bedrock unit groundwater elevation contour
- Sedimentary unit groundwater elevation contour

NOTES

- Aerial photo source: ESRI World Imagery.
- Groundwater elevations are expressed in feet above mean sea level.

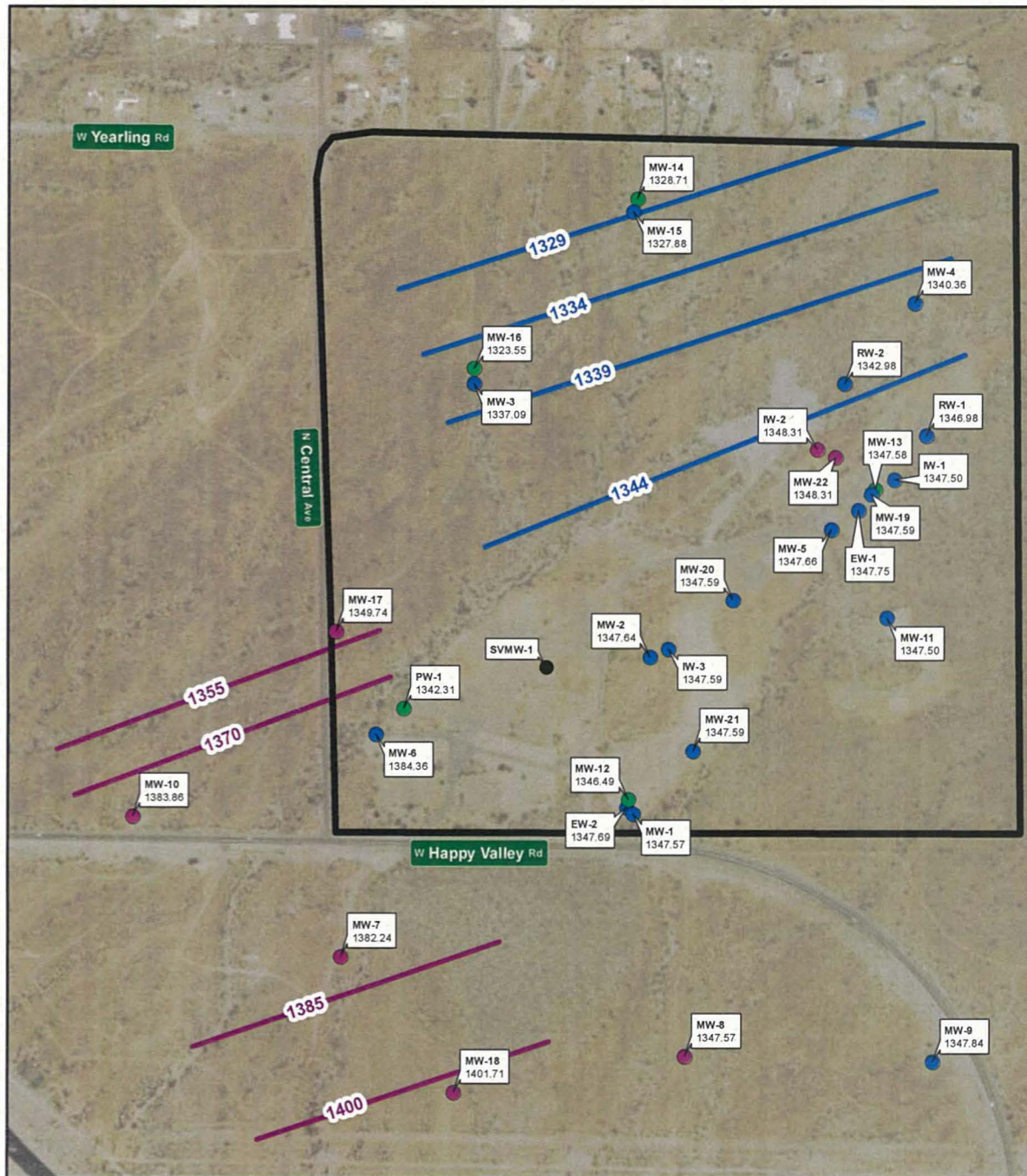


FORMER UNIVERSAL PROPULSION COMPANY, INC. FACILITY
PHOENIX, ARIZONA
2015 ANNUAL MONITORING REPORT

GROUNDWATER ELEVATIONS
APRIL 13, 2015



FIGURE
7

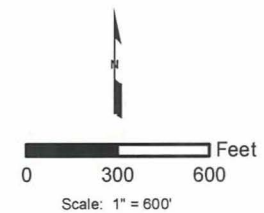


LEGEND

- Property boundary
- Shallow bedrock unit well
- Sedimentary unit well
- Deep well
- Soil vapor monitoring well
- Shallow bedrock unit groundwater elevation contour
- Sedimentary unit groundwater elevation contour

NOTES

- Aerial photo source: ESRI World Imagery.
- Groundwater elevations are expressed in feet above mean sea level.

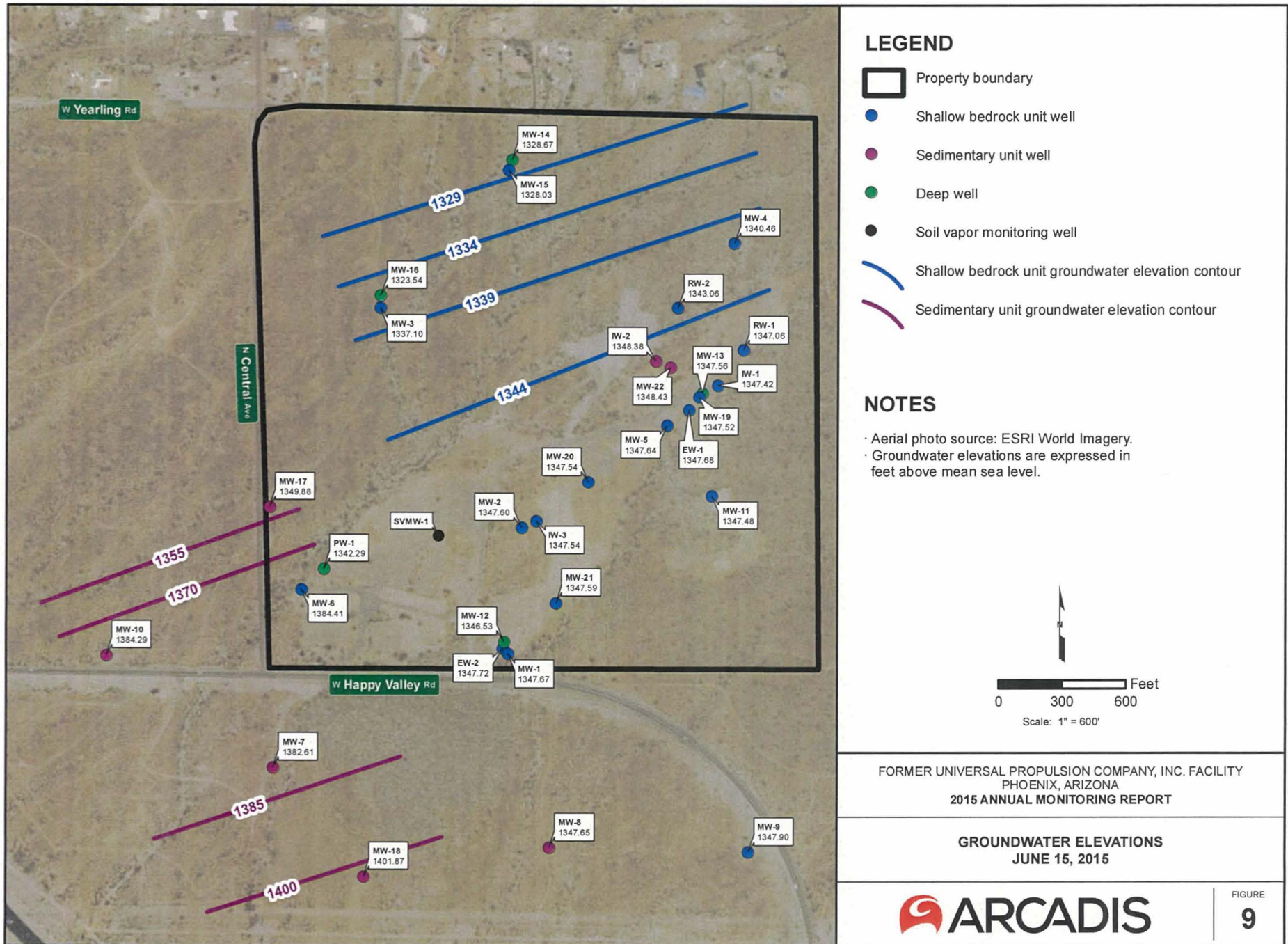


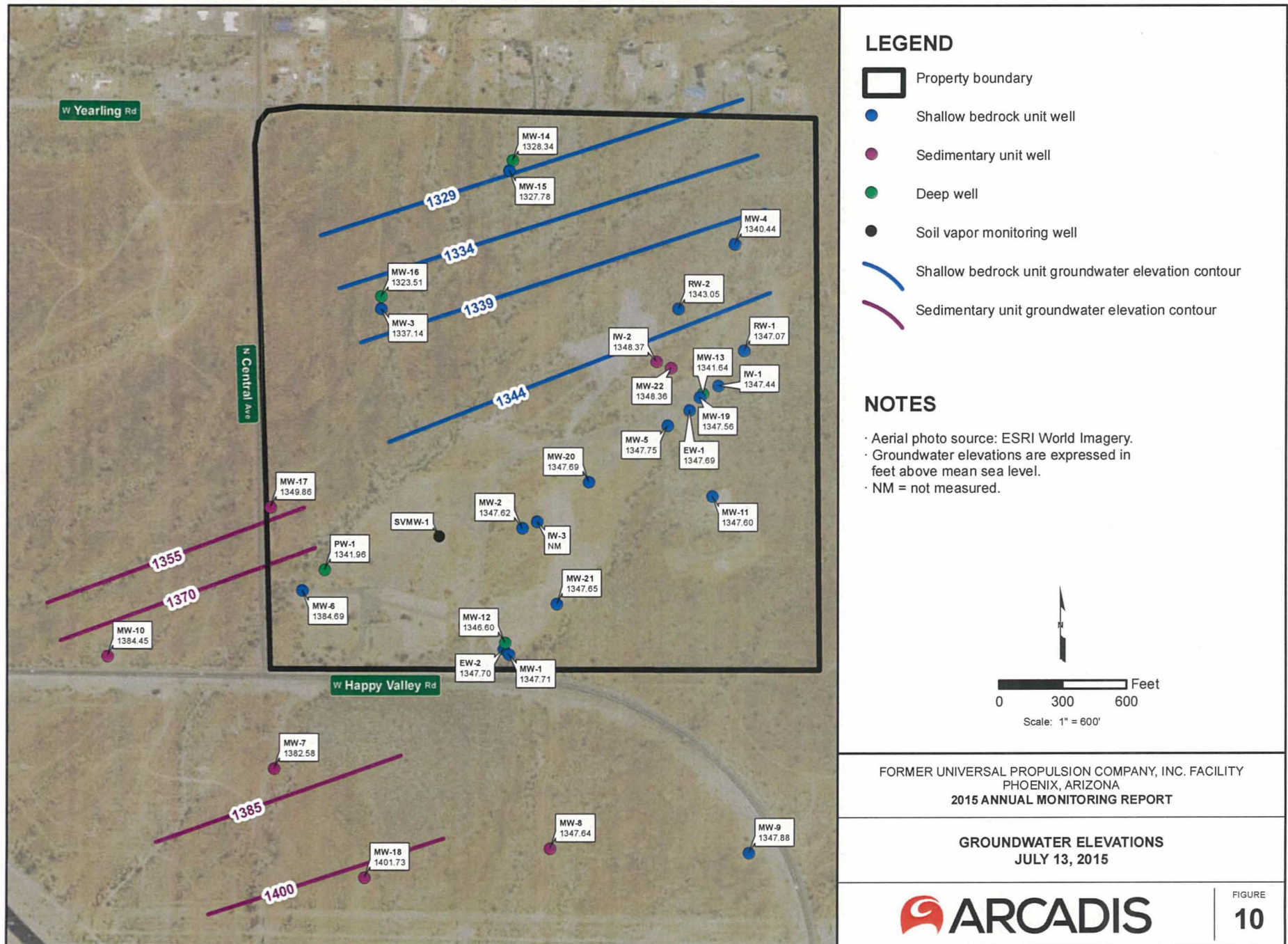
FORMER UNIVERSAL PROPULSION COMPANY, INC. FACILITY
PHOENIX, ARIZONA
2015 ANNUAL MONITORING REPORT

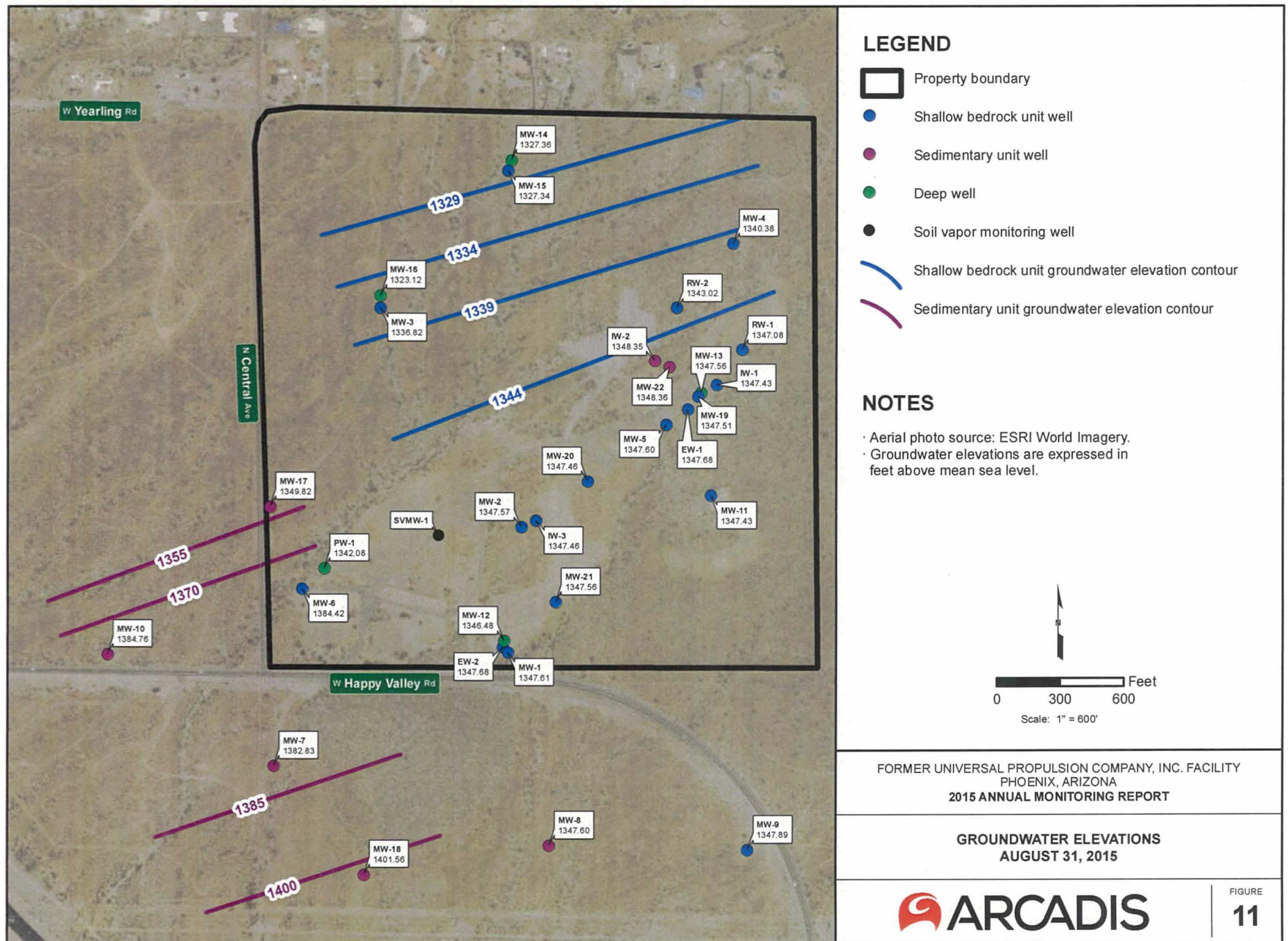
GROUNDWATER ELEVATIONS
MAY 23, 2015

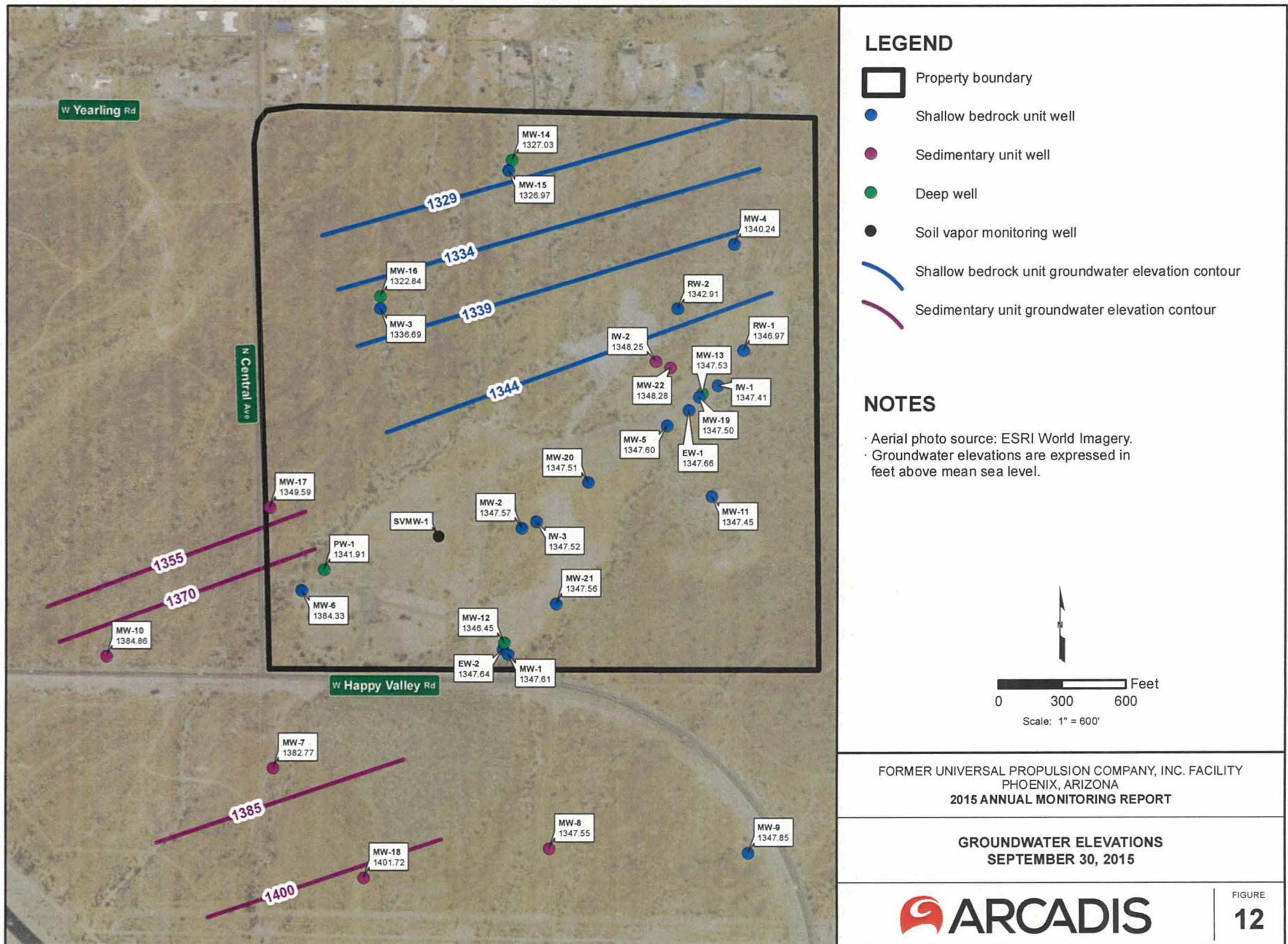


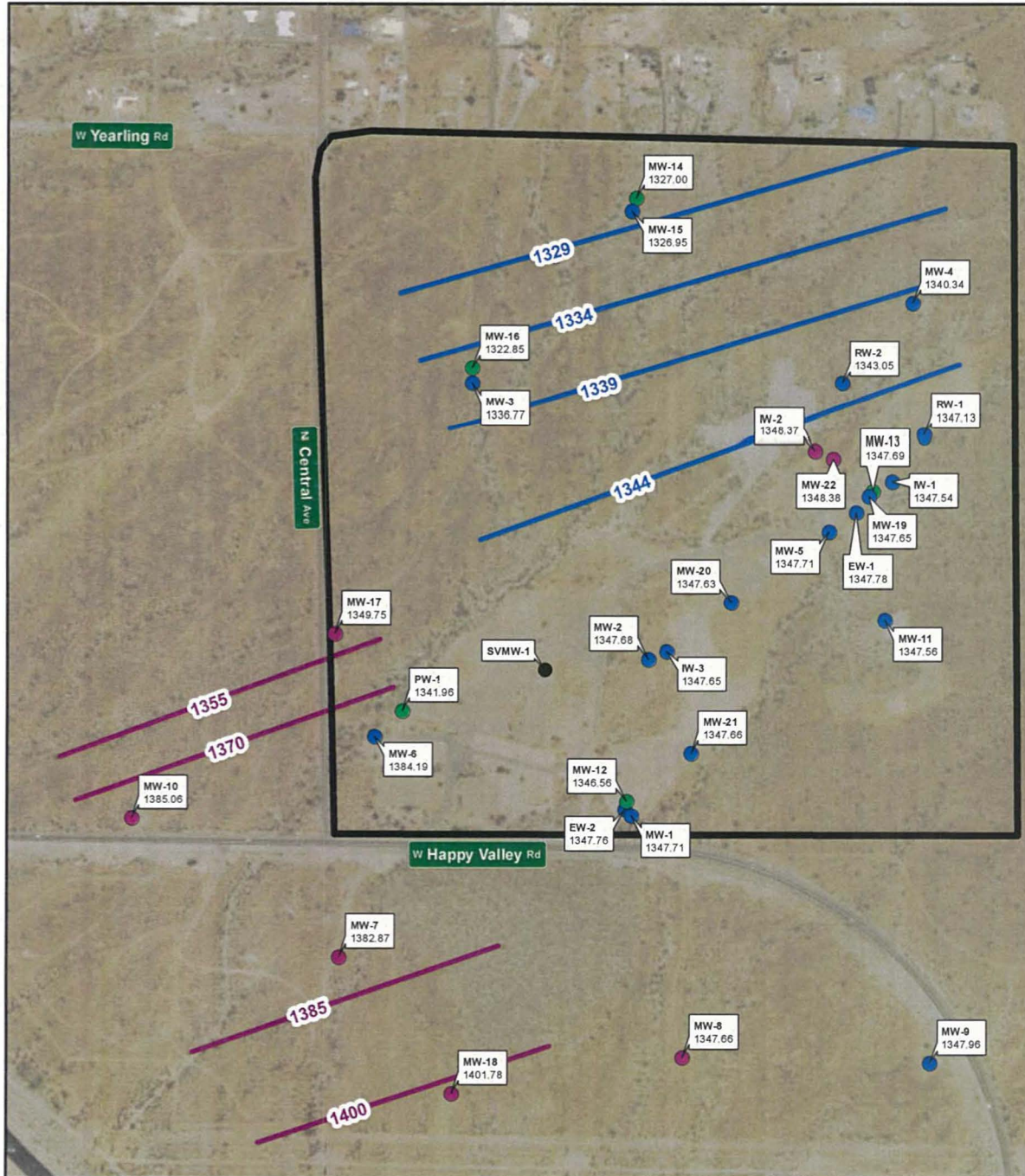
FIGURE
8









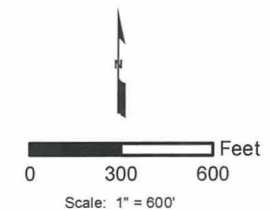


LEGEND

- Property boundary
- Shallow bedrock unit well
- Sedimentary unit well
- Deep well
- Soil vapor monitoring well
- Shallow bedrock unit groundwater elevation contour
- Sedimentary unit groundwater elevation contour

NOTES

- Aerial photo source: ESRI World Imagery.
- Groundwater elevations are expressed in feet above mean sea level.

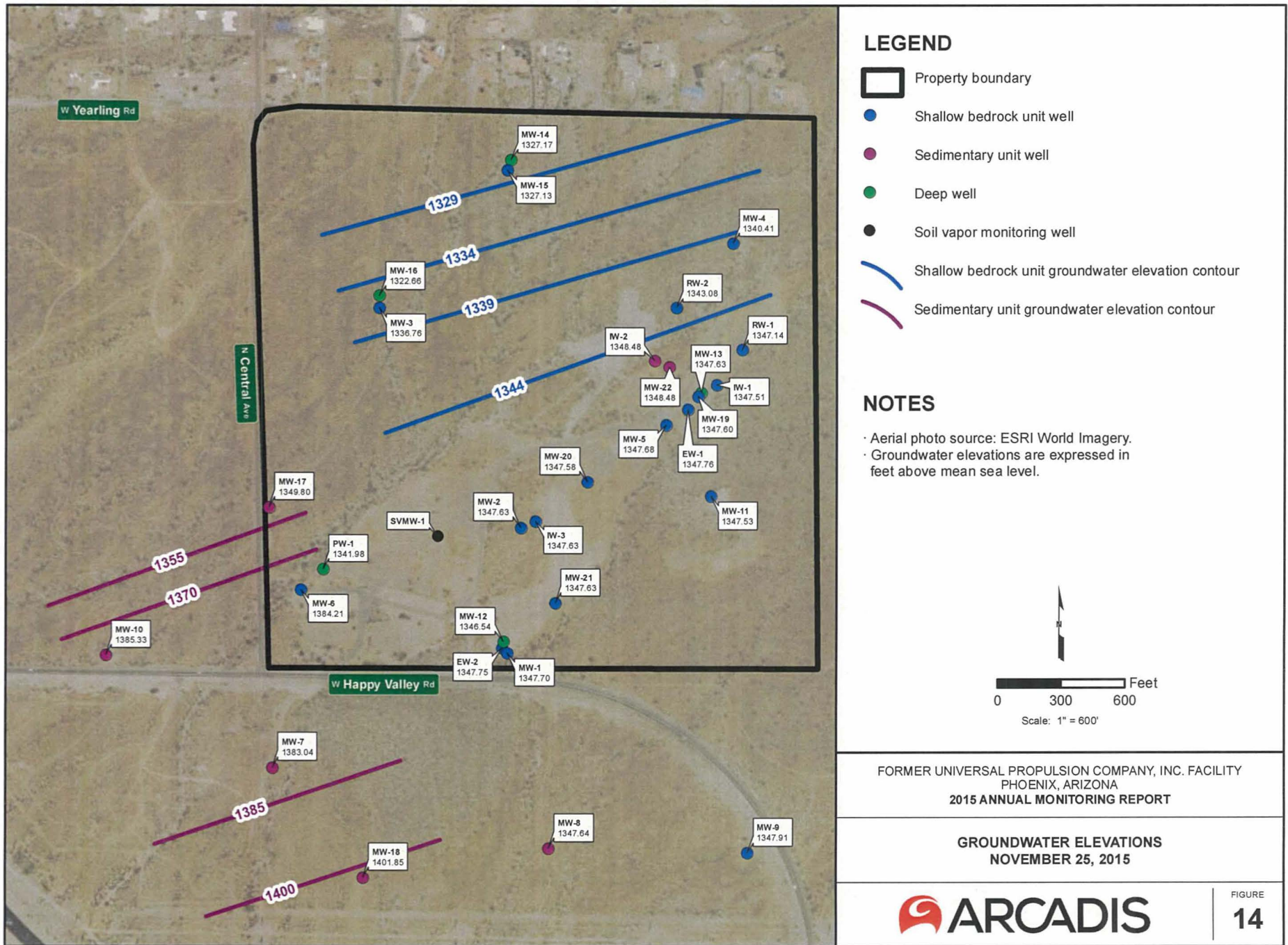


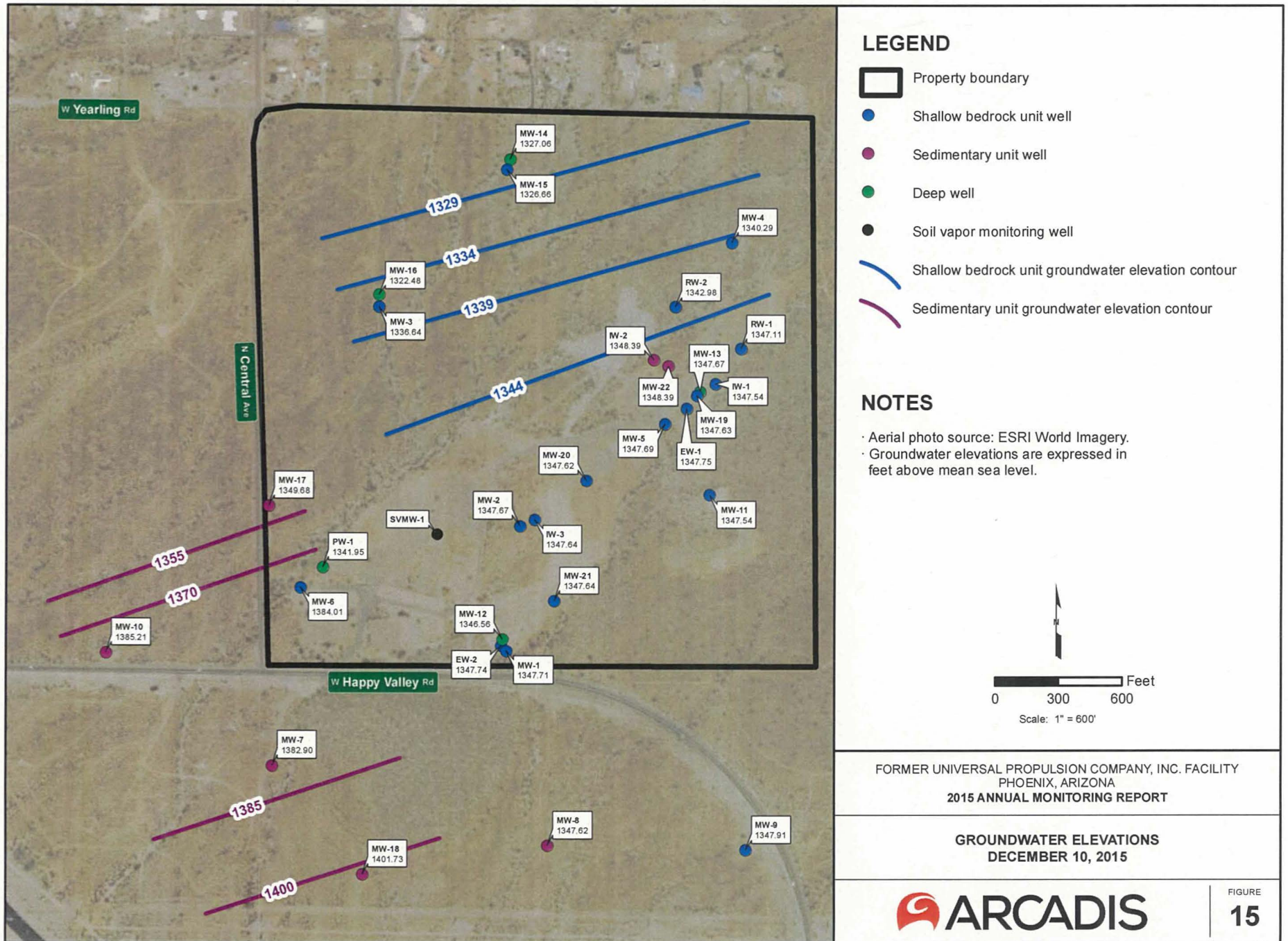
FORMER UNIVERSAL PROPULSION COMPANY, INC. FACILITY
PHOENIX, ARIZONA
2015 ANNUAL MONITORING REPORT

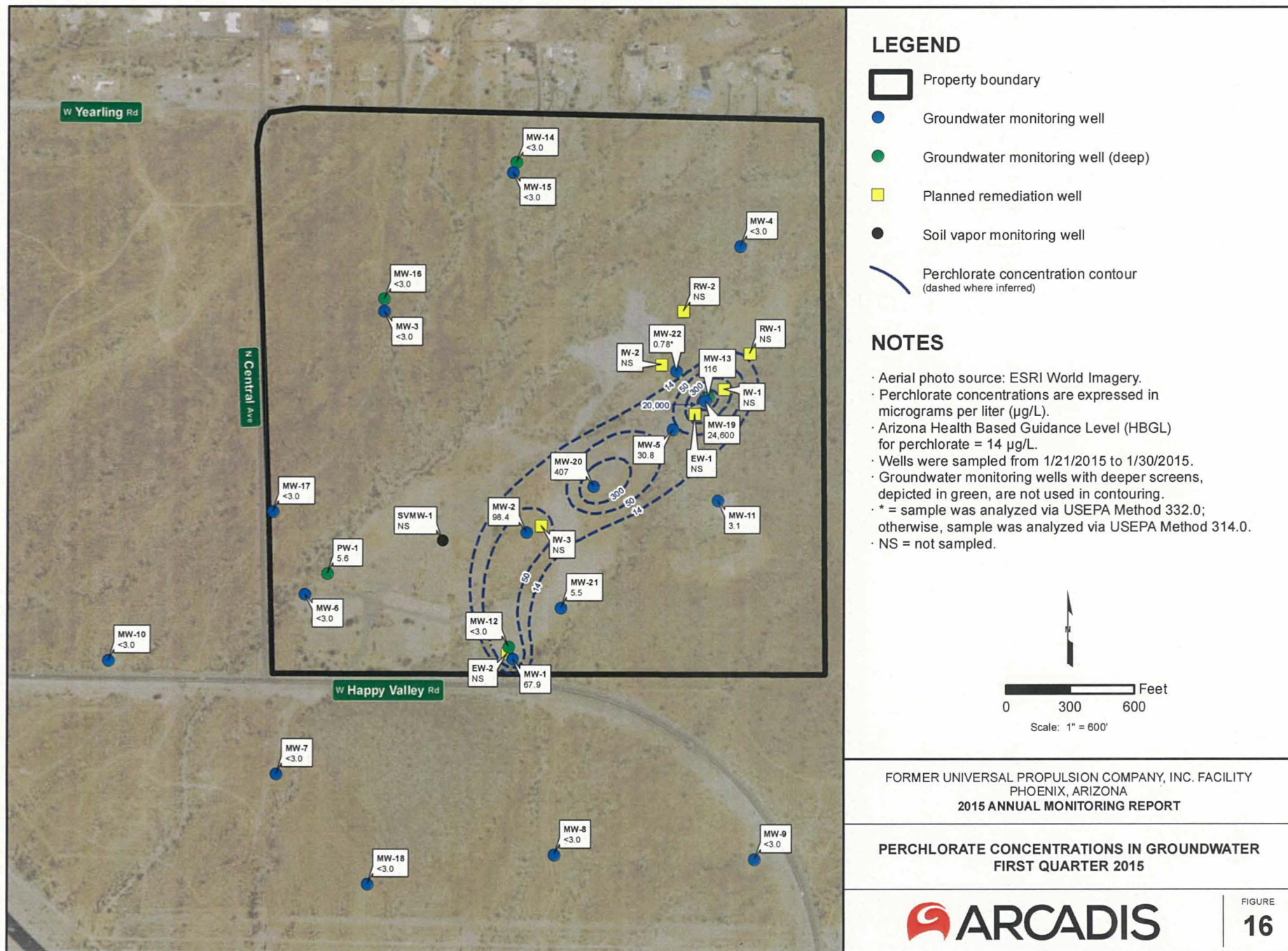
GROUNDWATER ELEVATIONS
OCTOBER 26, 2015

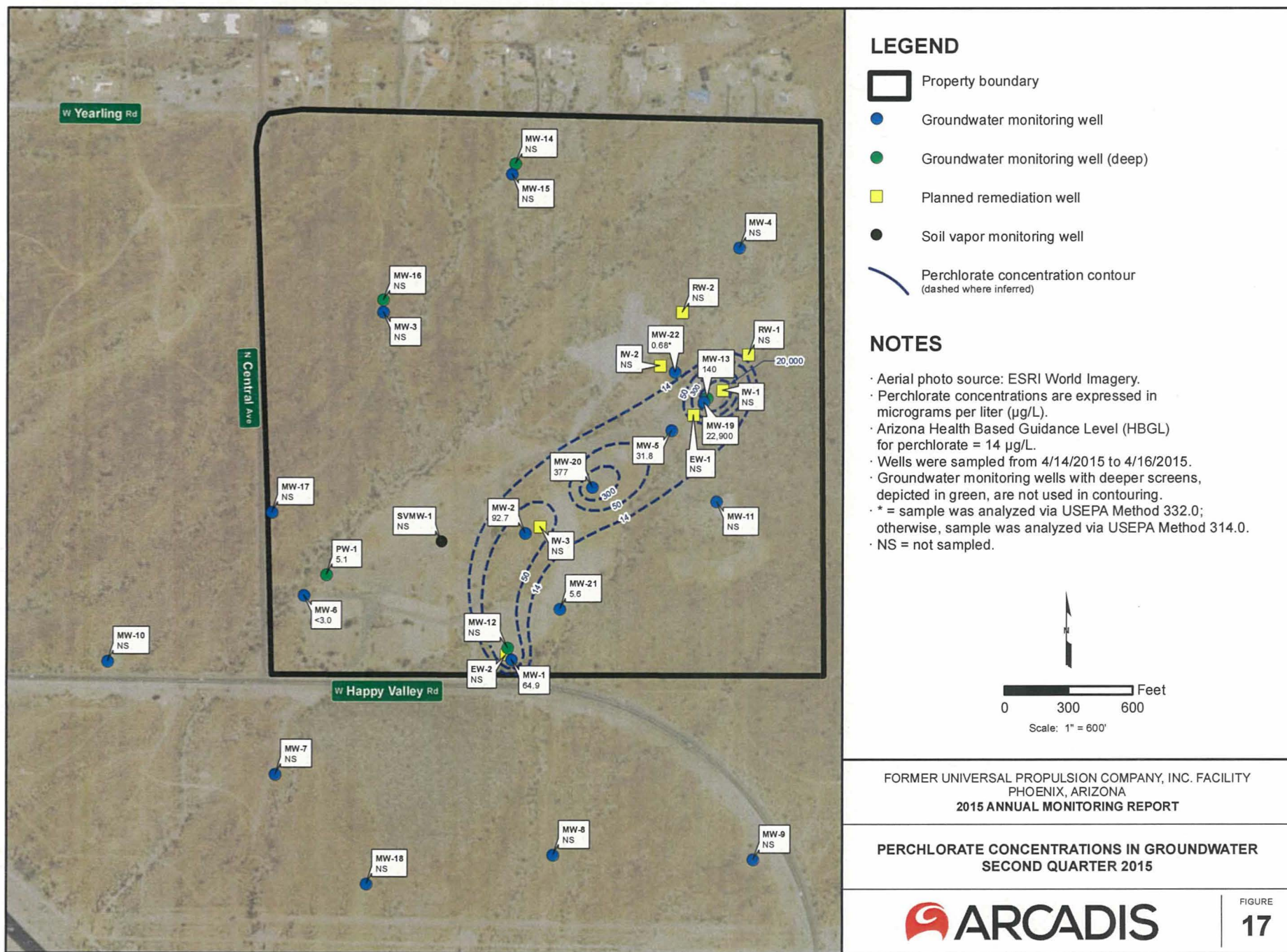
ARCADIS

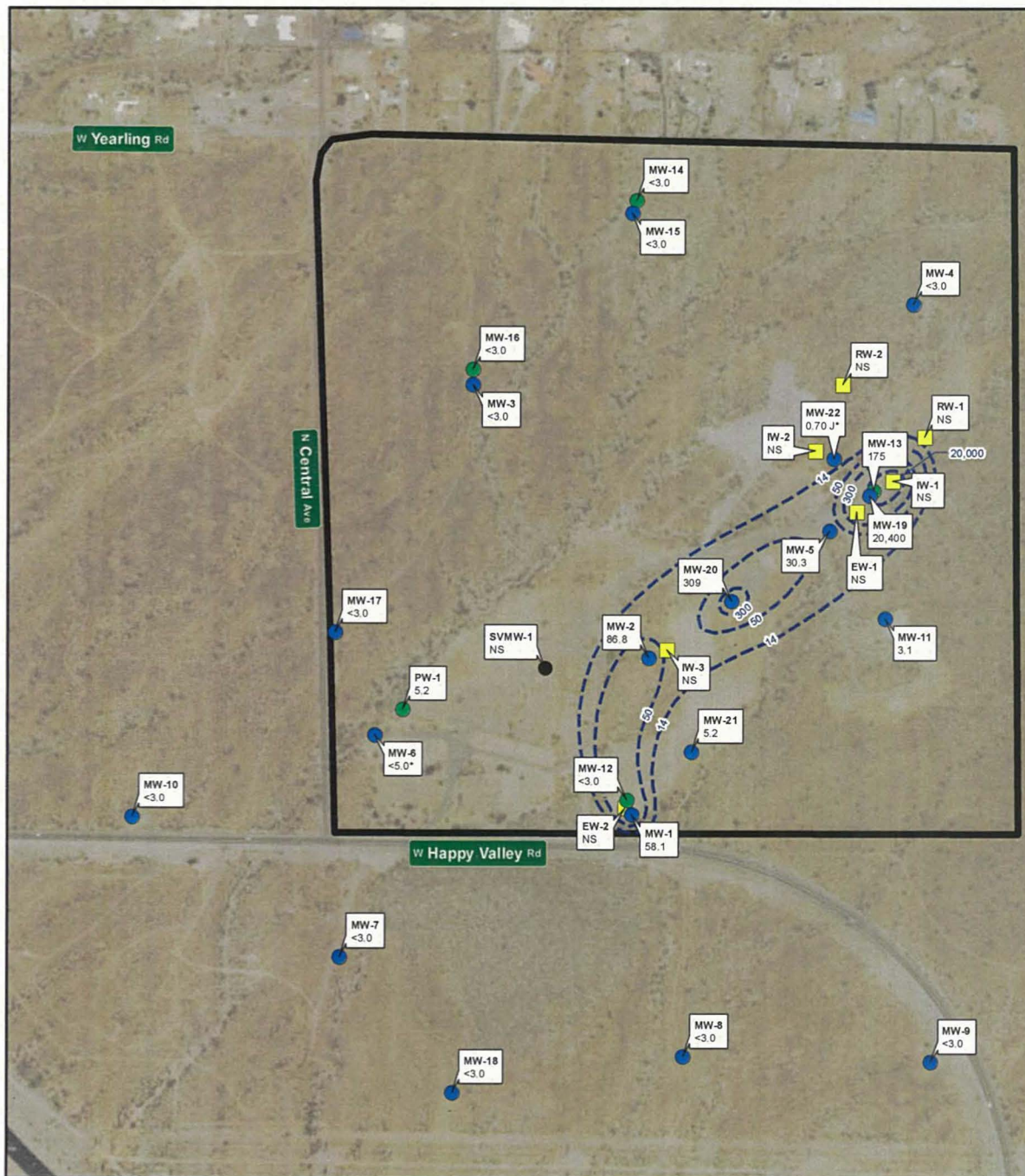
FIGURE
13









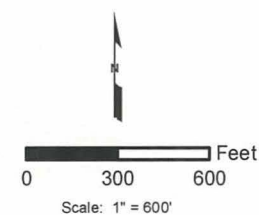


LEGEND

- Property boundary
- Groundwater monitoring well
- Groundwater monitoring well (deep)
- Planned remediation well
- Soil vapor monitoring well
- Perchlorate concentration contour (dashed where inferred)

NOTES

- Aerial photo source: ESRI World Imagery.
- Perchlorate concentrations are expressed in micrograms per liter (µg/L).
- Arizona Health Based Guidance Level (HBGL) for perchlorate = 14 µg/L.
- Wells were sampled from 7/17/2015 to 7/24/2015.
- Groundwater monitoring wells with deeper screens, depicted in green, are not used in contouring.
- * = sample was analyzed via USEPA Method 332.0; otherwise, sample was analyzed via USEPA Method 314.0.
- J = concentration is estimated.
- NS = not sampled.



FORMER UNIVERSAL PROPULSION COMPANY, INC. FACILITY
PHOENIX, ARIZONA
2015 ANNUAL MONITORING REPORT

PERCHLORATE CONCENTRATIONS IN GROUNDWATER
THIRD QUARTER 2015

ARCADIS

FIGURE
18

