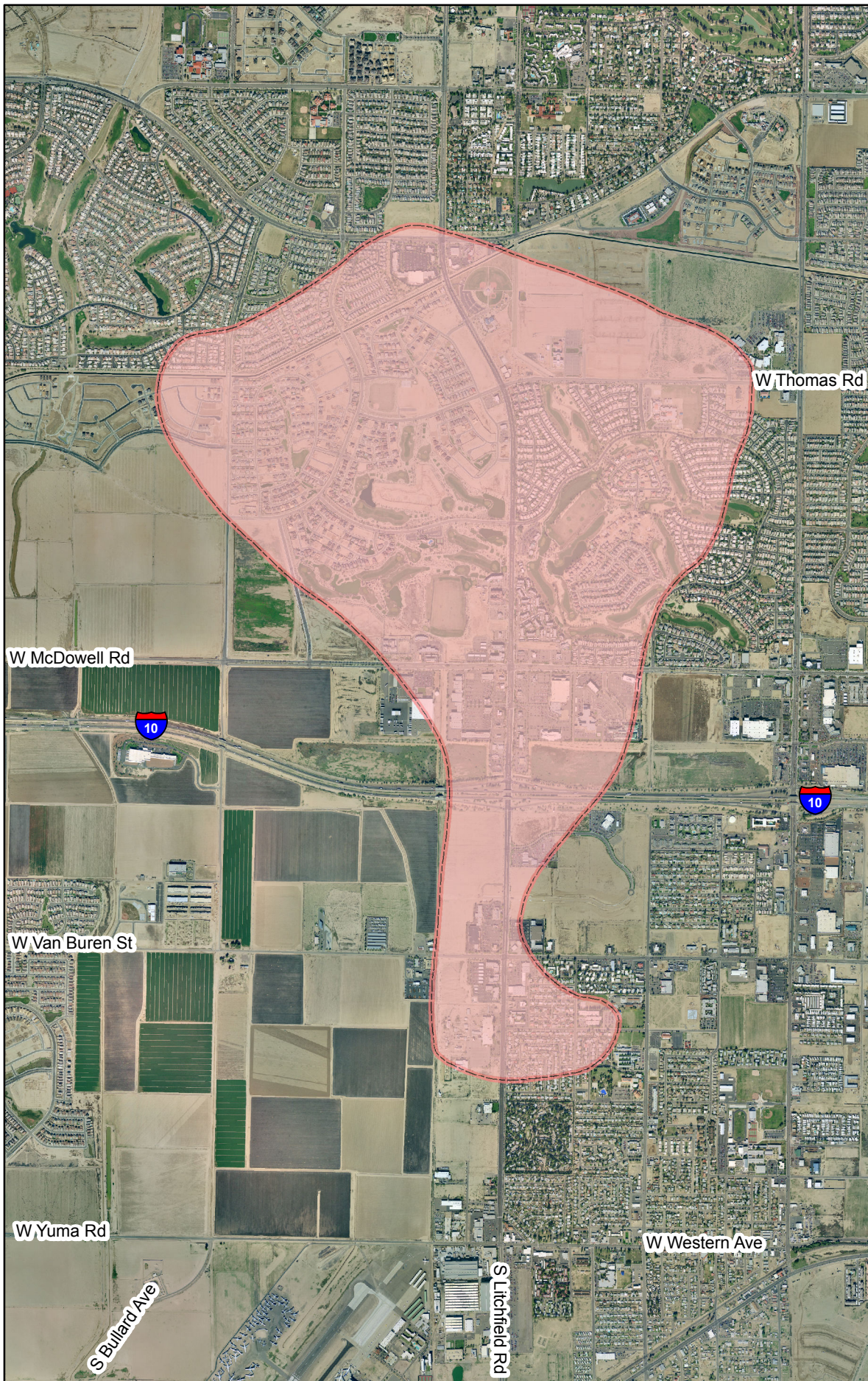



Phoenix Goodyear Airport North EPA NPL Site - Goodyear, Arizona



Legend

 Estimated Plume Boundary

N



0 0.25 0.5
Miles

Map Date: July, 2012

WASTE PROGRAMS DIVISION
GIS and Data Management Unit

Map produced by Arizona Department of Environmental Quality (ADEQ), GIS and Data Management Unit, TS Summers

S:\gisdev\its3\superfund2012.5\Phoenix\ EPA NPL\pga_n\project2012.5\ PhxGoodyearN2012.5.mxd.
web name: pganmap

Data Sources: Arizona Department of Environmental Quality, Arizona Land Resources Information System, Arizona Department of Transportation. Image: Maricopa County 2004
Projection: UTM, Nad 83, Meters

"EPA does not consider surface areas above the contaminated groundwater that are outside of the source area and that are not used for remediation activities as part of the Superfund site."