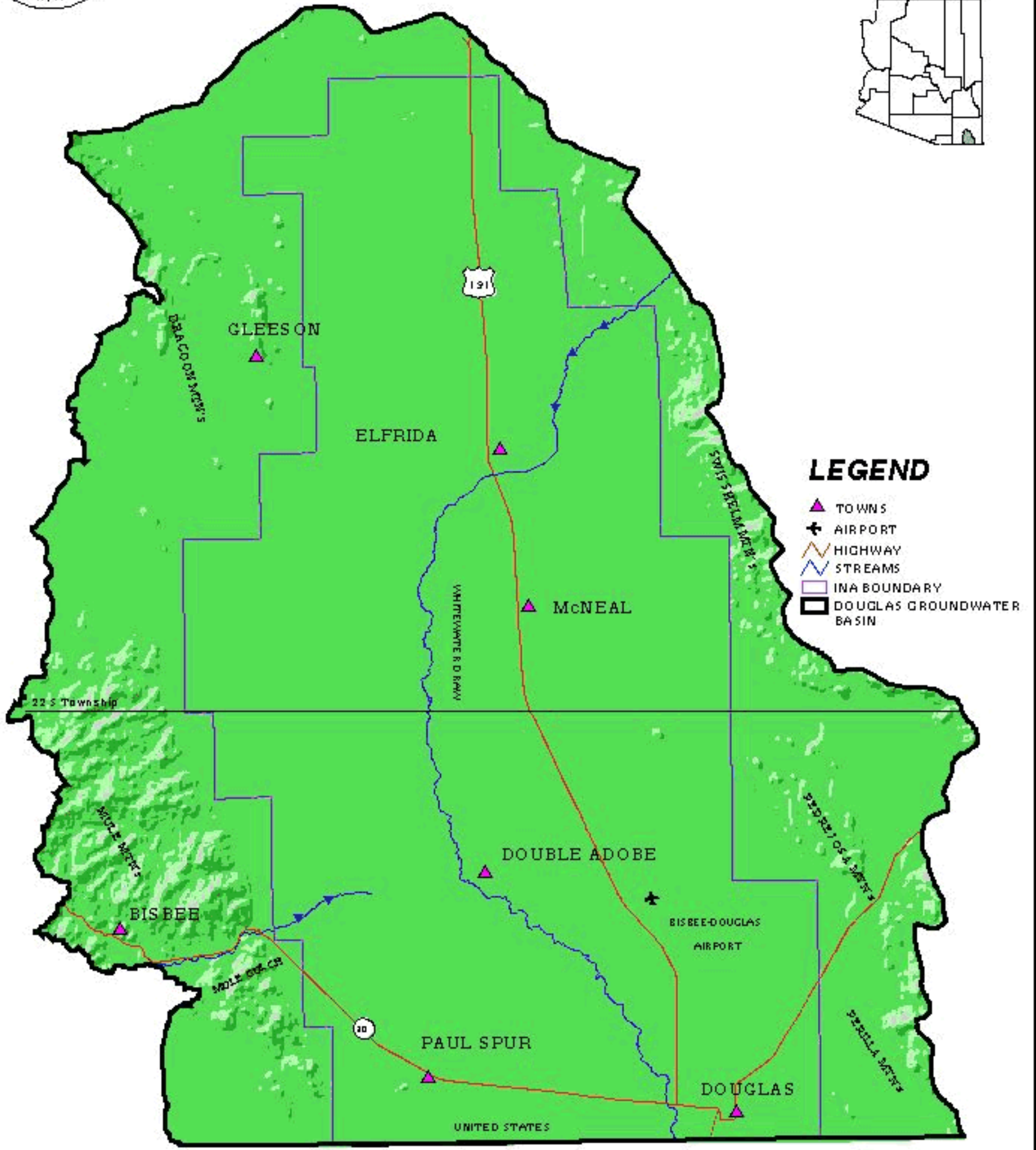
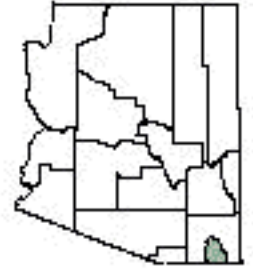




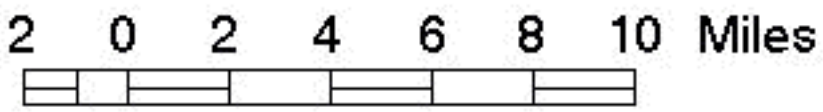
# Figure 1. Douglas Groundwater Basin Study Area



### LEGEND

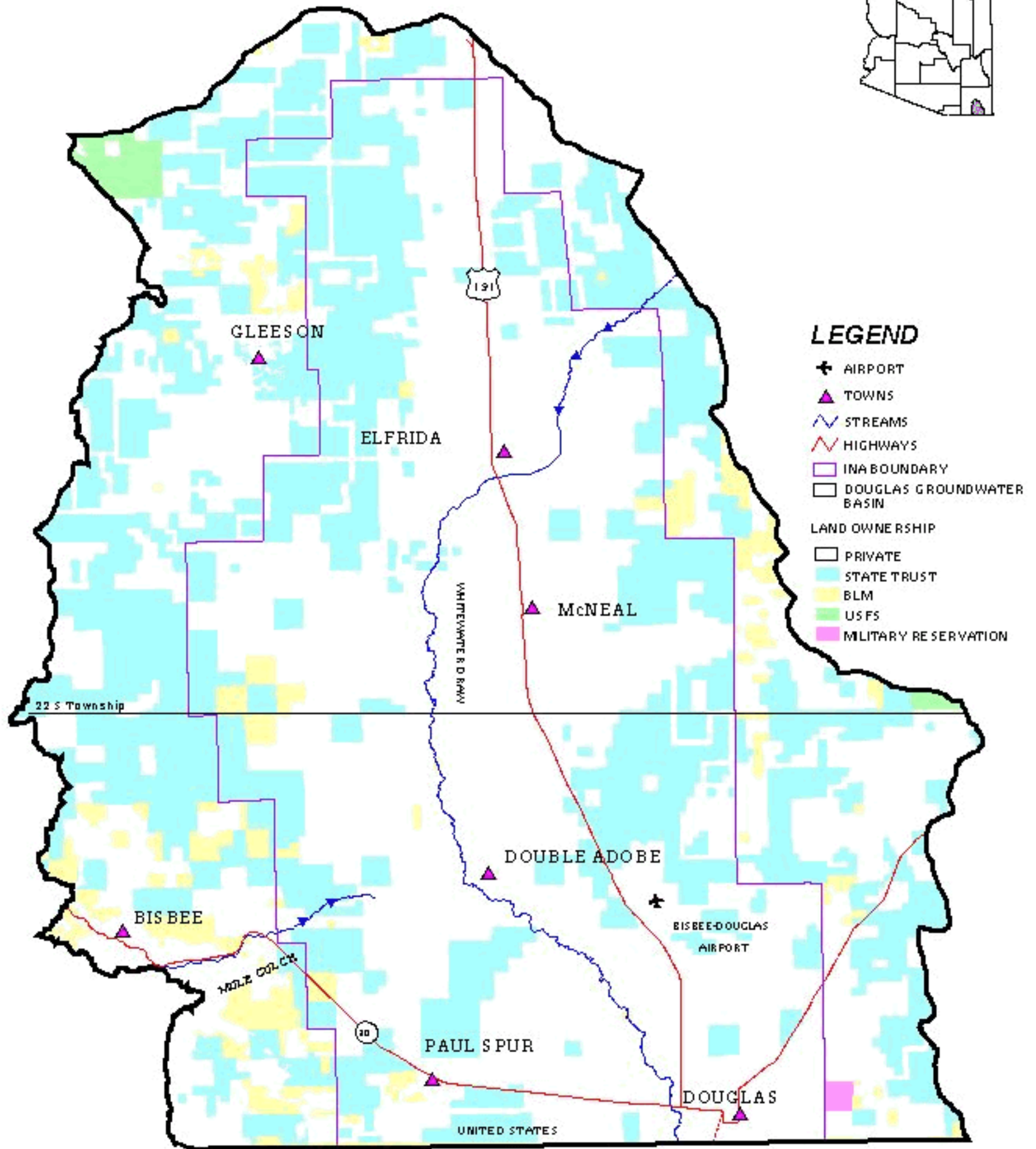
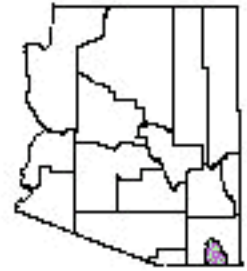
- ▲ TOWNS
- ★ AIRPORT
- HIGHWAY
- STREAMS
- INA BOUNDARY
- ▭ DOUGLAS GROUNDWATER BASIN

▲ AGUA PRIETA





# Figure 2. Douglas Groundwater Basin Land Ownership



### LEGEND

- AIRPORT
- TOWNS
- STREAMS
- HIGHWAYS
- INA BOUNDARY
- DOUGLAS GROUNDWATER BASIN
- LAND OWNERSHIP
  - PRIVATE
  - STATE TRUST
  - BLM
  - USFS
  - MILITARY RESERVATION

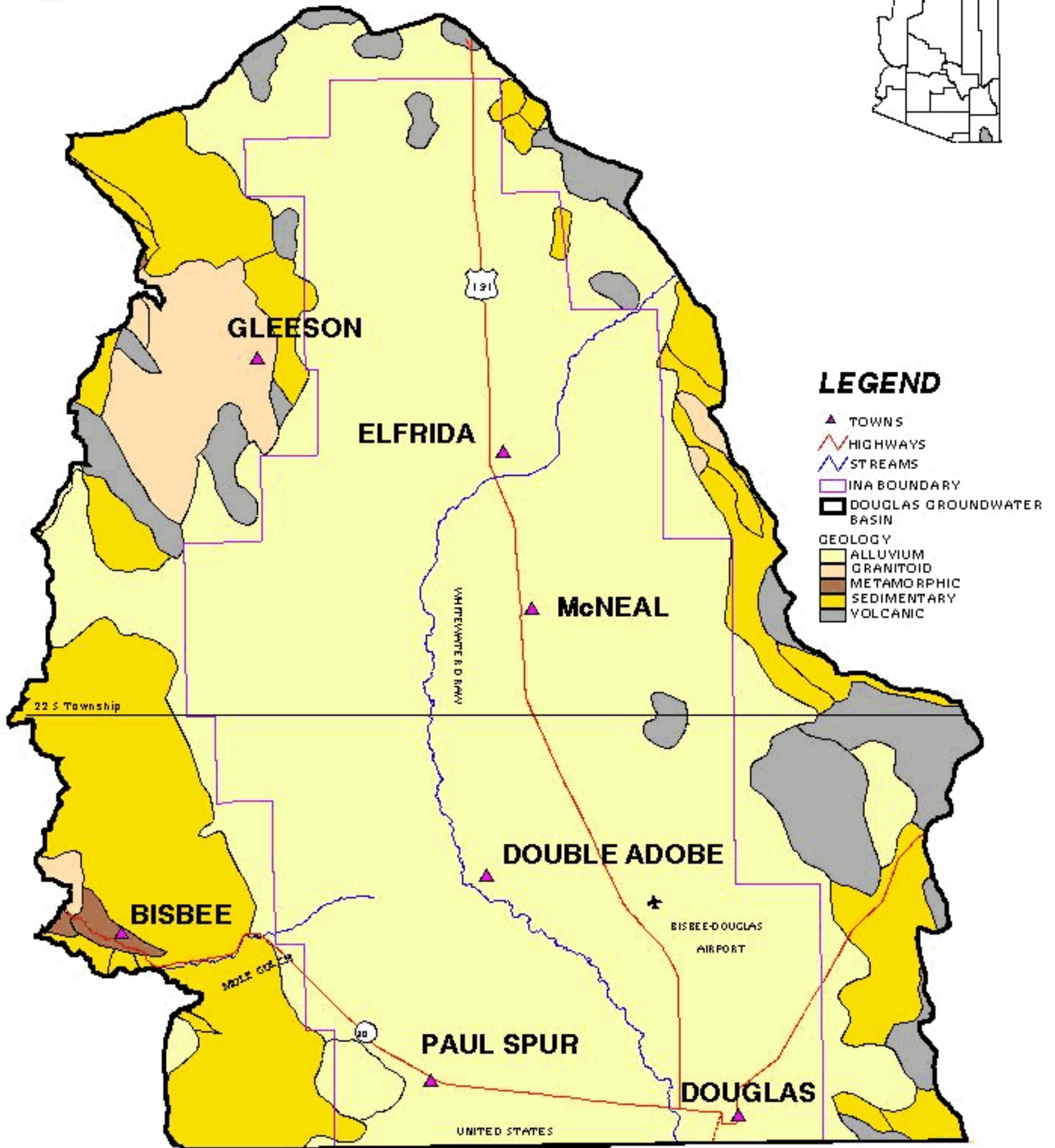
▲ AGUA PRIETA

2 0 2 4 6 8 10 Miles





# Figure 3. Douglas Groundwater Basin Geology

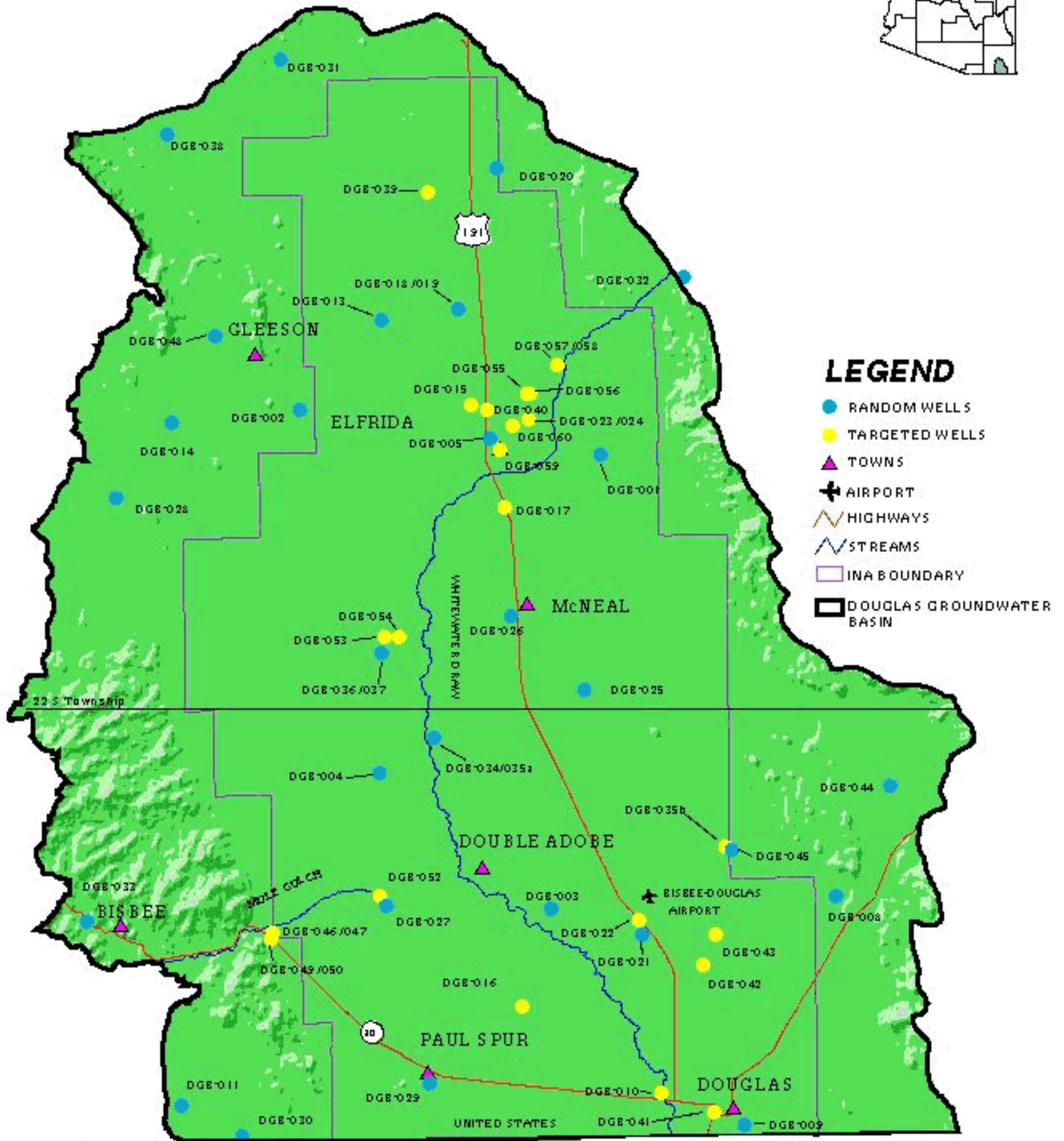
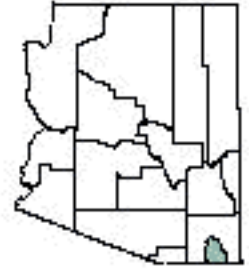


▲ AGUA PRIETA





# Figure 4. Location of Douglas Groundwater Basin Wells Sampled by ADEQ



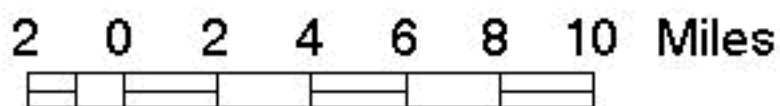
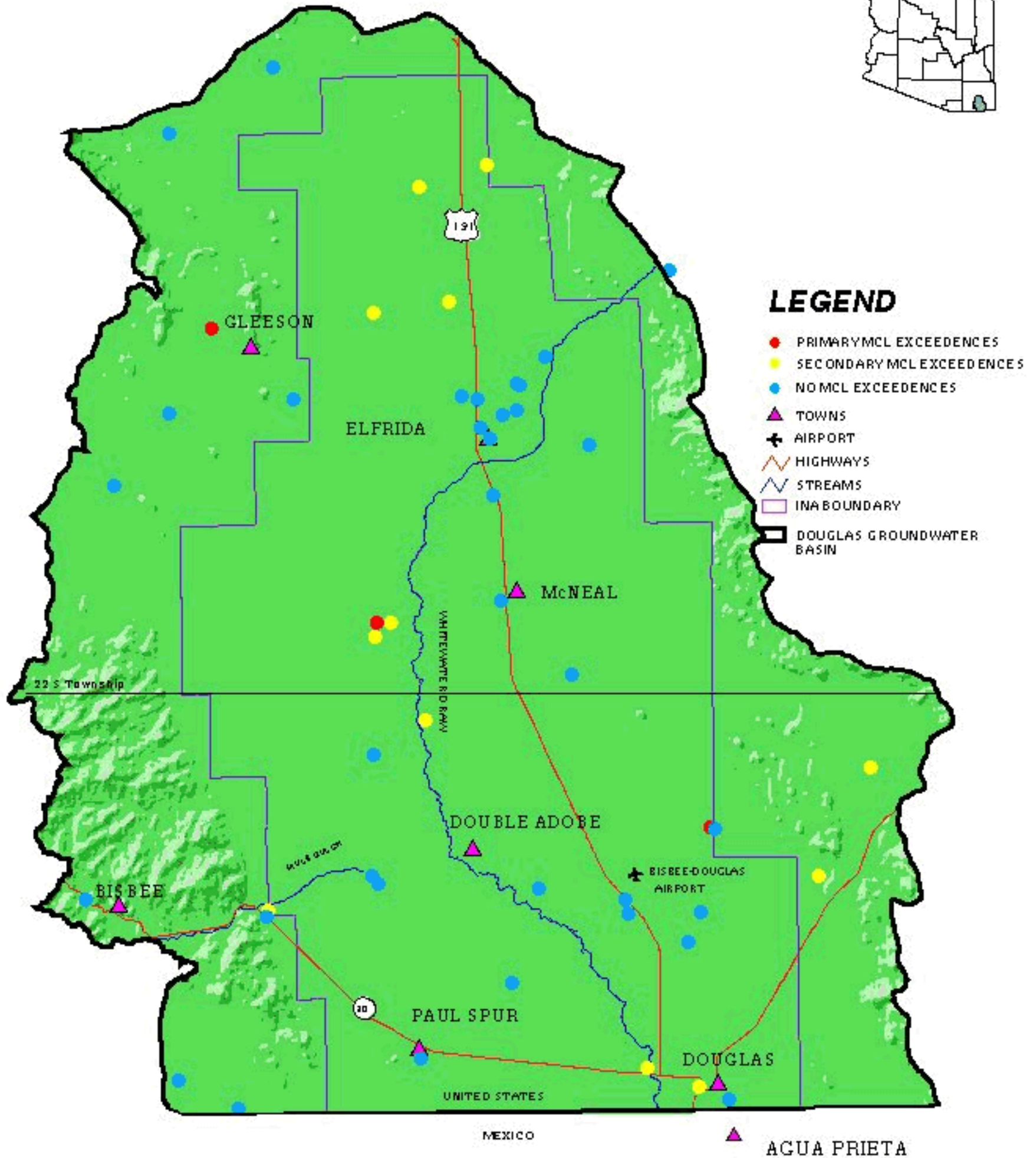
2 0 2 4 6 8 10 Miles

▲ AGUA PRIETA



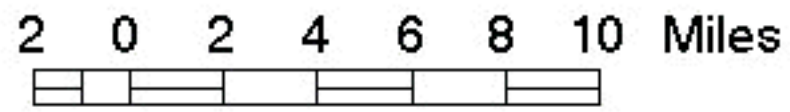
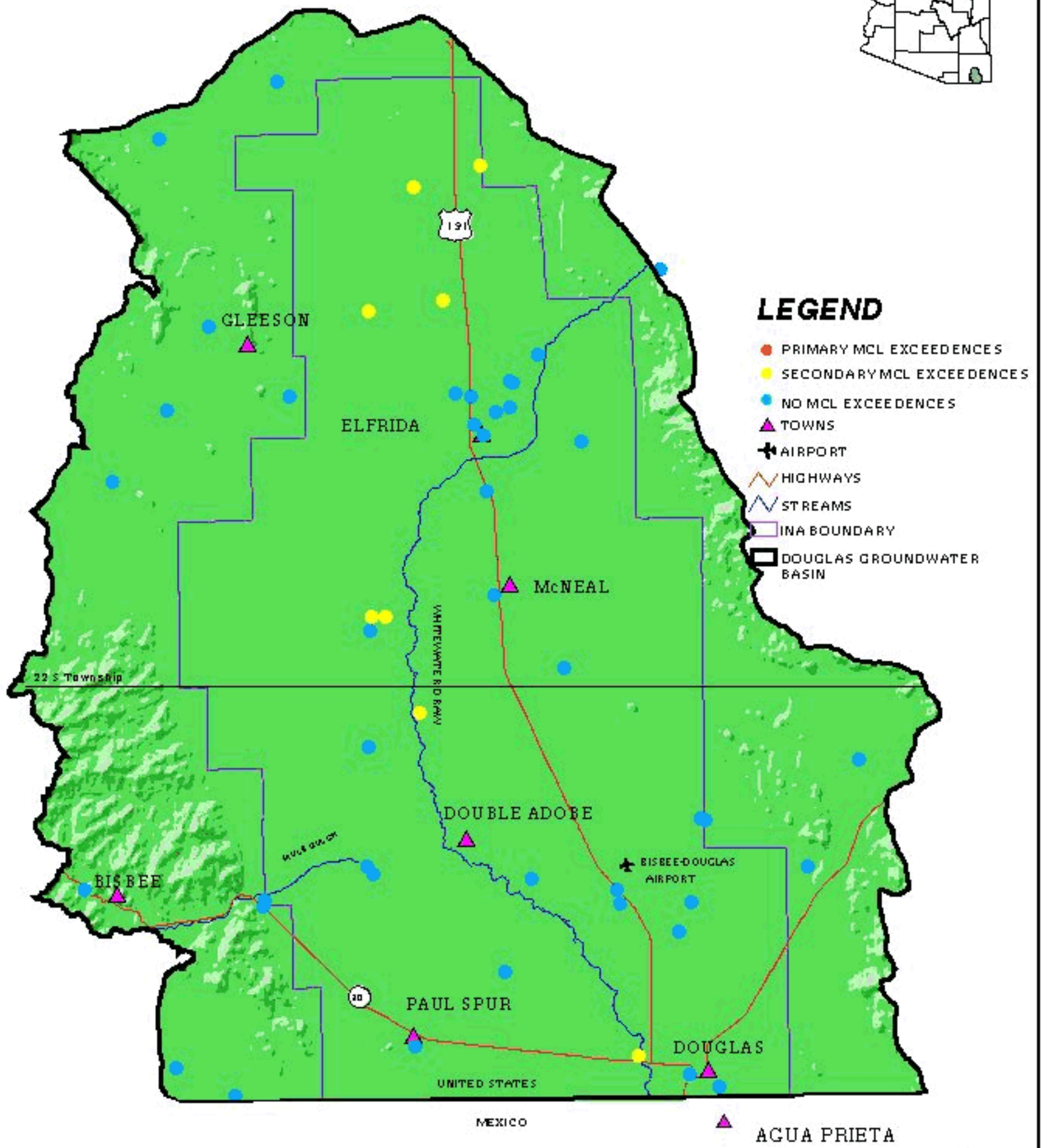
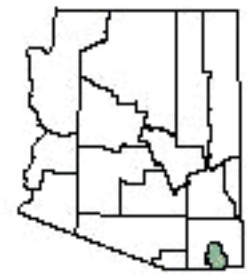


# Figure 7. Douglas Groundwater Basin Wells with MCL Exceedences



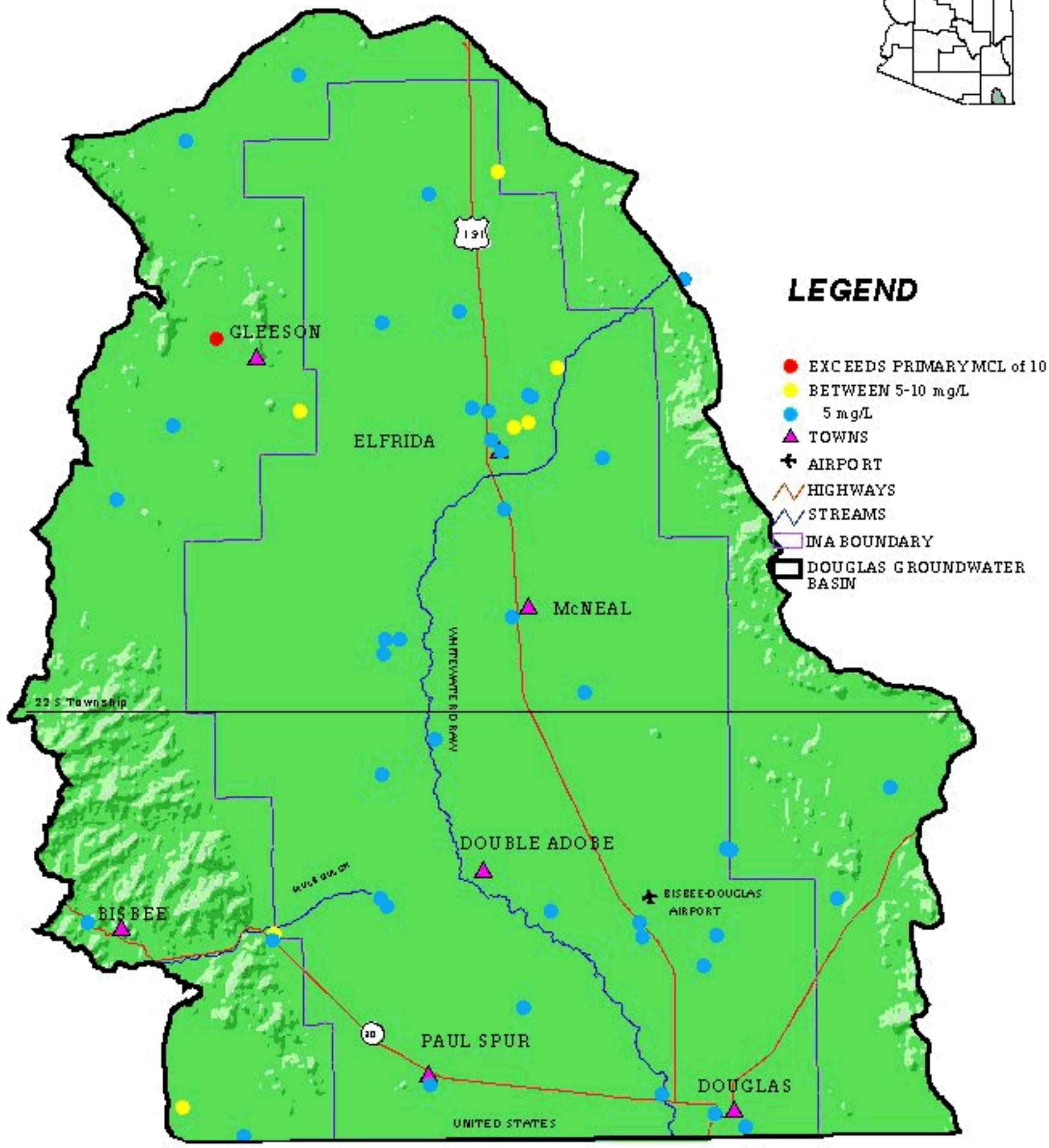


# Figure 9. Levels of Fluoride in Douglas Groundwater Basin Wells



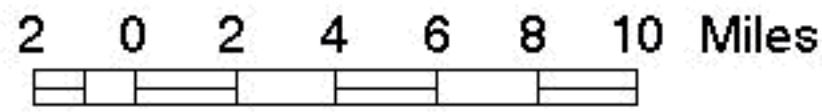


# Figure 10. Levels of Nitrate in Douglas Groundwater Basin Wells



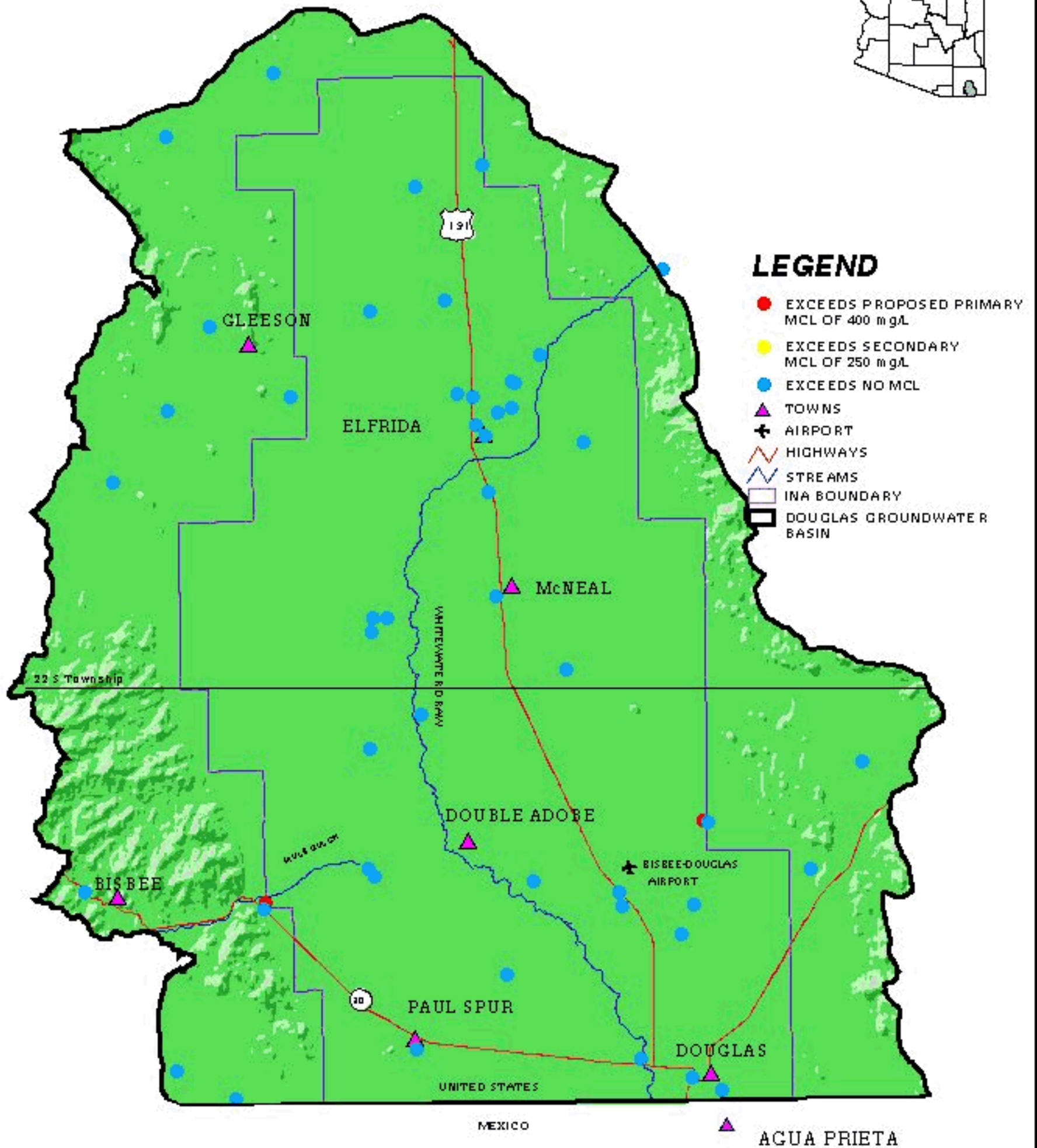
### LEGEND

- EXCEEDS PRIMARY MCL of 10
- BETWEEN 5-10 mg/L
- 5 mg/L
- ▲ TOWNS
- ✕ AIRPORT
- HIGHWAYS
- STREAMS
- IWA BOUNDARY
- DOUGLAS GROUNDWATER BASIN





# Figure 12. Levels of Sulfate in Douglas Groundwater Basin Wells



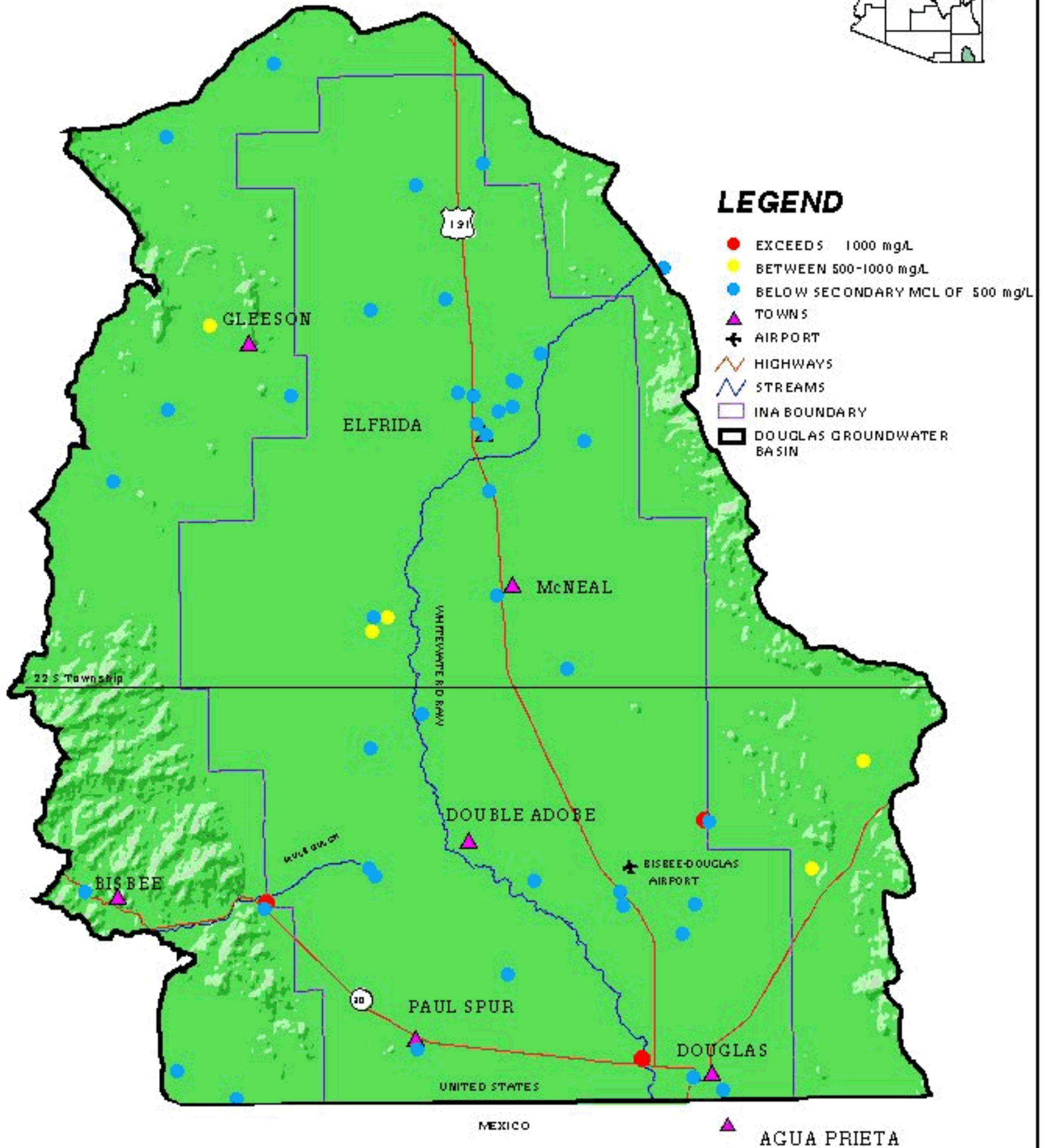
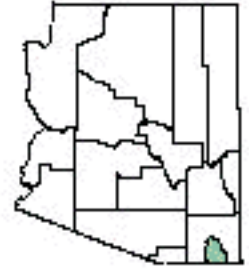
2 0 2 4 6 8 10 Miles







# Figure 13. Levels of TDS in Douglas Groundwater Basin Wells

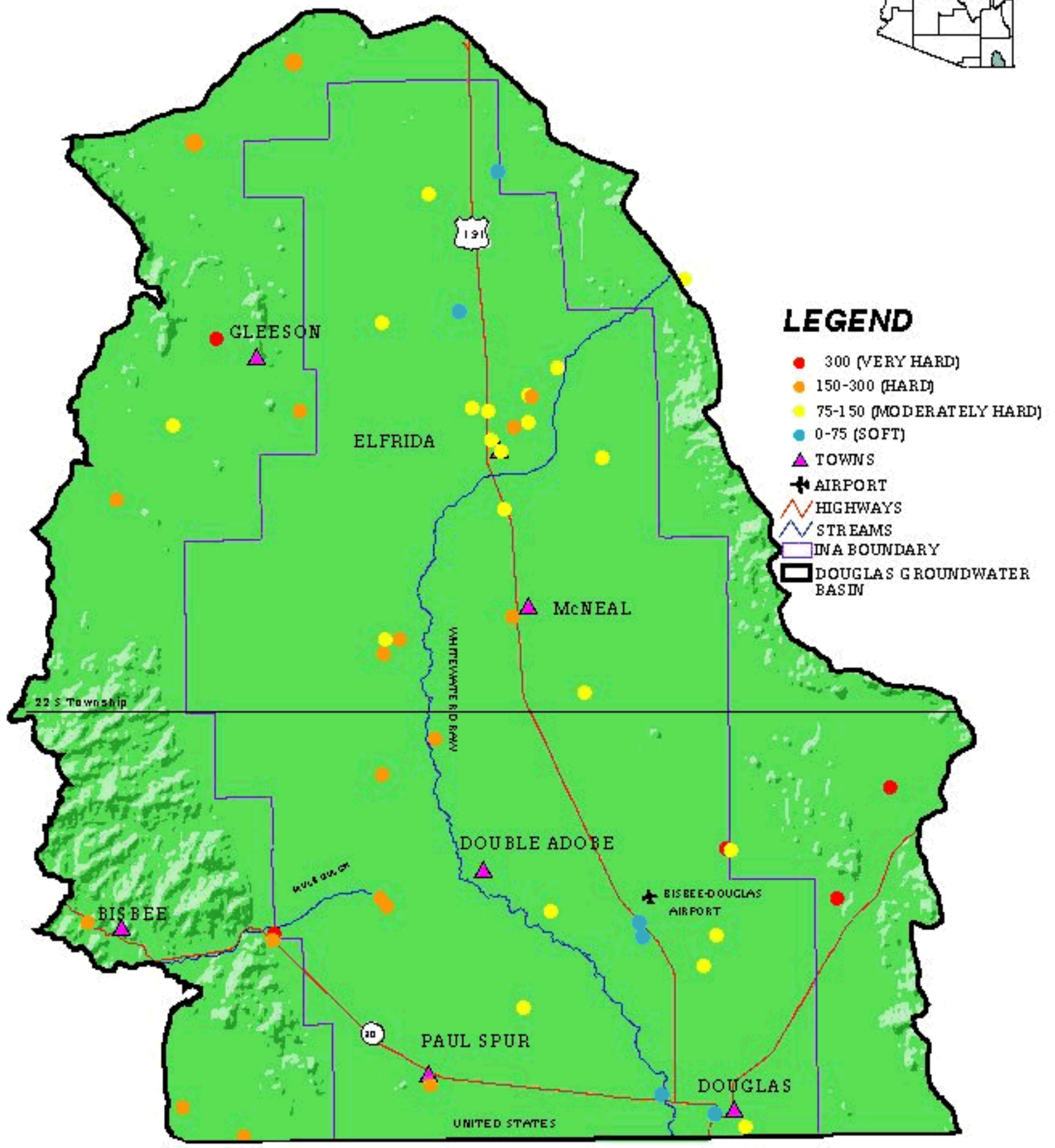
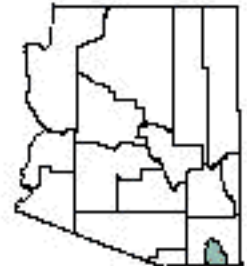


2 0 2 4 6 8 10 Miles

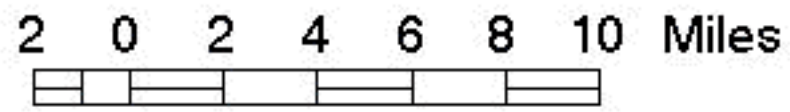




# Figure 15. Levels of Hardness in Douglas Groundwater Basin Wells

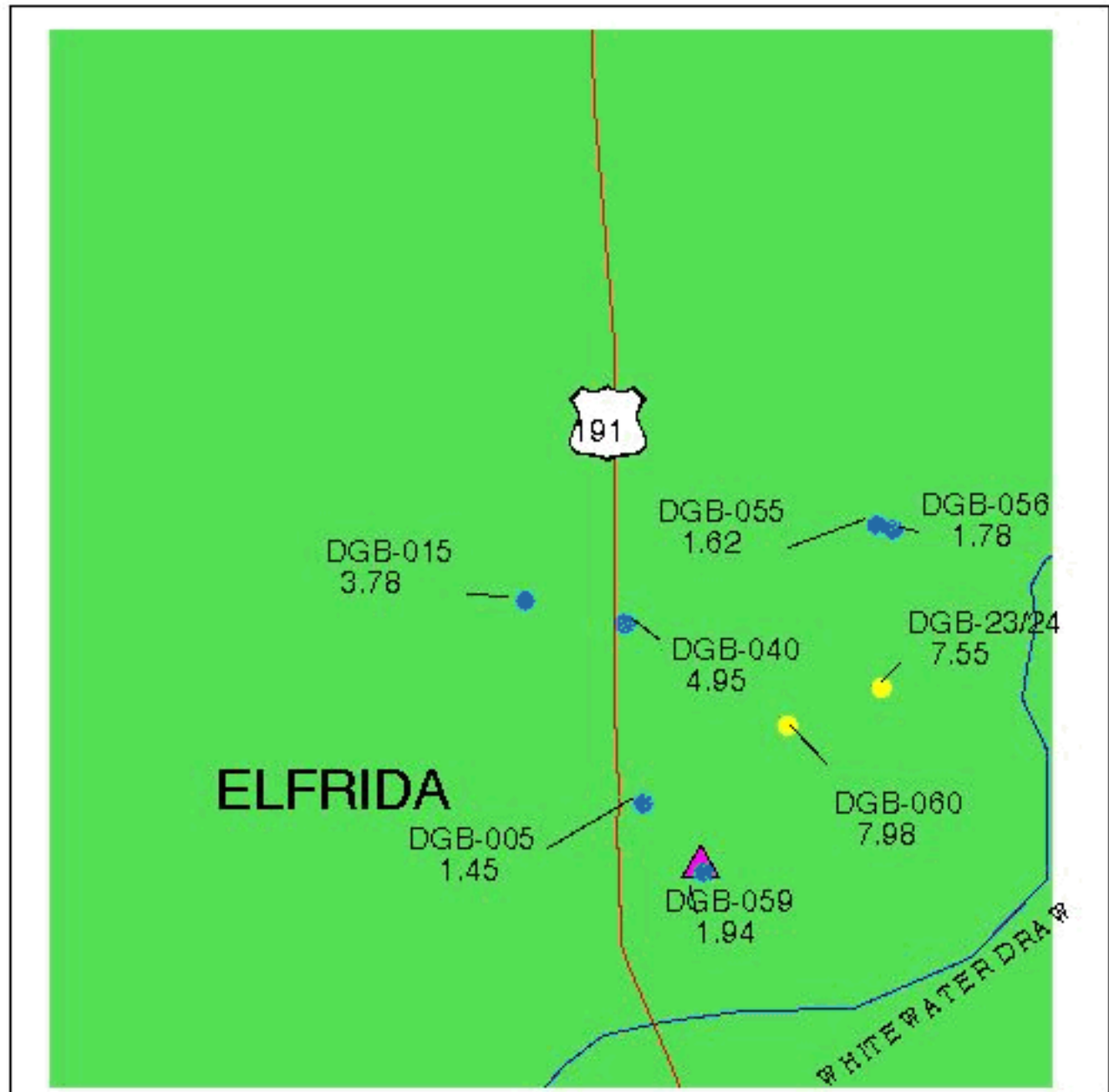


- LEGEND**
- 300 (VERY HARD)
  - 150-300 (HARD)
  - 75-150 (MODERATELY HARD)
  - 0-75 (SOFT)
  - ▲ TOWNS
  - ✈ AIRPORT
  - HIGHWAYS
  - STREAMS
  - IWA BOUNDARY
  - DOUGLAS GROUNDWATER BASIN



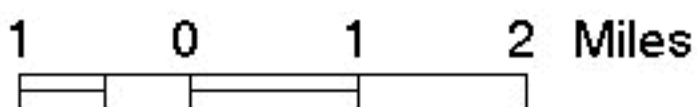


# Figure 16. Nitrate Levels Near the Town of Elfrida



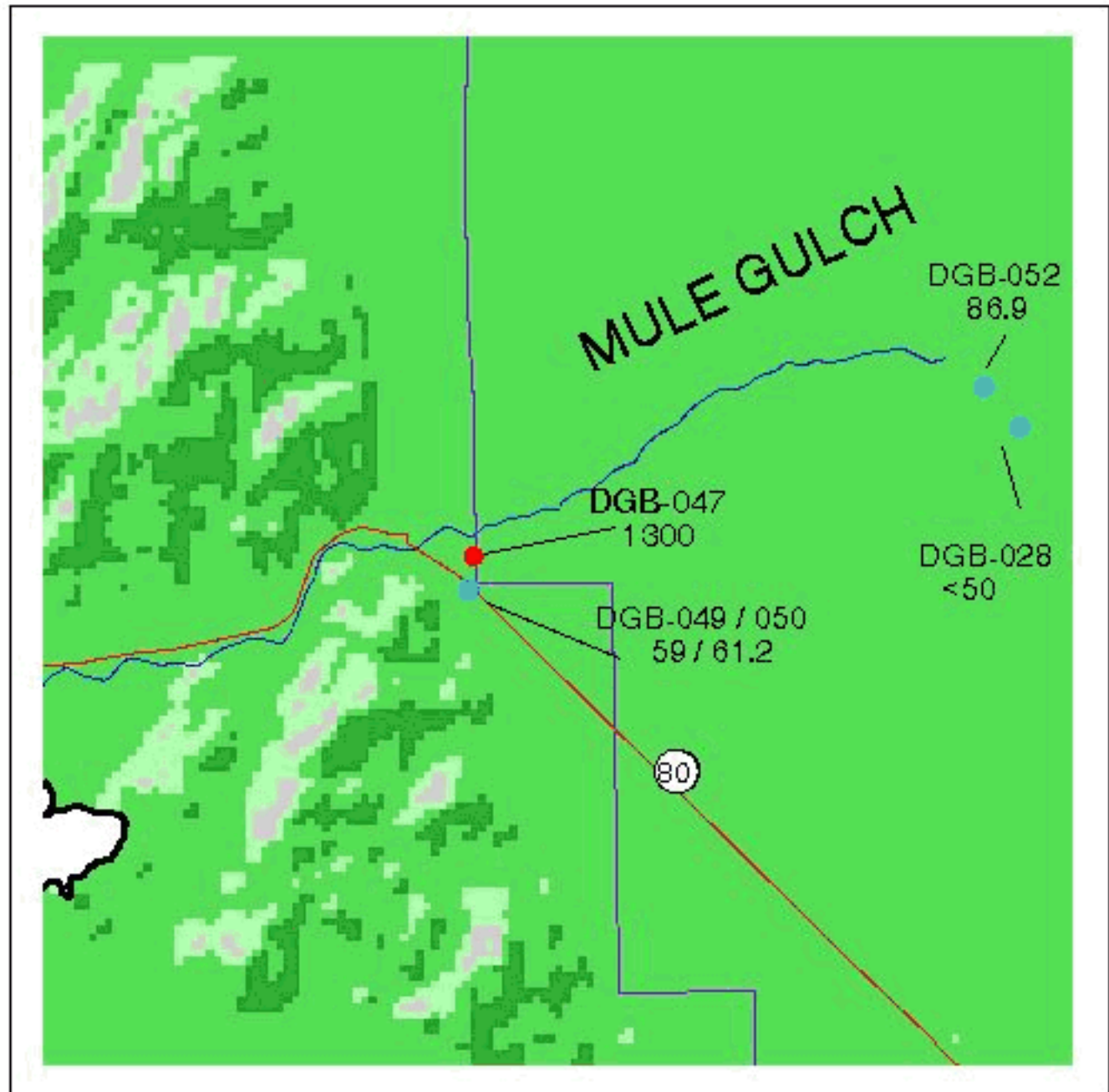
### LEGEND

- EXCEEDS PRIMARY MCL of 10
- BETWEEN 5-10 mg/L
- 5 mg/L
- ▲ TOWNS
- HIGHWAYS
- STREAMS



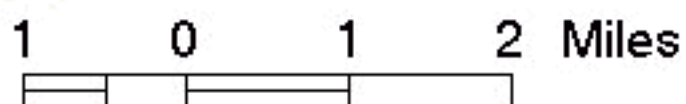


# Figure 17. Sulfate Levels Near Mule Gulch



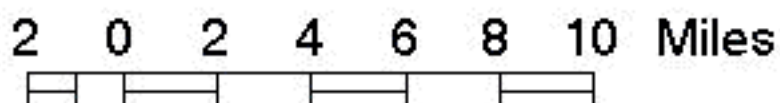
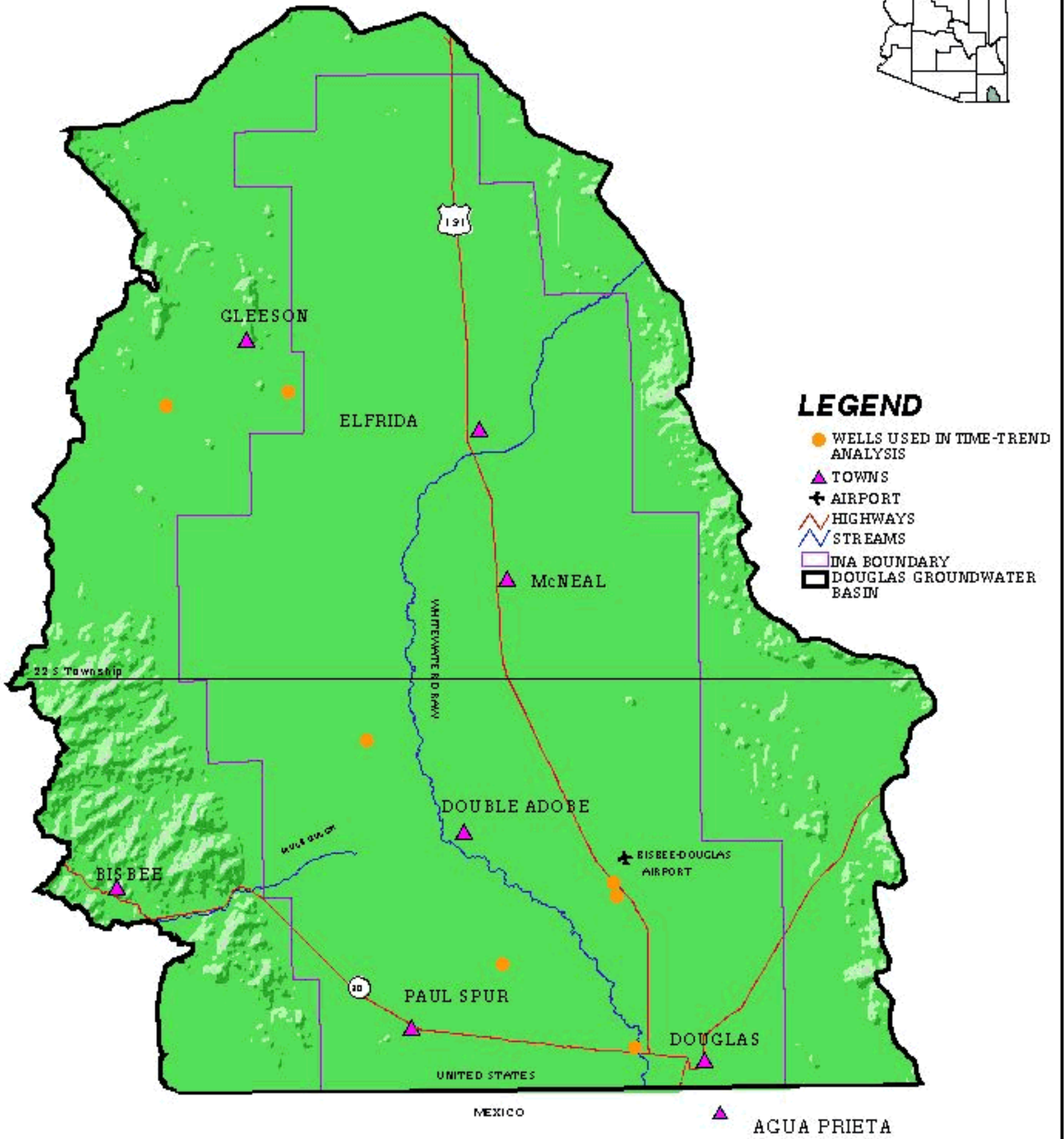
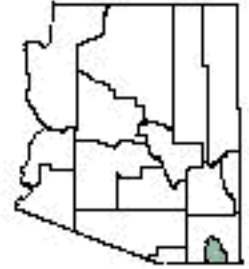
## LEGEND

- EXCEEDS PROPOSED PRIMARY MCL OF 400 mg/L
- EXCEEDS SECONDARY MCL OF 250 mg/L
- EXCEEDS NO MCL
- ▲ TOWNS
- HIGHWAYS
- STREAMS





# Figure 19. Location of Wells Used in the Time-Trend Analysis





# Figure 21. Index Wells Selected for Ambient Monitoring Network

