



MONTHLY AIR QUALITY REPORT FOR
FEBRUARY 2010

AOI COLOR SCALE

GOOD	MODERATE	UNHEALTHY FOR SENSITIVE GROUPS	UNHEALTHY
0-50	51-100	101-150	151-200

Calendar of maximum AQI values & their corresponding color for February 2010*

*Preliminary data

SAMPLE POLLUTANT REPORTING BOX

1 (day of month)	O3	CO
	PM10	PM2.5

	SUN	MON	TUES	WED	THU	FRI	SAT
		1	36 15 33 51	2	34 17 38 39	3	32 15 32 35
7	37 07 09 16	8	36 14 26 32	9	37 13 27 30	10	35 13 28 31
14	37 17 24 47	15	42 19 40 39	16	40 17 43 37	17	42 16 50 47
21	36 07 09 19	22	40 07 12 17	23	39 09 25 31	24	37 10 22 33
28	31 07 08 19						

Calendar of High Pollution Advisories and Health Watches issued during February 2010

	SUN	MON	TUE	WED	THU	FRI	SAT
		1	2	3	4	5	6
7	8	9	10	11	12	13	
14	15	16	17	18	19	20	
21	22	23	24	25	26	27	
28							

LEGEND

HIGH POLLUTION ADVISORIES

- A** = PM-10 High Pollution Advisory
- B** = PM-2.5 High Pollution Advisory
- C** = Ozone High Pollution Advisory

HEALTH WATCHES

- D** = PM-10 Health Watch
- E** = PM-2.5 Health Watch
- F** = Ozone Health Watch

Calendar of Meteorological Conditions observed in Metro Phoenix during February 2010

	SUN	MON	TUE	WED	THU	FRI	SAT
		1	2	3	4	5	6
7	A B C	E		B			B
8		E		B	C		
9			E			E C	
10							B
11							
12							B C
13							
14							
15							
16							
17							
18							
19							
20							
21		A B C					B C
22							
23							
24							
25							
26							
27							
28	A B C						

LEGEND

ELECTROMETEORS

- A** = Thunderstorm

HYDROMETEORS

- B** = Rain/Drizzle/Hail/Snow
- C** = Fog

LITHOMETEORS

- D** = Blowing Dust
- E** = Haze (vsby <10SM)
- F** = Smoke

Exceedance days during FEB 2010-

Total= 0 Date Max AQI Pollutant Site/s

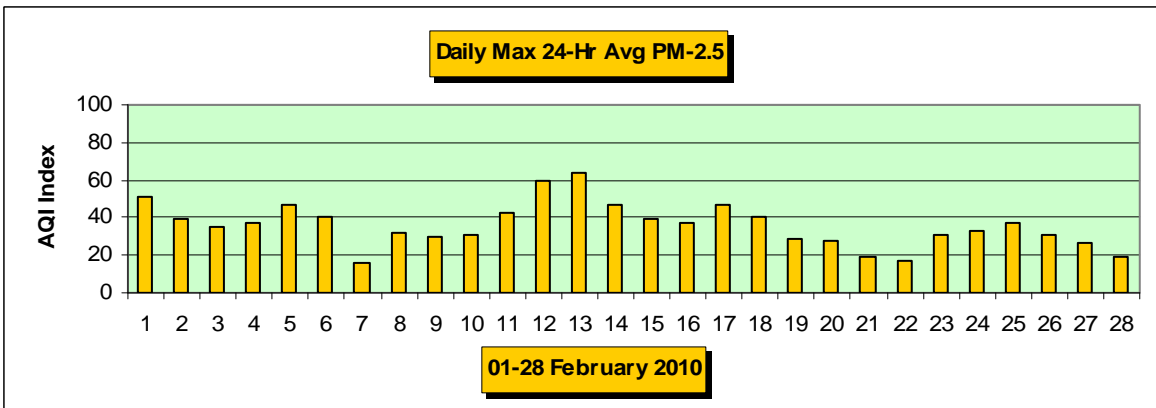
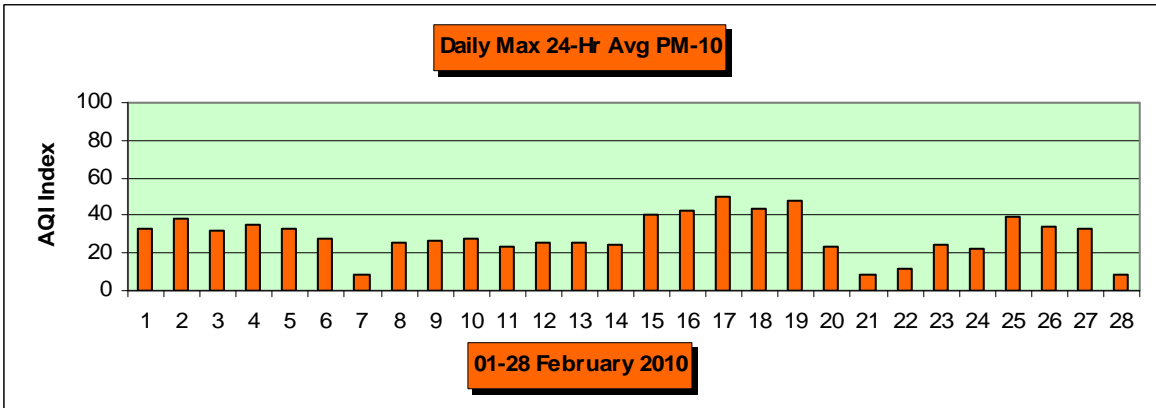
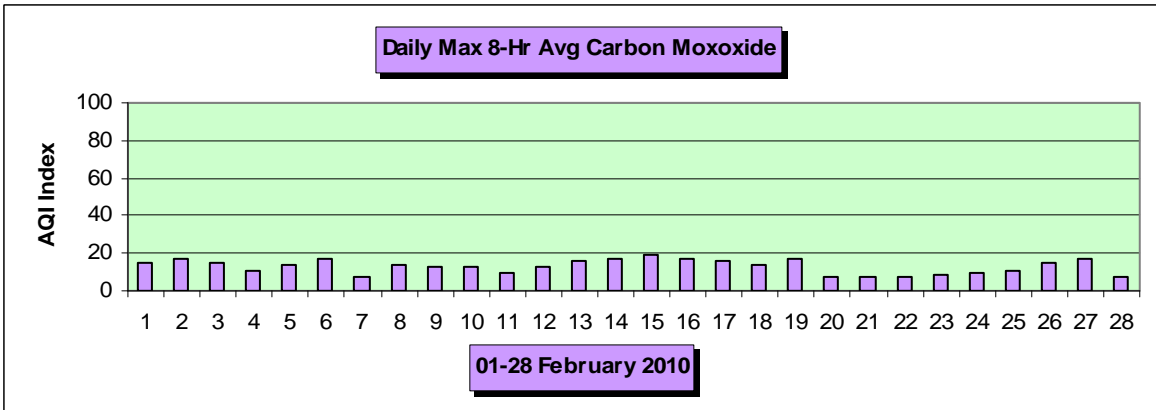
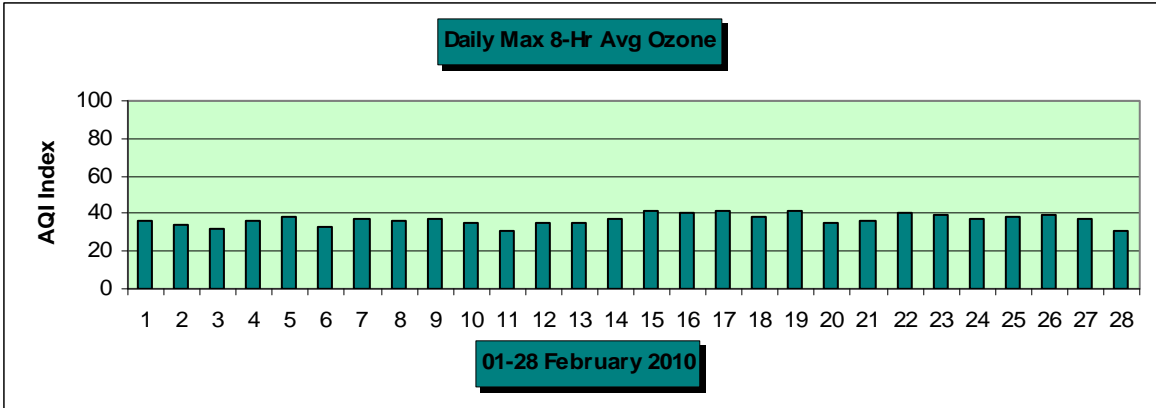
Health Watches issued during FEB 2010-

Total= 0 Date Max AQI Pollutant Site/s

High Pollution Advisories issued during FEB 2010-

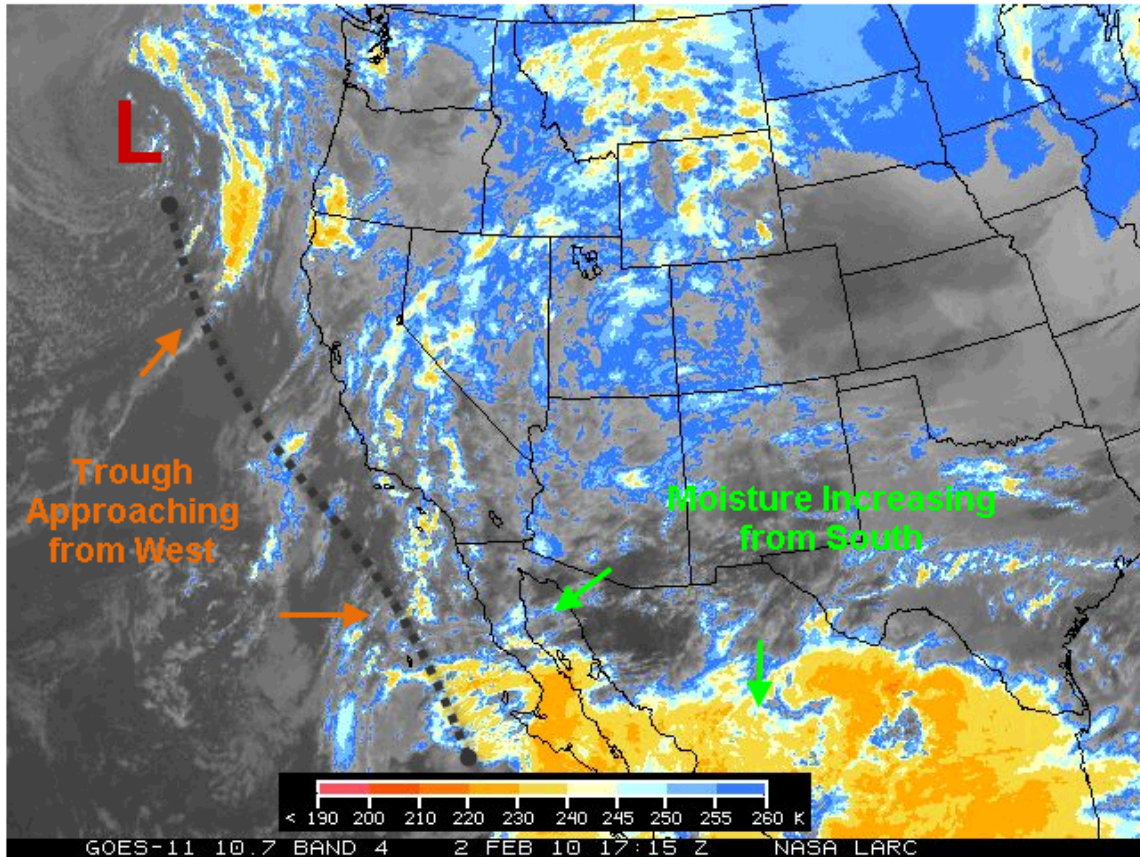
Total= 0 Date Max AQI Pollutant Site/s

Concentration Recap: Days in the **Good** category: 25
Days in the **Moderate** category: 3
Days in the **Unhealthy for Sensitive Groups** category: 0
Days in the **Unhealthy** category: 0
Total Forecast Days: 28



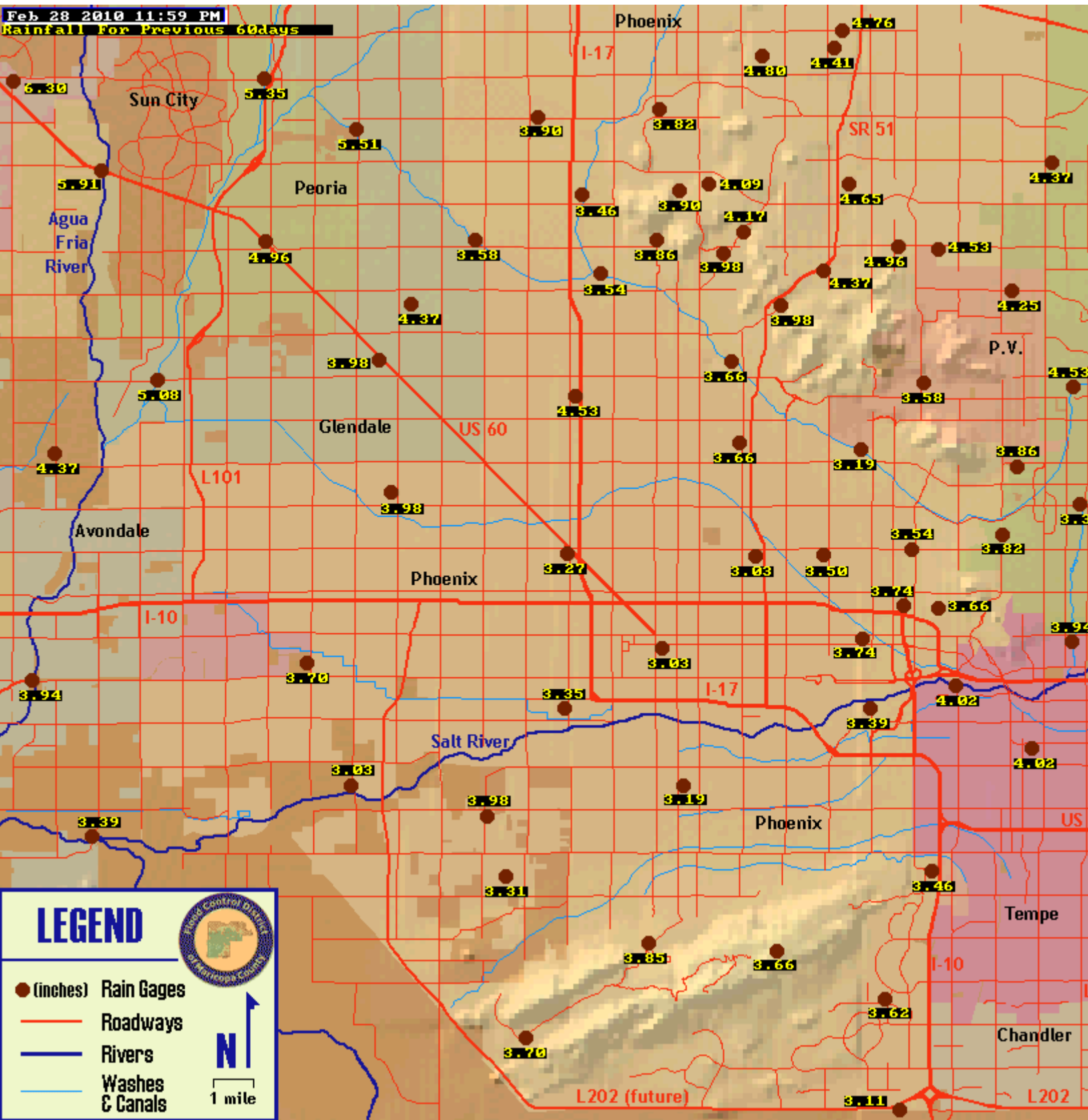
Narrative:

Valley air quality during the month of February 2010 was nothing short of spectacular. This was in large part due to the continuing presence of a moderate to strong El Nino pattern that was responsible for a very active storm track over the southwest U.S. No less than six upper level trough and frontal passages occurred during the month and all were precipitation producers for the metro area. The graphic below illustrates the synoptic situation on February 2 that culminated in a light rainfall episode on the 3rd. This pattern was typical for many of the February weather systems.

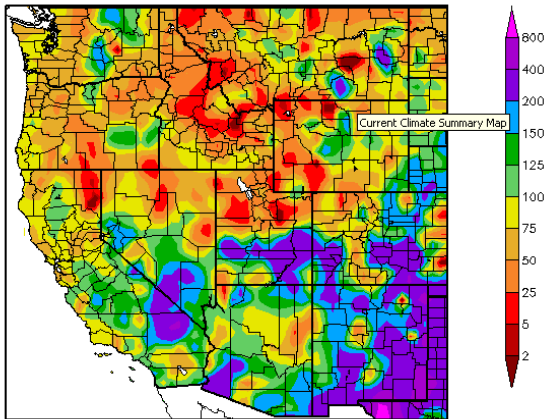


These periodic rainfall events helped keep local PM-10 (coarse particle) levels in the good range of the Air Quality Index the entire month – something not seen for many years. In fact, the moderate range of the AQI was only reached on three days during the month and that by PM-2.5 (fine particles) on days characterized by a ridge aloft, less than favorable dispersion, and mostly light or calm winds. The following graphics further illustrate the extent of rainfall over the Phoenix area since the first of the year and for the entire region during the month of February. -Reith

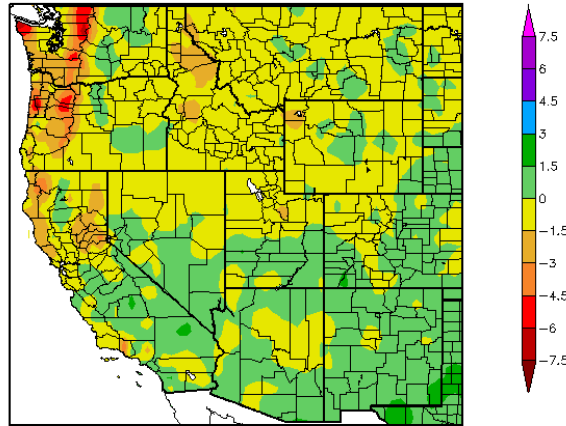
Feb 28 2010 11:59 PM
Rainfall For Previous 60days



Percent of Normal Precipitation (%)
2/1/2010 - 2/28/2010



Departure from Normal Precipitation (in)
2/1/2010 - 2/28/2010



Precipitation (in)
2/1/2010 - 2/28/2010

