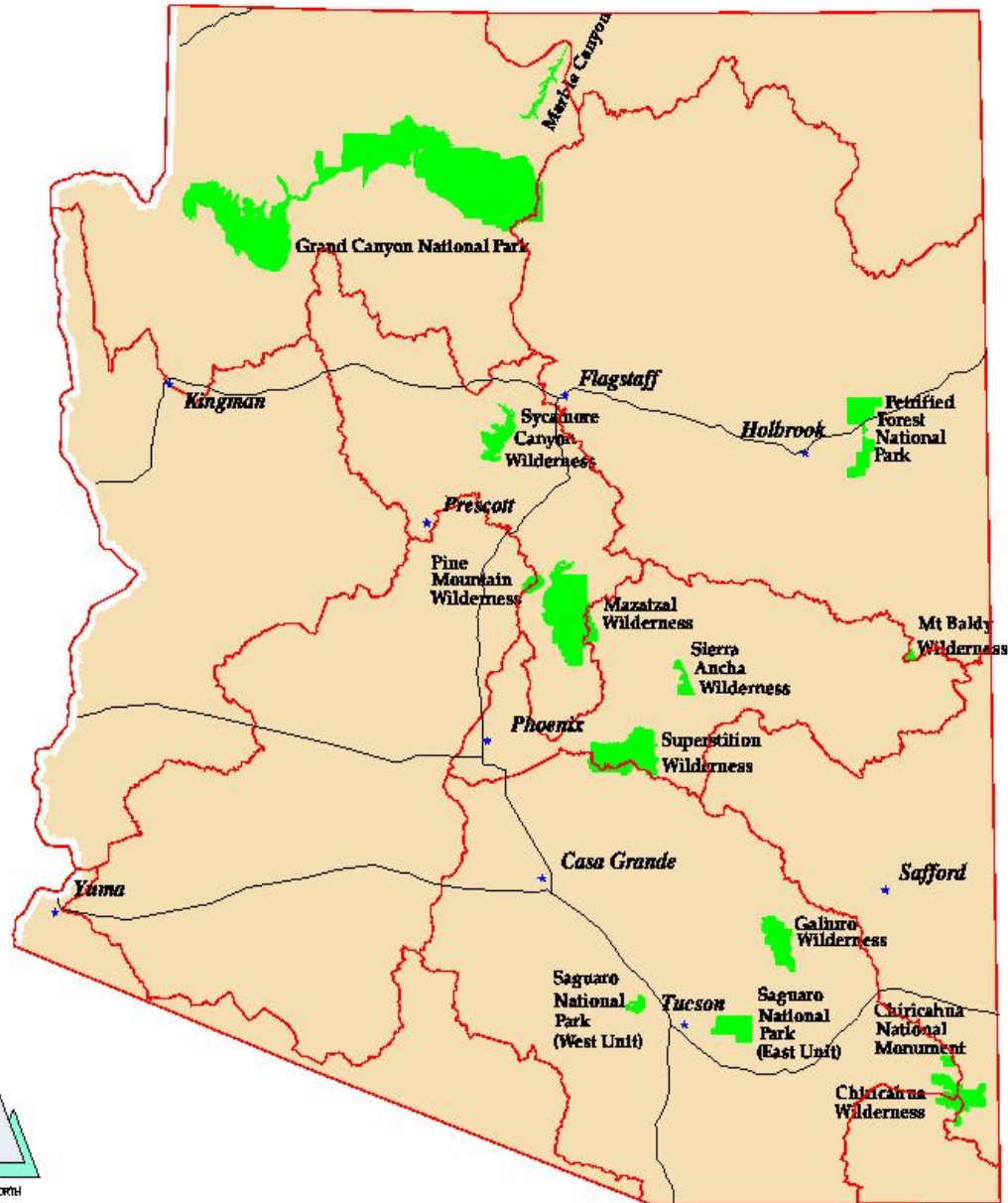


AIRSHEDS AND CLASS I AREAS



- Class I Areas
- Airshed Boundaries
- Major Freeways
- ★ Major Cities

For more information about this map contact:
 Air Quality Division, 1500 McDowell Blvd
 Arizona Department of Environmental Quality
 2001 North Central Avenue, Phoenix, Arizona 85004
 Phone: (602) 317-1900
 Fax: (602) 317-2956
 Email: air@azdeq.gov
 Website: www.azdeq.gov
 This map is a (UNCLASSIFIED) INFORMATION product developed for
 presentation and discussion and is subject to change
 and further refinement.

July 2000
 Author: TR Swanson, jef2@azdeq.gov

Under Section 162 of the Federal Clean Air Act, Class 1 Federal lands are granted special air quality protection. Class 1 Federal lands include areas such as national parks, national wilderness areas, and national monuments.

[Permits Home Page](#) || [Air Quality Permits Information Page](#) || [Who needs a permit?](#) || [Permit Classifications](#) || [Jurisdiction](#) || **Maps** - [Jurisdiction, Nonattainment Areas, Arizona Tribal Lands](#) | [Arizona Air Quality Regulations](#) || [Arizona Ambient Air Quality Guidelines](#) || [Criteria Air Pollutants](#) || [Policy and Guidelines](#) || [Fees worksheets](#) || [Maximum Time Frames to Issue Permits](#)