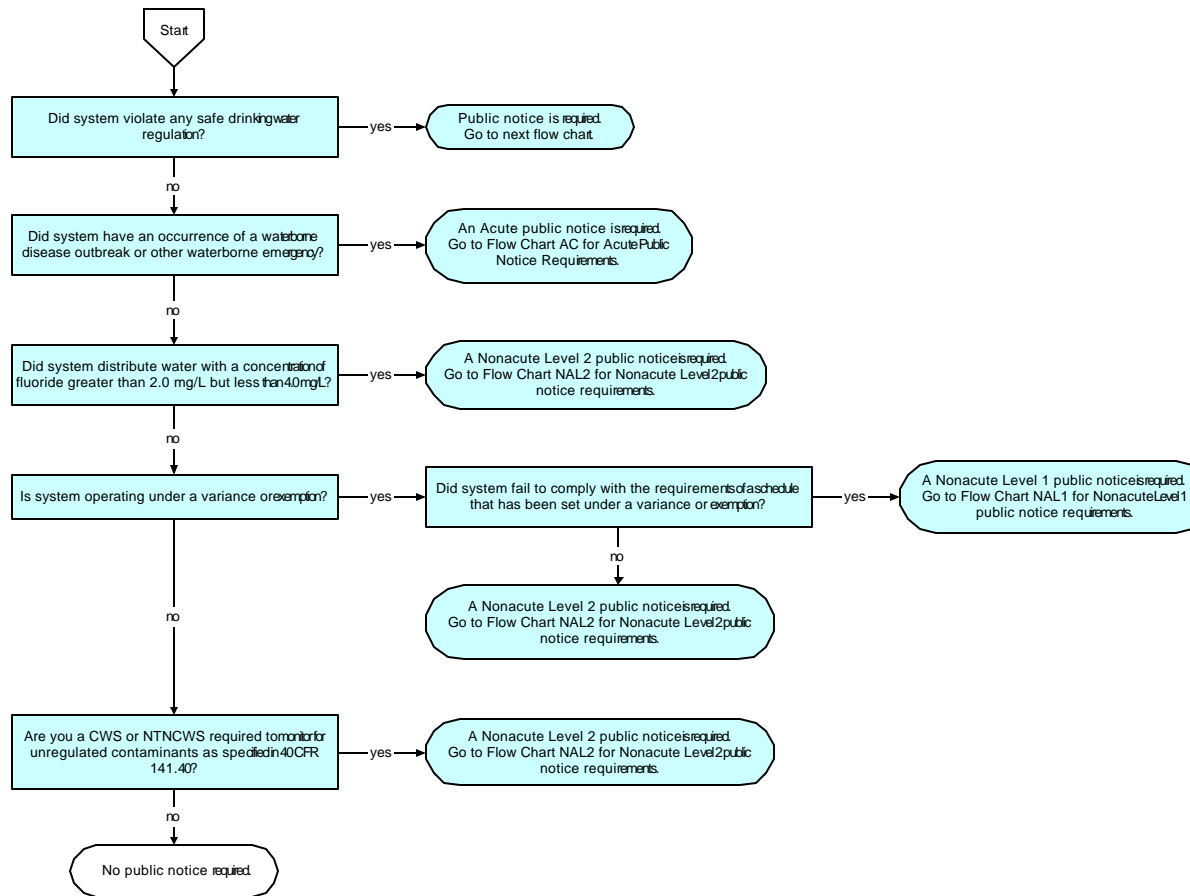


# Arizona Department of Environmental Quality

## Flow Chart for Determining Public Notice Requirements for All Public Water Systems R18-4-105

*This flow chart is for guidance purposes only. Refer to the Arizona Safe Drinking Water Rules for specific information.*

### Flow Chart A Determining Public Notice Applicability (R 18-4-105(A))



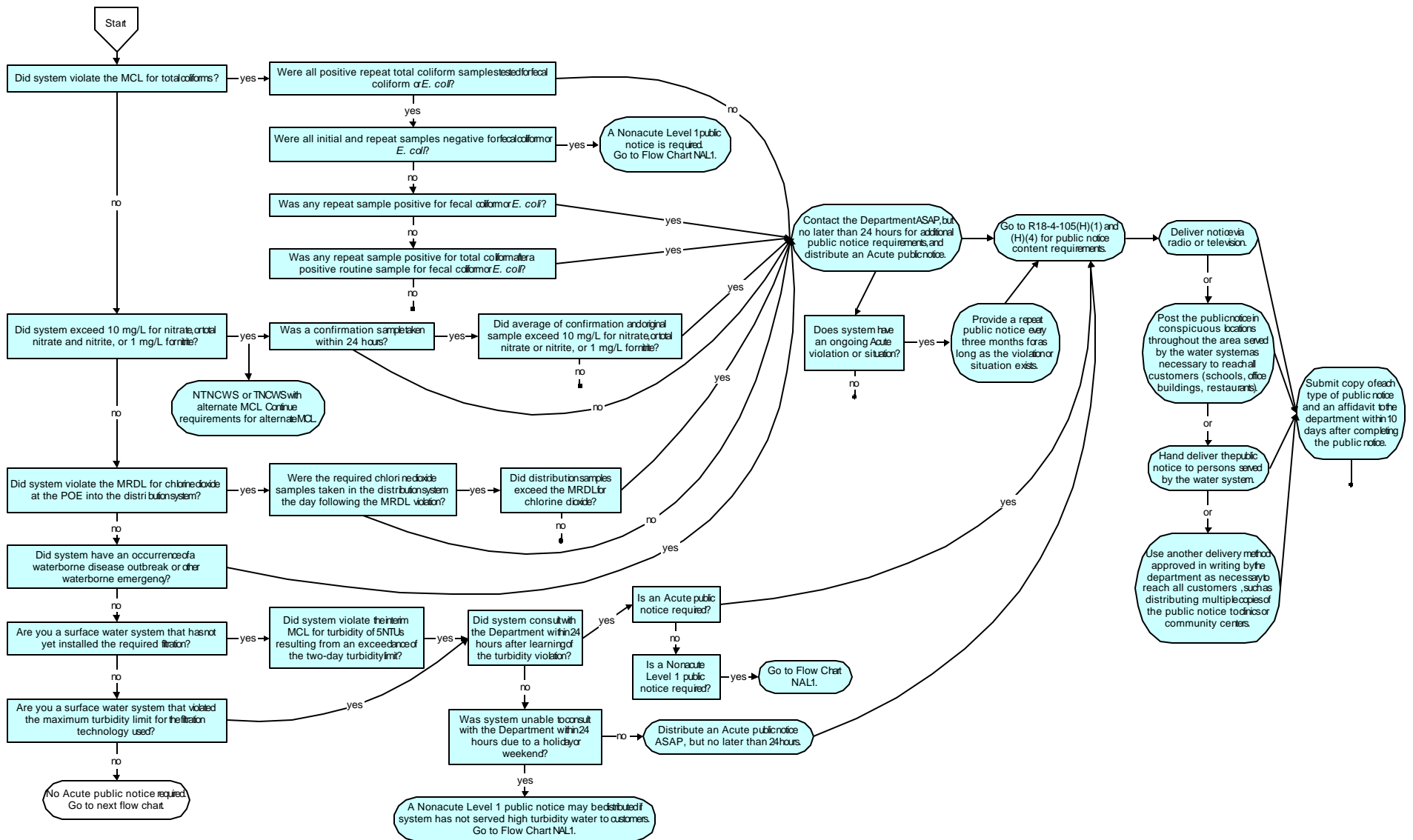
**Key**

CWS = Community Water System  
MCL = Maximum Contaminant Level  
MRDL = Maximum Residual Disinfectant Level  
NTNCWS = Nontransient Noncommunity Water System  
TNCWS = Transient Noncommunity Water System

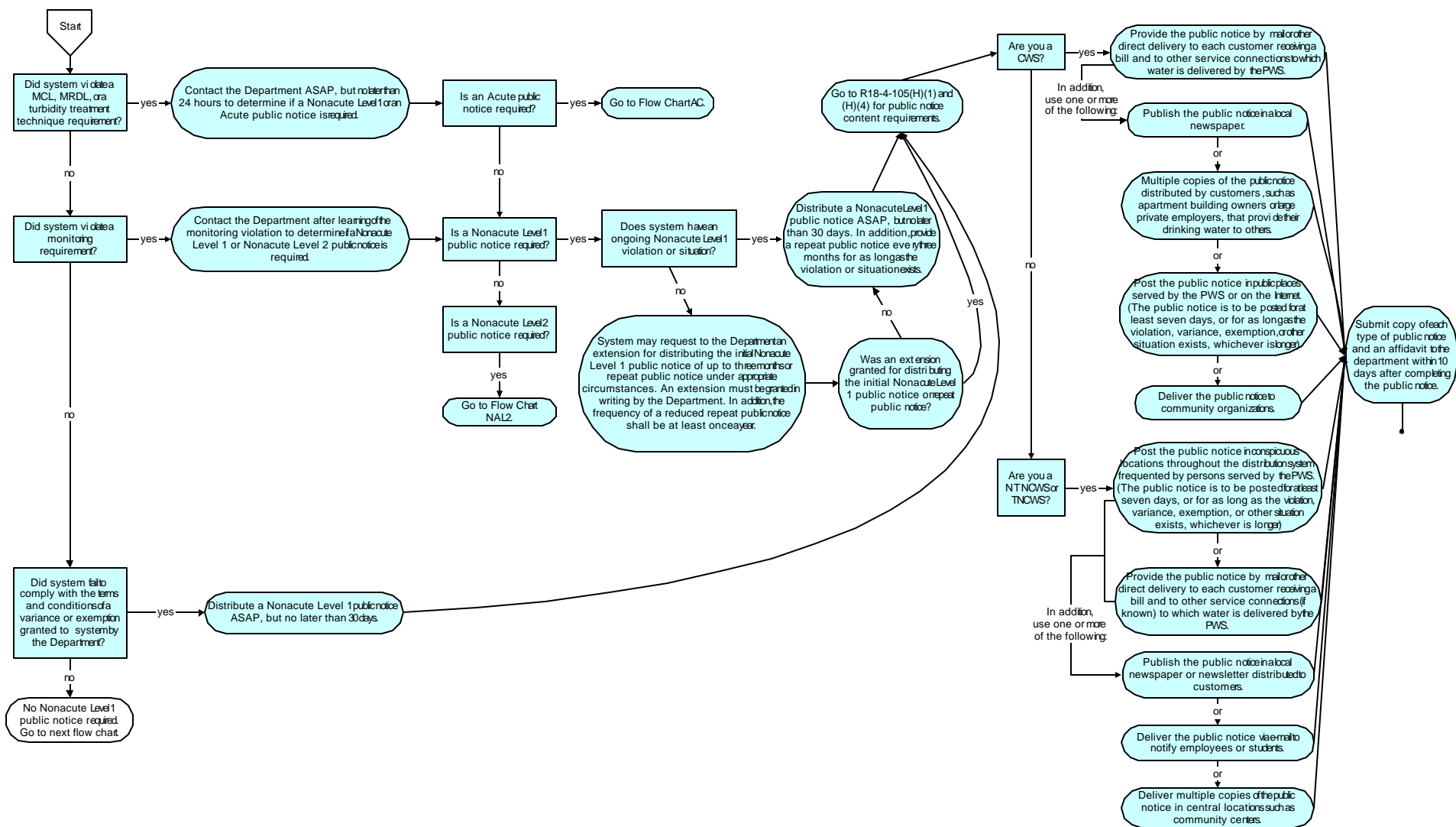
↓ = end of flow

Last updated 9/2002: ADEQWQDDWS

**Flow Chart AC**  
**Acute (24 Hour) Public Notice Requirements (R 18-4-105(D))**



## Flow Chart NAL1 Nonacute Level 1 (30 Day) Public Notice Requirements (R18-4-105(E))



## Flow Chart NAL2 Nonacute Level 2 (12 Month) Public Notice Requirements (R18-4-105(F))

